







KARRATHA ENTRY STATEMENT

DESIGN OPTION 3

Clusters of transplanted Milstream palms (*Livingstonia affinis*) located directly across the road to the main entrance (near Shire Aid Gardens). Underplanting within this area to comprise of a mix of native grasses such as Tamil Grass (*Chrysopogon elongatus*).

LEGEND	
1	 <p>POSSIBLE TRANSPLANTING OF 12 SEMI-MATURE SPECIMENS OF THE LOCALISED DATE PALM (<i>PHOENIX DACTYLIFERA</i>). FOUR GROUPS IN TOTAL, MADE UP OF THREE PALMS EACH (TWO CLUSTERS TO EITHER SIDE OF THE ROAD). THIS PLANTING WOULD GIVE AN INSTANT LEVEL OF MATURITY TO THE SITE, UNDERPLANTING TO THE PALMS WOULD CONSIST OF A MIX OF NATIVE GRASSES.</p>
2	 <p>THREE CLUSTERS OF THREE PALMS EACH, TWO TO EITHER SIDE OF THE ENTRANCE AND ONE DIRECTLY ACROSS THE ROAD.</p>
3	 <p>PLANTING OF THE NATIVE <i>XANTHORHOEA AUSTRALIS</i> (AUSTRALIAN GRASS TREE) SPECIMENS TO BE PLANTED IN CLUSTERS IN LARGE MOUNDS OF SAND TO HELP THEM ESTABLISH THEMSELVES, AS WELL AS EMPHASISING THEIR UNGUARD SHAPE, UNDERPLANTING OF THE NATIVE CYCAD <i>MACROZamia PICTEAE</i> (ZAMIA PALM) & <i>PHOENIX ROEBELII</i> (PYGMY DATE) WILL CREATE A STRIKING CONTRAST.</p>
4	 <p>PLANTING BEDS FILLED WITH LOW MAINTENANCE NATIVE PLANTS SUCH AS TAMIL GRASS (<i>CHARTODON ELONGATUS</i>)</p>
5	 <p>PLANTING OF GRASSES SUCH AS <i>LOMANERA SP</i> (BASKET GRASS), <i>DIMELLA</i> & <i>DIERIS</i> ALONG WITH <i>PHOENIX</i> TO PROVIDE SOME AN ATTRACTIVE GROUND-COVER AND SOFTEN THE HARD EDGES HERE.</p>
6	 <p>NATIVE BUSH AND TO BE SUPPLEMENTED WITH ADDITIONAL PLANTING OF EUCALYPTUS VICTORIA TO HELP SOFTEN THE BOUNDARY BETWEEN THE NEW AND EXISTING PLANTING</p>

Mounds of grass trees (*Xanthorrhoea australis*) will help create varying levels of interest and planting heights to the site, the grass trees will be mixed with *Pisonia robbellii* (Pygmy Date) and underplanted with the native cycad, Zamia Palma (*Macrozamia noduli*)

Cluster of Millstream palms (*Livingstonia alfredii*) to either side of the main entrance to give an immediate sense of maturity and height to the site.

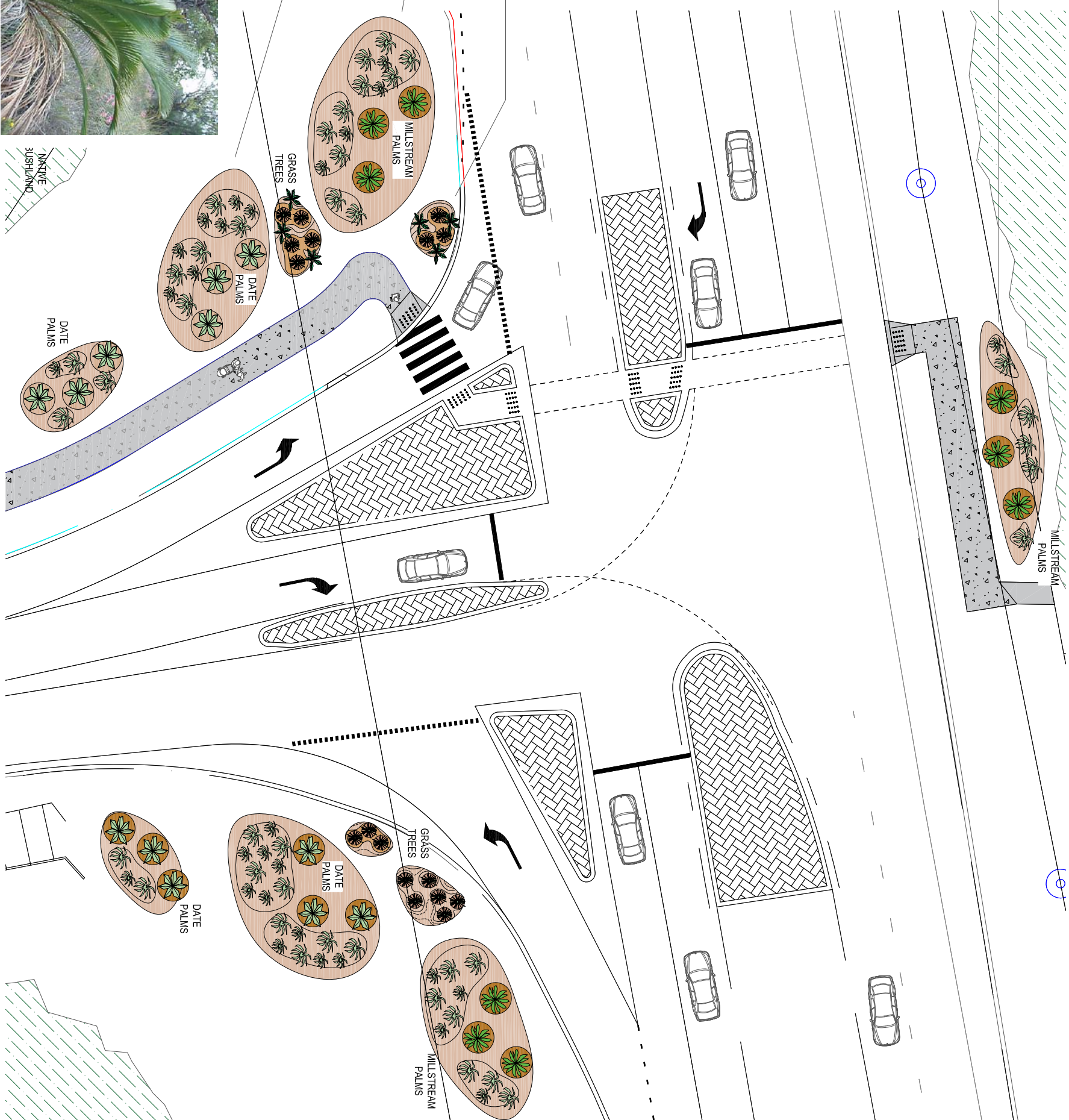
Transplanted Date Palms (*Phoenix dactylifera*) to either side of the main approach. Underplanting within this area to comprise of a mix of native grasses such as Tamil Grass (*Chrysopogon elongatus*)



Phoenix roebellenii (Dwarf Date)



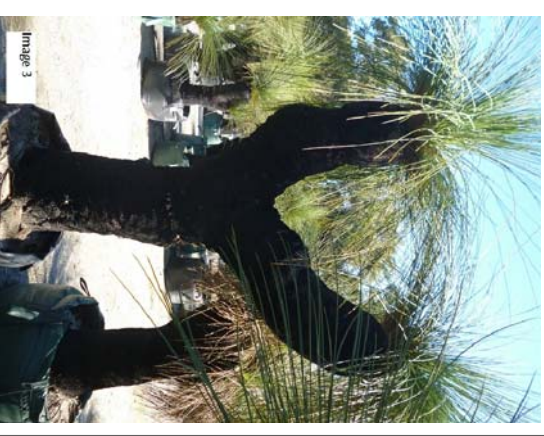
Macrozamia riedlei (Zamia Palm)



Livingstonia alfredii (Millstream palms)



Phoenix dactylifera (Date Palms)



Xanthorrhoea australis (Grass trees)

REV	ISSUE DATE	DRAFTED	CHECKED	ISSUED	DESIGNED	<div style="border: 1px solid black; padding: 5px; text-align: center;">COPYRIGHT: THIS DESIGN IS NOT TO BE COPIED OR AMENDED WITHOUT WRITTEN PERMISSION FROM THE CITY OF KARRATHA</div>	<div style="display: flex; align-items: center; justify-content: center;"><div style="text-align: left; margin-left: 10px;"><p>City of Karratha</p></div></div>	<div style="text-align: center;"><p>KARRATHA ENTRY STATEMENT DESIGN OPTION 3</p></div>	SCALE	DRAWING DESIGNATION	FIG.
					<div><div>FMN</div><div>APPROVED</div></div>				NOT TO SCALE		