

TIN CITY

EXTERNAL CORRUGATED SHEETING:
(CREAM)

WINDOW & DOOR FRAMES:
(CREAM)

STEEL ROOF SHEETING
(GREEN DARK)

COLUMNS:
(CREAM)

CENTRAL FACILITIES

RIBBED CONCRETE BLOCKWORK
(BIEGE-BROWN)

WINDOW & DOOR FRAMES:
SILVER

STEEL ROOF SHEETING & FASCIA
(CREAM)

EXTERNAL WALL PAINT (COLUMNS):
BIRCH GREY - UC0741

GYM

EXTERNAL CORRUGATED SHEETING
(SILVER LIGHT)

WINDOW & DOOR FRAMES:
(SILVER)

STEEL ROOF SHEETING
(GREY)

COLUMNS:
DUNE - COLORBOND

BLOCKS 5 & 6
EARTHY TONES

EXTERNAL WALL PAINT (ON FACE BRICK):
DULUX: DIESKAU GR12

SCREENING:
CORTEN STEEL

DOOR PANEL:
DULUX: ATTITUDE A71

ROOF SHEETING:
COLORBOND: DUNE C8

VERTICAL BATTENS:
DULUX: TANGER A80

BALUSTRADE, COLUMNS AND FRAME:
COLORBOND: MONUMENT MATTE C29

LEGEND

- EXISTING BUILDINGS
- PROPOSED SEALED BITUMEN ROADS
- CONCRETE PATHS
- PROPOSED NATIVE GRASS/TURFED AREAS
- PROPOSED MULCHED AREAS
- EXISTING GRASSED AREA TO REMAIN
- PROPOSED SHADED SEATING AREA



- A - RENDER A
THE ESPLANADE STREET VIEW FROM TIN CITY
6 ACCOMODATION BLOCKS REMOVED
- B - RENDER B
THE ESPLANADE STREET VIEW TOWARDS
PENINSULA PALMS CENTRAL FACILITIES
- C - RENDER C
THE ESPLANADE STREET VIEW TOWARDS
GYM & MAIN ENTRY
- D - RENDER D
PENINSULA PALMS CENTRAL FACILITIES ENTRY
UPGRADE

CAUTION
PROJECT DRAWING ONLY

MOTELS
NATIVE FLORA TONES

EXTERNAL WALL PAINT
(ON FACE BRICK):
DULUX: TRANQUIL
RETREAT GR24

SCREENING:
CORTEN STEEL

DOOR PANEL:
DULUX: STILL A227

ROOF SHEETING:
COLORBOND: WINDSPRAY C18

VERTICAL BATTENS:
DULUX: JUNGLE CLOAK A227

BALUSTRADE, COLUMNS AND FRAME:
COLORBOND: MONUMENT MATTE C29

BLOCKS 1-4
COASTAL TONES

EXTERNAL WALL PAINT (ON FACE BRICK):
DULUX: PALE GREY GR21

SCREENING:
CORTEN STEEL

DOOR PANEL:
DULUX: PRE SCHOOL A372

ROOF SHEETING:
COLORBOND: WINDSPRAY C18

VERTICAL BATTENS:
DULUX: RAINMAKER A371

BALUSTRADE, COLUMNS AND FRAME:
COLORBOND: MONUMENT MATTE C29

PLANTING SCHEDULE

SYMBOL	COMMON NAME	POT SIZE	BOTANICAL NAME	SYMBOL	COMMON NAME	POT SIZE	BOTANICAL NAME
P1	SNAPPY GUM	45LT	EUCALYPTUS LEUCOPHLOIA	PC5	CORAL PLANT	140MM	RUSSELLIA EQUESETIFORMIS
P2	MILLSTREAM FAN-PALM	45LT	LIVISTONA ALFREDII	PC6	LEMON GRASS	140MM	CYMOPOGON PROCERUS
PC2	SPOTTED EMU BUSH	140MM	EREMPHILA MACULATA	GC1	NYALLA	140MM	LOMANDRA LONGIFOLIA
PC3	TABLETOP WATTLE	140MM	ACACIA HILLIANA		CREeping BOOBIALA	140MM	MYOPORUM PARVIFOLIUM
PC4	KALBARRI CARPET	140MM	EREMOPHILA GLABRA		EXISTING TREES TO REMAIN. SIZE AND TYPE VARIES		

SITE PLAN
1: 750

NOT FOR CONSTRUCTION
PRELIMINARY

RioTinto

DAMPIER
PENINSULA PALMS REFURBISHMENT
PENINSULA PALMS
LANDSCAPING PLAN

HAMERSLEY IRON PTY LTD
HAMERSLEY HMS PTY LTD
ROBE RIVER MINING COMPANY PTY LTD

INFORMATION AND REPRESENTATION ON THIS
DRAWING ARE THE INTELLECTUAL PROPERTY
OF THE RIO TINTO GROUP UNLESS
SPECIFICALLY IDENTIFIED OTHERWISE. ALL
RIGHTS INCLUDING USE RESERVED.

THIRD ANGLE
PROJECTION

SCALE As indicated
DRAWING NUMBER
SK1.01
PROJECT NUMBER -



TIN CITY SITE PLAN
1 : 500

LEGEND

- EXISTING BUILDINGS
- PROPOSED SEALED BITUMEN ROADS
- CONCRETE PATHS
- PROPOSED NATIVE GRASS/TURFED AREAS
- PROPOSED MULCHED AREAS
- EXISTING GRASSED AREA TO REMAIN
- PROPOSED SHADED SEATING AREA



- A - RENDER A
THE ESPLANADE STREET VIEW FROM TIN CITY
6 ACCOMODATION BLOCKS REMOVED
- B - RENDER B
THE ESPLANADE STREET VIEW TOWARDS
PENINSULA PALMS CENTRAL FACILITIES
- C - RENDER C
THE ESPLANADE STREET VIEW TOWARDS
GYM & MAIN ENTRY
- D - RENDER D
PENINSULA PALMS CENTRAL FACILITIES ENTRY
UPGRADE

TIN CITY

EXTERNAL CORRUGATED SHEETING :
(CREAM)

WINDOW & DOOR FRAMES:
(CREAM)



PLANTING SCHEDULE

SYMBOL	COMMON NAME	POT SIZE	BOTANICAL NAME	SYMBOL	COMMON NAME	POT SIZE	BOTANICAL NAME
P1	SNAPPY GUM	45LT	EUCALYPTUS LEUCOPHLOIA	PC5	CORAL PLANT	140MM	RUSSELLIA EOUSSETIFORMIS
P2	MILLSTREAM FAN-PALM	45LT	LIVISTONA ALFREDII	PC6	LEMON GRASS	140MM	CYMOPOGON PROCERUS
PC2	SPOTTED EMU BUSH	140MM	EREMPHILA MACULATA	GC1	NYALLA	140MM	LOMANDRA LONGIFOLIA
PC3	TABLETOP WATTLE	140MM	ACACIA HILLIANA		CREeping BOOBIALA	140MM	MYOPORUM PARVIFOLIUM
PC4	KALBARRI CARPET	140MM	EREMOPHILA GLABRA		EXISTING TREES TO REMAIN. SIZE AND TYPE VARIES		

NOT FOR CONSTRUCTION
PRELIMINARY

DRAWN
TRACED
CHECKED
SUPT DRAFT
PROJ. ENG.
APPROVED
APP. FOR CONST.

N.MCDONALD

RioTinto

DAMPIER
PENINSULA PALMS REFURBISHMENT
PENINSULA PALMS
TIN CITY SITE PLAN

HAMERSLEY IRON PTY LTD
HAMERSLEY HMS PTY LTD
ROBE RIVER MINING COMPANY PTY LTD

INFORMATION AND REPRESENTATION ON THIS
DRAWING ARE THE INTELLECTUAL PROPERTY
OF THE RIO TINTO GROUP UNLESS
SPECIFICALLY IDENTIFIED OTHERWISE. ALL
RIGHTS INCLUDING USE RESERVED.

THIRD ANGLE
PROJECTION

SCALE As indicated
DRAWING NUMBER
SK1.02

PROJECT NUMBER -

REV
B

CENTRAL FACILITIES

RIBBED CONCRETE BLOCKWORK
(BIEGE-BROWN)

WINDOW & DOOR FRAMES:
SILVER

STEEL ROOF SHEETING & FASCIA
(CREAM)

EXTERNAL WALL PAINT (COLUMNS):
BIRCH GREY - UC0741

GYM

EXTERNAL CORRUGATED SHEETING
(SILVER LIGHT)

WINDOW & DOOR FRAMES:
(SILVER)

STEEL ROOF SHEETING
(GREY)

COLUMNS:
DUNE - COLORBOND

PLANTING SCHEDULE

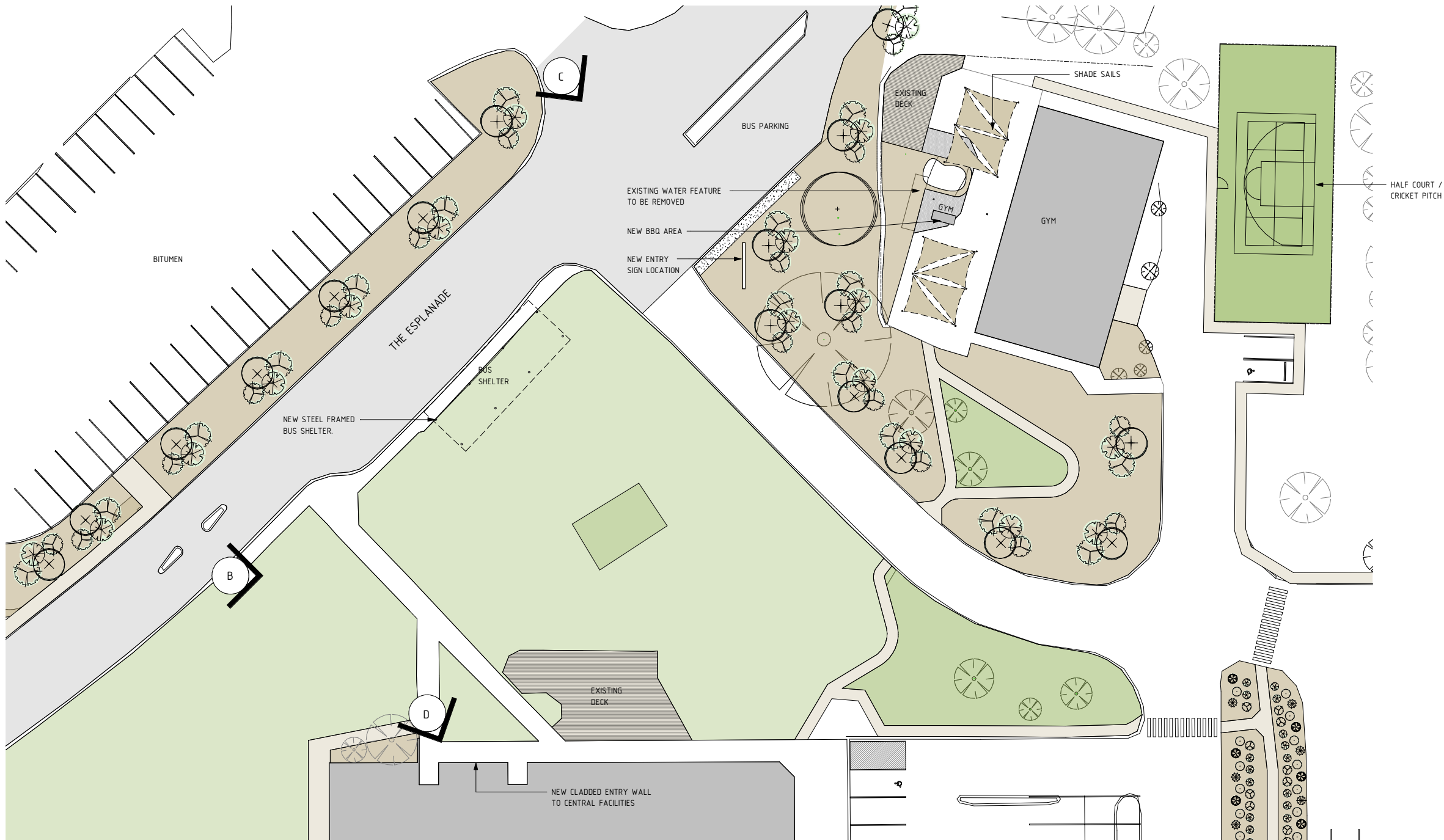
SYMBOL	COMMON NAME	POT SIZE	BOTANICAL NAME	SYMBOL	COMMON NAME	POT SIZE	BOTANICAL NAME
P1	SNAPPY GUM	45LT	EUCALYPTUS LEUCOPHLOIA	PC5	CORAL PLANT	140MM	RUSSELLIA EOUSSETIFORMIS
P2	MILLSTREAM FAN-PALM	45LT	LIVISTONA ALFREDII	PC6	LEMON GRASS	140MM	CYMOPOGON PROCERUS
PC2	SPOTTED EMU BUSH	140MM	EREMPHILA MACULATA	GC1	NYALLA	140MM	LOMANDRA LONGIFOLIA
PC3	TABLETOP WATTLE	140MM	ACACIA HILLIANA		CREeping BOOBIALA	140MM	MYOPORUM PARVIFOLIUM
PC4	KALBARRI CARPET	140MM	EREMPHILA GLABRA		EXISTING TREES TO REMAIN. SIZE AND TYPE VARIES		

LEGEND

- EXISTING BUILDINGS
- PROPOSED SEALED BITUMEN ROADS
- CONCRETE PATHS
- PROPOSED NATIVE GRASS/TURFED AREAS
- PROPOSED MULCHED AREAS
- EXISTING GRASSED AREA TO REMAIN
- PROPOSED SHADED SEATING AREA



- A - RENDER A
THE ESPLANADE STREET VIEW FROM TIN CITY
& ACCOMMODATION BLOCKS REMOVED
- B - RENDER B
THE ESPLANADE STREET VIEW TOWARDS
PENINSULA PALMS CENTRAL FACILITIES
- C - RENDER C
THE ESPLANADE STREET VIEW TOWARDS
GYM & MAIN ENTRY
- D - RENDER D
PENINSULA PALMS CENTRAL FACILITIES ENTRY
UPGRADE



MAIN ENTRY SITE PLAN
1 : 250

NOT FOR CONSTRUCTION
PRELIMINARY

REV	BY	DATE	DESCRIPTION	CKD	APP
A	NM	25/06/18	ISSUED FOR INFORMATION		
B	NM	11/07/18	ISSUED FOR INFORMATION		
C	NM	16/04/19	ISSUED FOR DEVELOPMENT APPROVAL		

REV	BY	DATE	DESCRIPTION	CKD	APP

DRAWN	NMCDONALD
TRACED	
CHECKED	
SUPT DRAFT	
PROJ. ENG.	
APPROVED	
APP. FOR CONST.	

RioTinto

DAMPIER
PENINSULA PALMS REFURBISHMENT
PENINSULA PALMS
MAIN ENTRY SITE PLAN

HAMERSLEY IRON PTY LTD
HAMERSLEY HMS PTY LTD
ROBE RIVER MINING COMPANY PTY LTD

INFORMATION AND REPRESENTATION ON THIS
DRAWING ARE THE INTELLECTUAL PROPERTY
OF THE RIO TINTO GROUP UNLESS
SPECIFICALLY IDENTIFIED OTHERWISE. ALL
RIGHTS INCLUDING USE RESERVED.

THIRD ANGLE
PROJECTION

SCALE As indicated
DRAWING NUMBER
SK1.03
PROJECT NUMBER -

REV
C



0



0



1



1

R

D		RioTinto

HAMERSLEY IRON PTY LTD
HAMERSLEY HMS PTY LTD
ER MINING COMPANY PTY LTD

INFORMATION AND REPRESENTATION ON THIS
DRAWING ARE THE INTELLECTUAL PROPERTY
OF THE RIO TINTO GROUP UNLESS
SPECIFICALLY IDENTIFIED OTHERWISE. ALL
RIGHTS INCLUDING USE RESERVED.

THIRD ANGLE
PROJECTION

SCALE
DRAWING NUMBER
SK1.04

PROJECT NUMBER

EXISTING ROOF STRUCTURE AND SHEETING TO REMAIN (TYP.)

▼ TOP OF WALL
5200

▼ CL. FIRST
5000

▼ FFL. FIRST
2600

▼ CL. GROUND
2400

▼ FFL. GROUND
0

1 : 50

— EXISTING BALUSTRADE TO BE DEMOLISHED AND NEW STEEL BALUSTRADE TO FIRST FLOOR BALCONY INSTALLED - ENSURE CLEAR WIDTH IS 1m MINIMUM

— EXISTING EXTERNAL WALLS, WINDOWS AND
DOORS TO REMAIN (TYP.)

MODIFY FOOTPATH AS REQUIRED TO
ALLOW FOR NEW STAIRS

— EXISTING CONCRETE STAIRS AND TIMBER BALUSTRADE TO BE DEMOLISHED AND NEW STAIRS WITH NEW HANDRAILS / BALUSTRADES TO BE INSTALLED

▼ TOP OF WALL
5200

▼ CL. FIRST
5000

▼ FFL. FIRST
2600

▼ CL. GROUND
2400

▼ FFL. GROUND
0

EXISTING BALUSTRADE TO BE DEMOLISHED AND NEW
STEEL BALUSTRADE TO FIRST FLOOR BALCONY
INSTALLED - ENSURE CLEAR WIDTH IS 1m MINIMUM

EXISTING ROOF STRUCTURE AND
SHEETING TO REMAIN (TYP.)

EXISTING CONCRETE STAIRS AND TIMBER BALUSTRADE TO
BE DEMOLISHED AND NEW STAIRS WITH NEW HANDRAILS /
BALUSTRADES TO BE INSTALLED

1 : 50

MOTELS
NATIVE FLORIDAMOTELS
NATIVE FLORA TONES

EXTERNAL WALL PAINT (ON FACE BRICK):
DULUX: Tranquil Retreat GR24

ROOF SHEETING:
COLORBOND: Windspray C18

SCREENING:
CORTEN STEEL

VERTICAL BATTENS:
DULUX: Jungle Cloak A227

DOOR PANEL:
DULUX: Still A227

BALUSTRADE, COLUMNS AND FRAME:

CAUTION
PROJECT DRAWING ONLY

NOT FOR CONSTRUCTION
PRELIMINARY

RioTinto

HAMERSLEY IRON PTY LTD
HAMERSLEY HMS PTY LTD
VER MINING COMPANY PTY LTD

INFORMATION AND REPRESENTATION ON THE DRAWING ARE THE INTELLECTUAL PROPERTY OF THE RIO TINTO GROUP UNLESS SPECIFICALLY IDENTIFIED OTHERWISE. ALL RIGHTS INCLUDING USE RESERVED.

THIRD ANGLE
PROJECTION

DAMPIER
PENINSULA PALMS REFURBISHMENT
PENINSULA PALMS
MOTEL ELEVATIONS

SCALE 1 : 1

DRAWING NUMBER	SK1.05
----------------	--------

PROJECT NUMBER

CL. FIRST
5420
TOP OF WALL
5385
FFL. FIRST
2845
CL. GROUND
2600
FFL. GROUND
0

BLOCK 5 - SOUTH ELEVATION

1 : 100

EXISTING EXTERNAL WALLS TO REMAIN
VERTICAL POWDERCOATED ALUMINIUM
BATTEN SCREENING TO STAIRS
(TYPICAL)
EXISTING ROOF SHEETING TO REMAIN
CORTEN SCREENING
(TYPICAL)
EXISTING STEEL BALUSTRADE, COLUMNS
AND BALCONY SLAB TO REMAIN
LINE OF EXISTING RETAINING WALL
TO REMAIN SHOWN DASHED
NEW ENTRY DOORS IN
EXISTING DOOR FRAMES
EXISTING STEEL STAIRS WITH
HANDRAILS TO REMAIN

CL. FIRST
5420
TOP OF WALL
5385
FFL. FIRST
2845
CL. GROUND
2600
FFL. GROUND
0

BLOCK 5 - NORTH ELEVATION

1 : 100

EXISTING EXTERNAL WALLS TO REMAIN
VERTICAL POWDERCOATED ALUMINIUM
BATTEN SCREENING TO STAIRS
(TYPICAL)
EXISTING ROOF SHEETING TO REMAIN
CORTEN SCREENING
(TYPICAL)
EXISTING STEEL BALUSTRADE, COLUMNS
AND BALCONY SLAB TO REMAIN
NEW ENTRY DOORS IN
EXISTING DOOR FRAMES
EXISTING STEEL STAIRS WITH
HANDRAILS TO REMAIN

CL. FIRST
5420
TOP OF WALL
5385
FFL. FIRST
2845
CL. GROUND
2600
FFL. GROUND
0

BLOCK 5 - EAST ELEVATION

1 : 100

EXISTING ROOF SHEETING TO REMAIN
EXISTING STEEL BALUSTRADE,
COLUMNS AND BALCONY SLAB
TO REMAIN
EXISTING RETAINING WALL
TO REMAIN
EXISTING STEEL STAIRS WITH
HANDRAILS TO REMAIN

BLOCK 5 AND 6 EARTHY TONES

EXTERNAL WALL PAINT (ON FACE BRICK):
DULUX: Dyeskau GR12

ROOF SHEETING:
COLORBOND: Dune CB

SCREENING:
CORTEN STEEL

VERTICAL BATTENS:
DULUX: Tangier A80

DOOR PANEL:
DULUX: Attitude A71

BALUSTRADE, COLUMNS AND FRAME:
COLORBOND: Monument Matte C29

NOT FOR CONSTRUCTION
PRELIMINARY

SHEET SIZE A1 REFERENCES		REVISIONS		REVISIONS	
REV	BY	DATE	DESCRIPTION	CKD	APP

SHEET SIZE A1 REFERENCES		REVISIONS		REVISIONS	
REV	BY	DATE	DESCRIPTION	CKD	APP

DRAWN
TRACED
CHECKED
SUPT DRAFT
PROJ. ENG.
APPROVED
APP. FOR CONST.

N.McDONALD

RioTinto

DAMPIER
PENINSULA PALMS REFURBISHMENT
PENINSULA PALMS
BLOCK 5 ELEVATIONS

HAMERSLEY IRON PTY LTD
HAMERSLEY HMS PTY LTD
ROBE RIVER MINING COMPANY PTY LTD

INFORMATION AND REPRESENTATION ON THIS
DRAWING ARE THE INTELLECTUAL PROPERTY
OF THE RIO TINTO GROUP UNLESS
SPECIFICALLY IDENTIFIED OTHERWISE. ALL
RIGHTS INCLUDING USE RESERVED.

THIRD ANGLE
PROJECTION

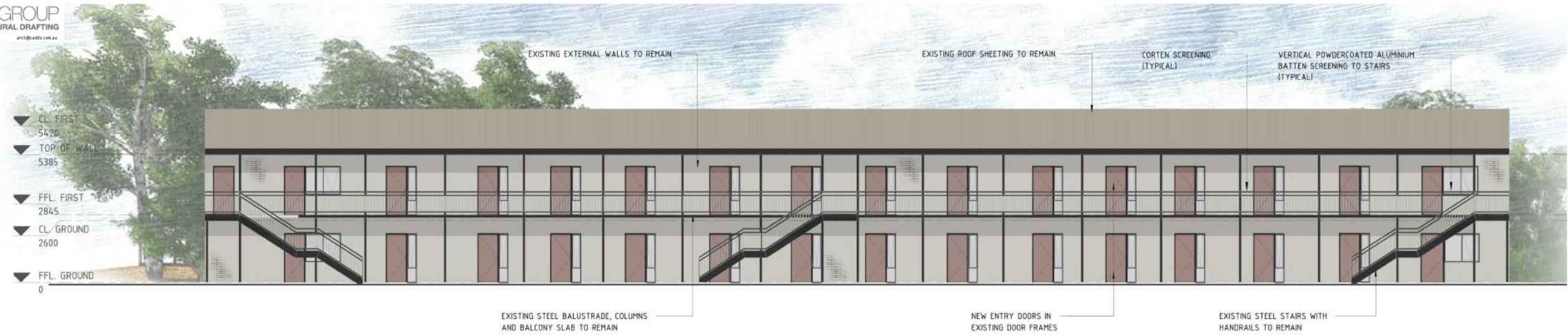
SCALE 1 : 1

DRAWING NUMBER
SK1.06

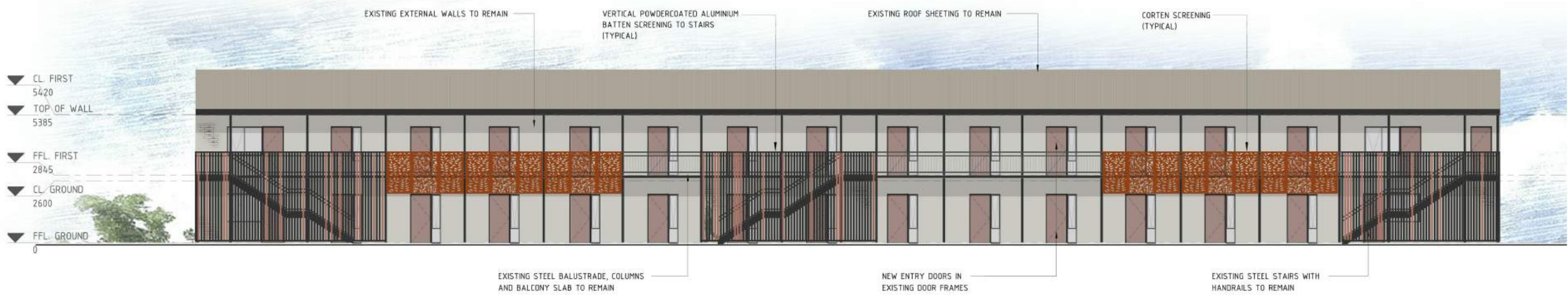
PROJECT NUMBER -

REV

CAUTION
PROJECT DRAWING ONLY



BLOCK 6 - SOUTH ELEVATION
1 : 100



BLOCK 6 - NORTH ELEVATION
1 : 100



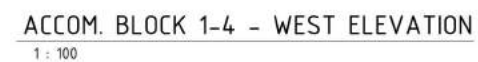
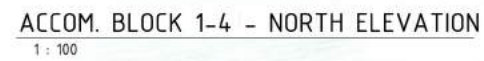
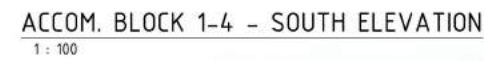
BLOCK 6 - EAST ELEVATION
1 : 100



NOT FOR CONSTRUCTION
PRELIMINARY

SHEET SIZE A1			REFERENCES			REVISIONS			REVISIONS			DRAWN			DRAWING NUMBER			PROJECT NUMBER		
820	1	2	3	4	5	6	7	8	9	10	11	12	13	14	15	16	17	18	19	20
			A	NM	29/05/18	ISSUED FOR INFORMATION						DRAWN	NMcDONALD		HAMERSLEY IRON PTY LTD		INFORMATION AND REPRESENTATION ON THIS			THIRD ANGLE
			B	NM	25/06/18	ISSUED FOR INFORMATION						TRACED			HAMERSLEY HMS PTY LTD		DRAWING ARE THE INTELLECTUAL PROPERTY			PROJECTION
			C	NM	16/04/19	ISSUED FOR DEVELOPMENT APPROVAL						CHECKED			ROBE RIVER MINING COMPANY PTY LTD		OF THE RIO TINTO GROUP UNLESS			
												SUPT DRAFT					SPECIFICALLY IDENTIFIED OTHERWISE. ALL			
												PROJ. ENG.					RIGHTS INCLUDING USE RESERVED.			
												APPROVED					SCALE 1 : 1			
												APP. FOR CONST.					DRAWING NUMBER			
																	SK1.07			
																	PROJECT NUMBER -			

CAUTION
PROJECT DRAWING ONLY



DAMPIER
PENINSULA PALMS REFURBISHMENT
PENINSULA PALMS
BLOCKS 1-4

INFORMATION AND REPRESENTATION ON THIS
DRAWING ARE THE INTELLECTUAL PROPERTY
OF THE RIO TINTO GROUP UNLESS
SPECIFICALLY IDENTIFIED OTHERWISE. ALL
RIGHTS INCLUDING USE RESERVED.

CAUTION
PROJECT DRAWING ONLY

THIRD ANGLE
PROJECTION

SCALE 1 : 1
DRAWING NUMBER SK1.08
PROJECT NUMBER