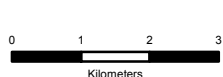
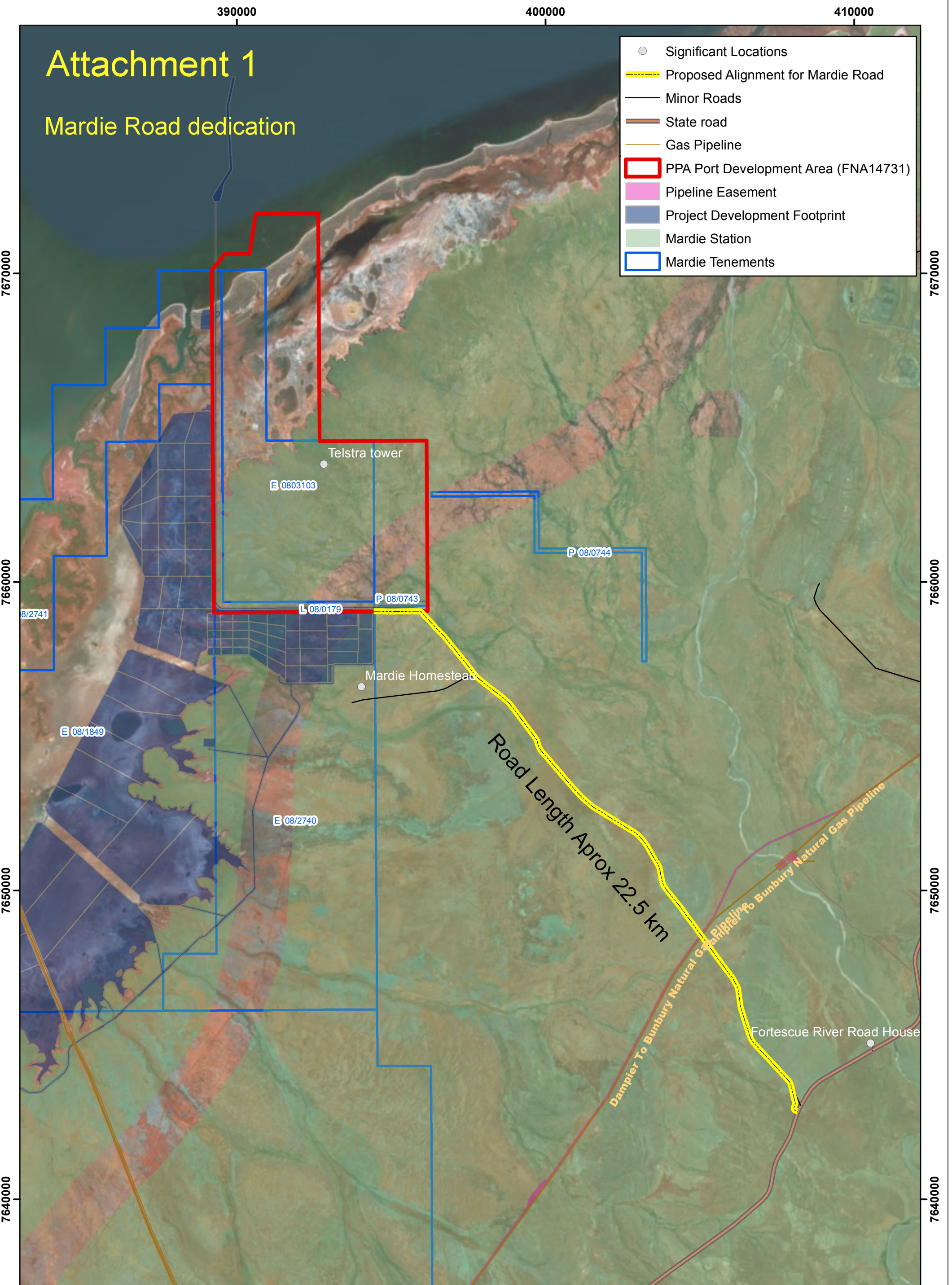


Attachment 1

Mardie Road dedication

- Significant Locations
- Proposed Alignment for Mardie Road
- Minor Roads
- State road
- Gas Pipeline
- PPA Port Development Area (FNA14731)
- Pipeline Easement
- Project Development Footprint
- Mardie Station
- Mardie Tenements



Mardie Project
Proposed Future Mardie Road Alignment

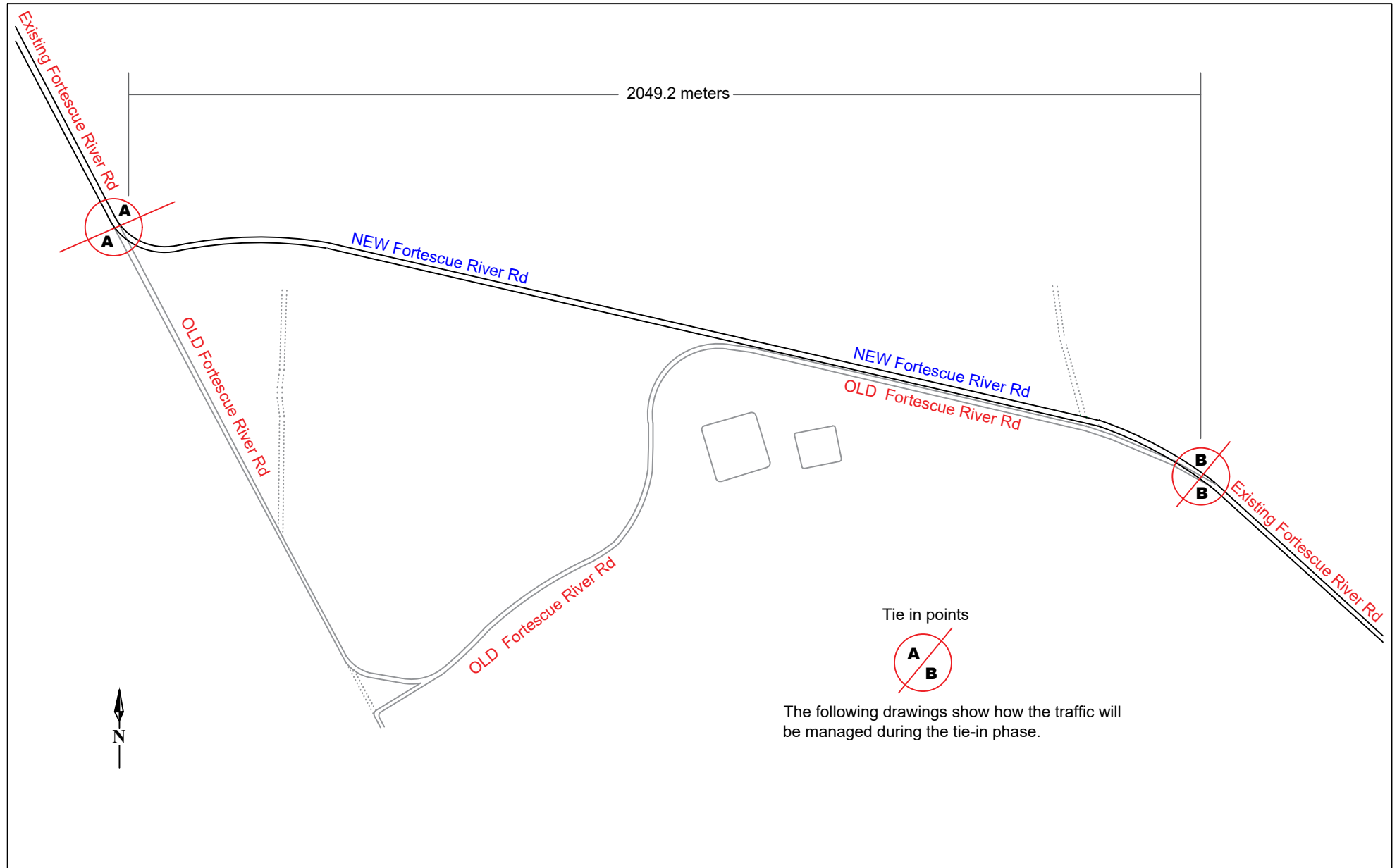


[illegible]

City of
Karratha

PROPOSED ACCESS ARRANGEMENT

Fortescue River Road alignment



**Traffic Management
Plan Services**
tel: 9291 6802



CAPE PRESTON
CITIC Pacific Mining Management Pty Ltd



**New Fortescue River Rd
Alignment & Tie-in points**

Drawn by: Breck Abbotts. RTM:0035
Date: 15:10:2019
Revision: 00
No: NTS Generally to Proportion

TMPS-522

1