

SHARPE AVENUE, KARRATHA

Arts Precinct Proposal

CITY OF KARRATHA

10TH SEPTEMBER 2021

CONTENTS

1.

RED EARTH ARTS PRECINCT

2.

RED EARTH ARTS PRECINCT 3D VISUALISATIONS

3.

LOT 7020 KNOWLEDGE HUB

4.

LOT 7020 KNOWLEDGE HUB 3D VISUALISATIONS

5.

LOT 7020 ARTS EXPANSION

6.

SUMMARY

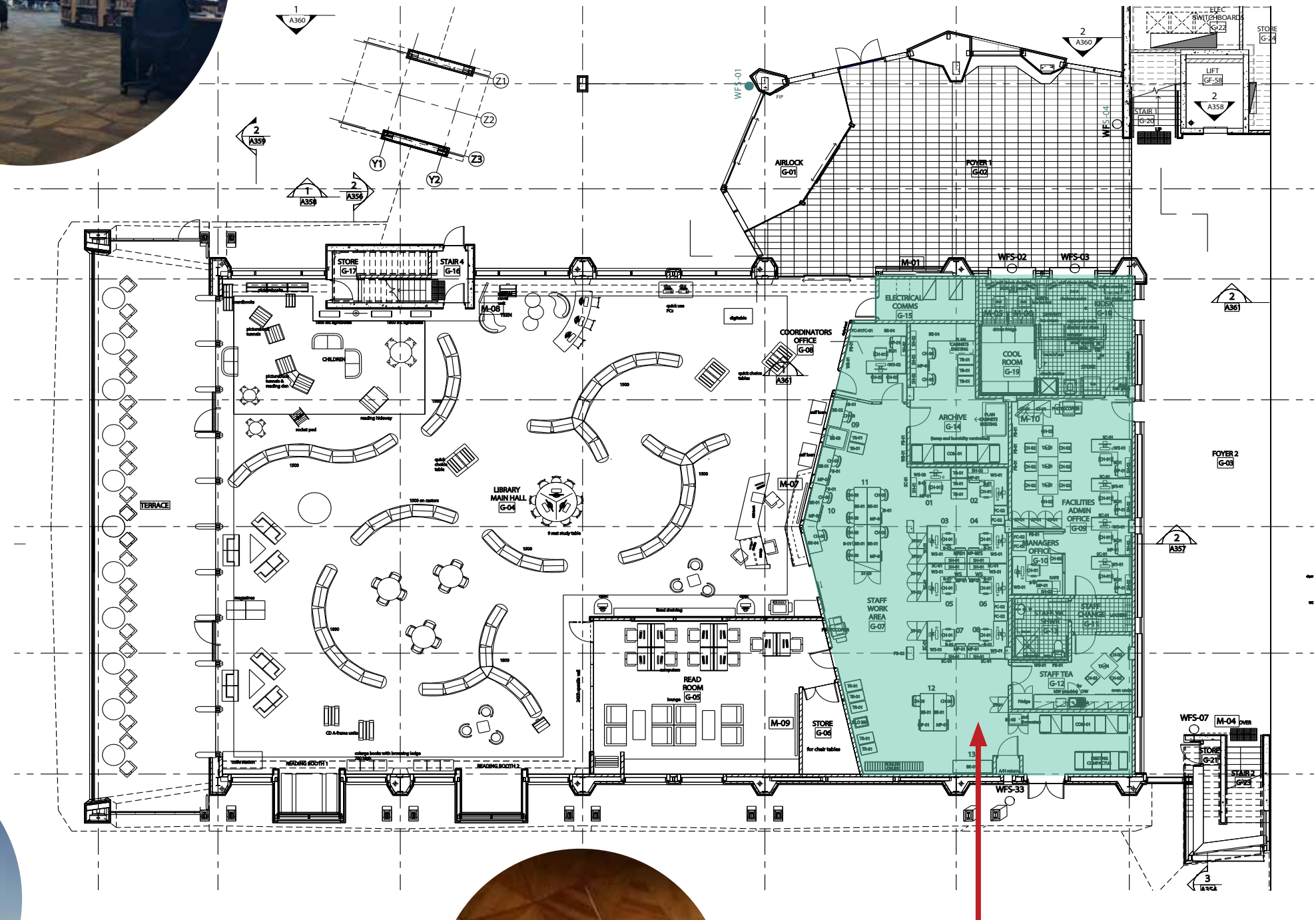
1.

RED EARTH ARTS PRECINCT

DESIGN

EXISTING LIBRARY

plus



BACK OF HOUSE FACILITIES

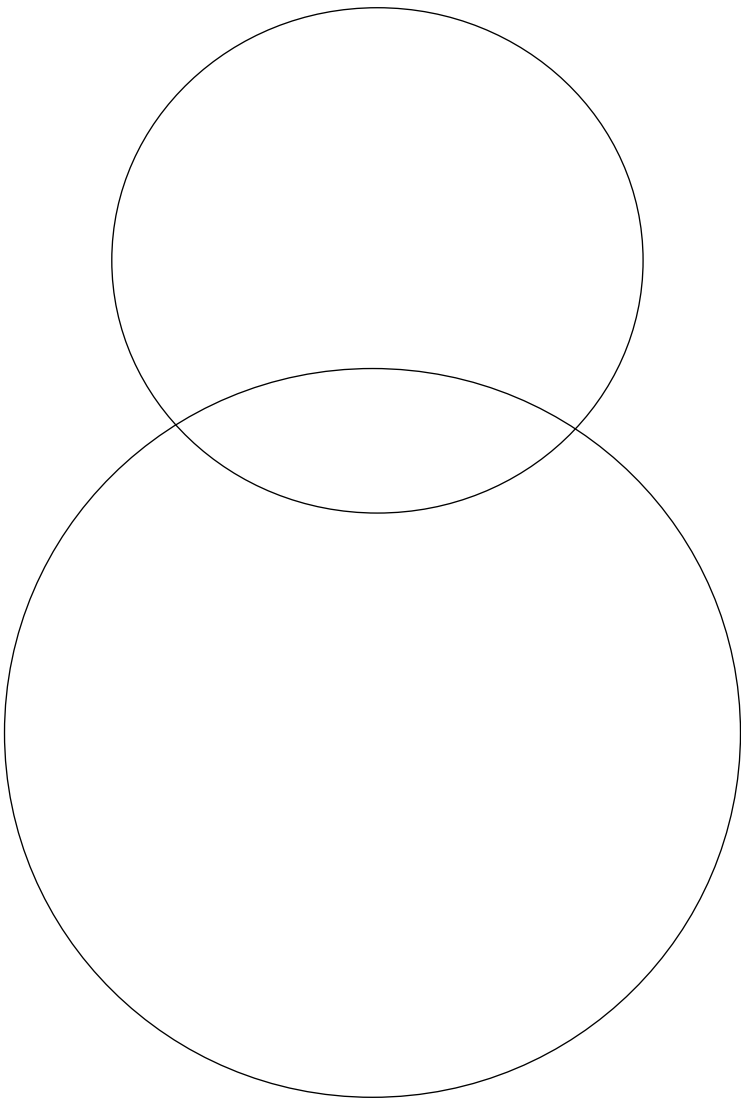


DESIGN

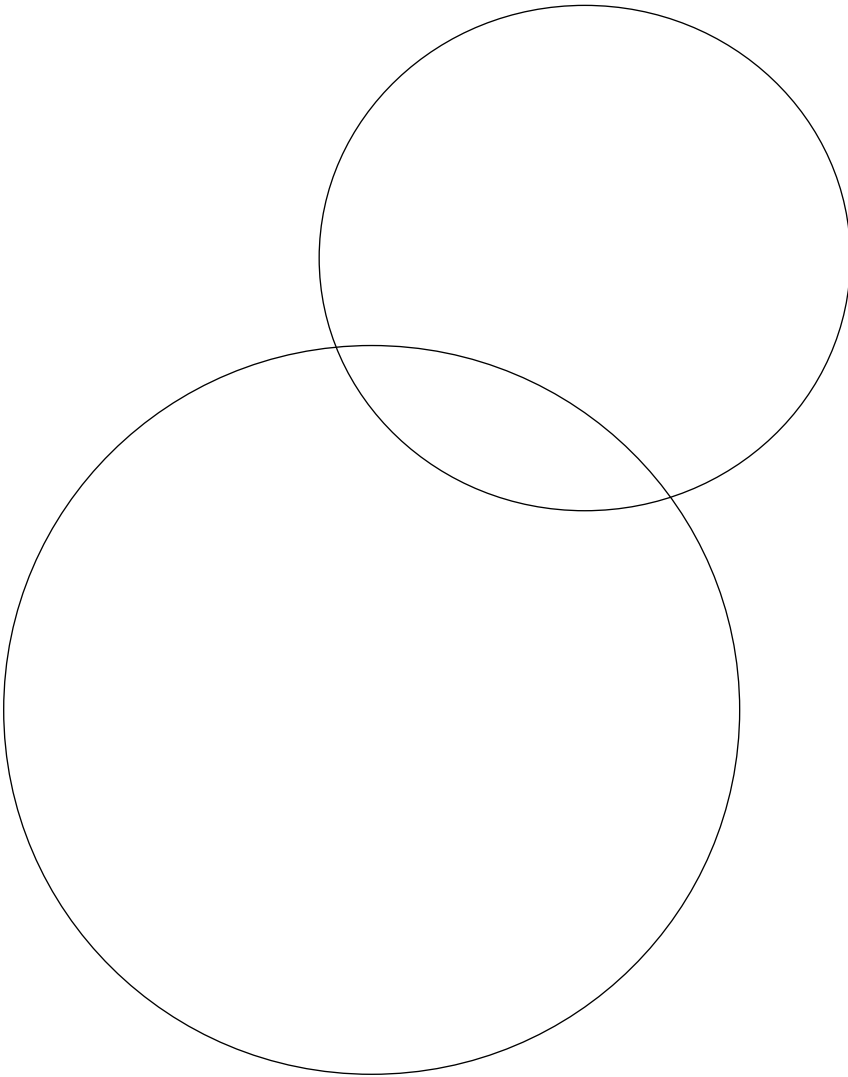
DESIGN ELEMENTS



OPPORTUNITY
The m



BLAH BLAH
The facili



BLAH BLAH
Look

DESIGN

FLEXIBLE CREATIVE SPACE

plus



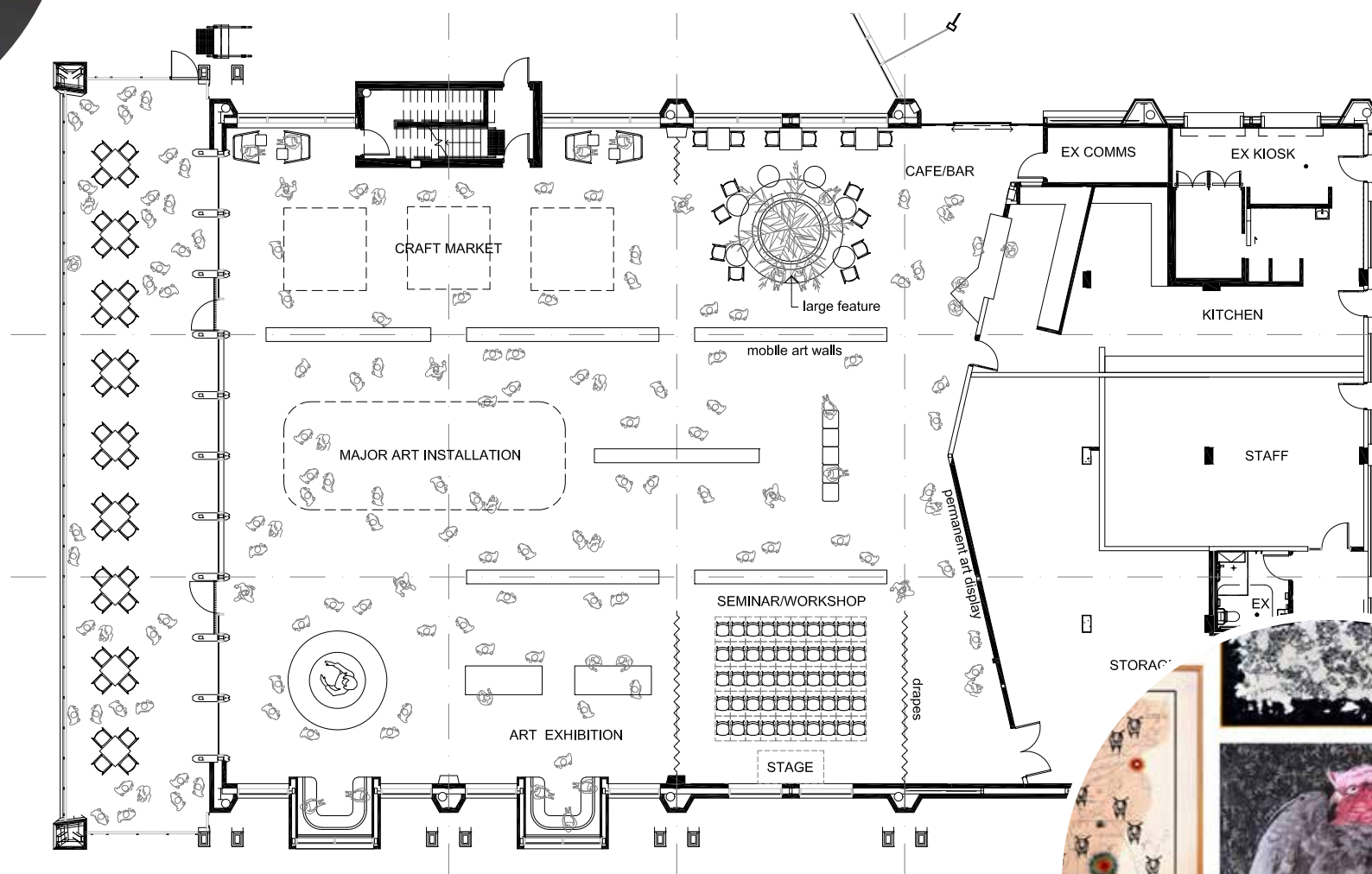
OPPORTUNITIES

ART DISPLAY



MOBILE ART WALLS

A self-supporting modular wall system can be configured for different types of exhibition.



LIGHTING STRATEGIES

Suspended grid lighting can be employed for lighting larger areas. The raised access floor also gives the flexibility for localised lighting.



PERMANENT COLLECTION

Artworks such as the Cossack Collection can be permanent fixtures on perimeter walls where direct light is not an issue.



OPPORTUNITIES

ART INSTALLATIONS

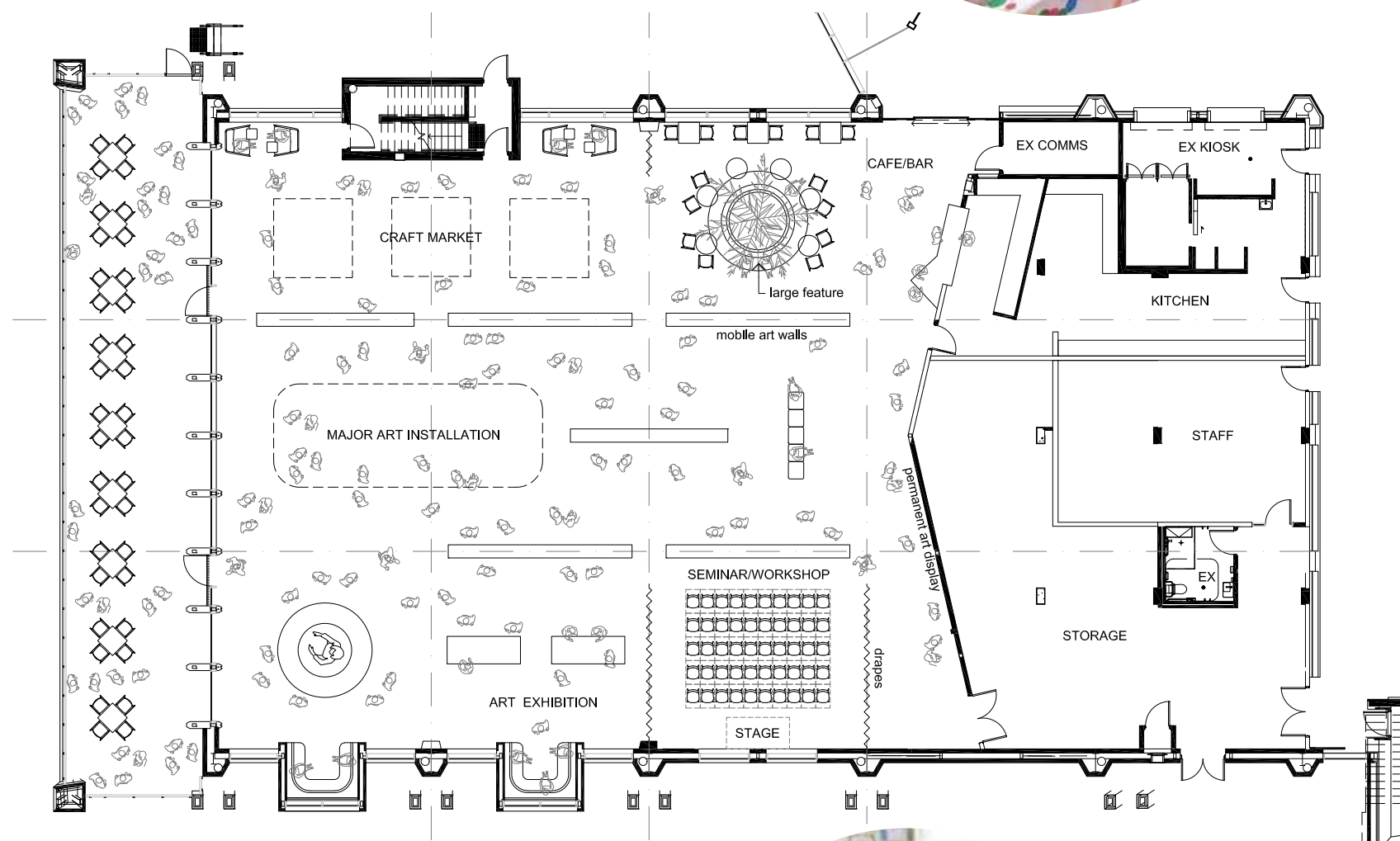
IMMERSIVE

Immersive installations can be housed in self-contained rooms within the space - a room within a room. All power requirements can come through the floor.



SUSPENDED WORKS

The roof structure should be assessed to see if suspended works can be displayed. Consider installing anchor.



FREESTANDING WORKS

These can be accommodated easily with the access floor for any power requirements.

INTERACTIVE EXHIBITS

Engage people with interactive displays often used by organisations such as museums and Scitech.



OPPORTUNITIES

EXPOSITIONS AND TRADE SHOWS



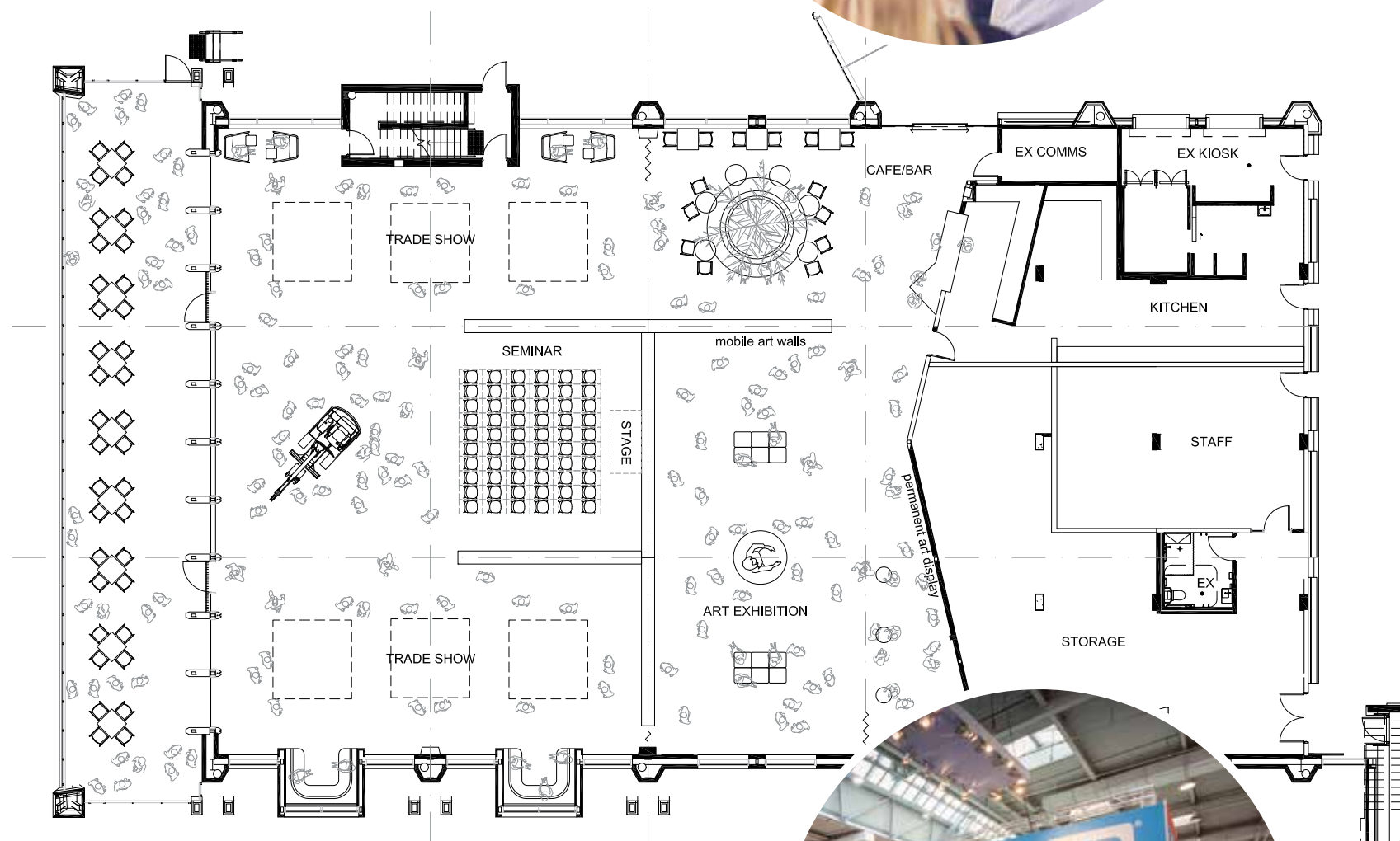
CORPORATE DISPLAYS

Large areas can be opened up to display larger items. The limit would be what can fit through the doors and what can the floor take.



SEMINARS AND TRAINING

The access floor allows for multiple configurations of trade show booths.



TRADE SHOWS

The access floor allows for multiple configurations of trade show booths.



OPPORTUNITIES

COMMUNITY EVENTS

plus



FUNCTIONS

Awards evening and openings.



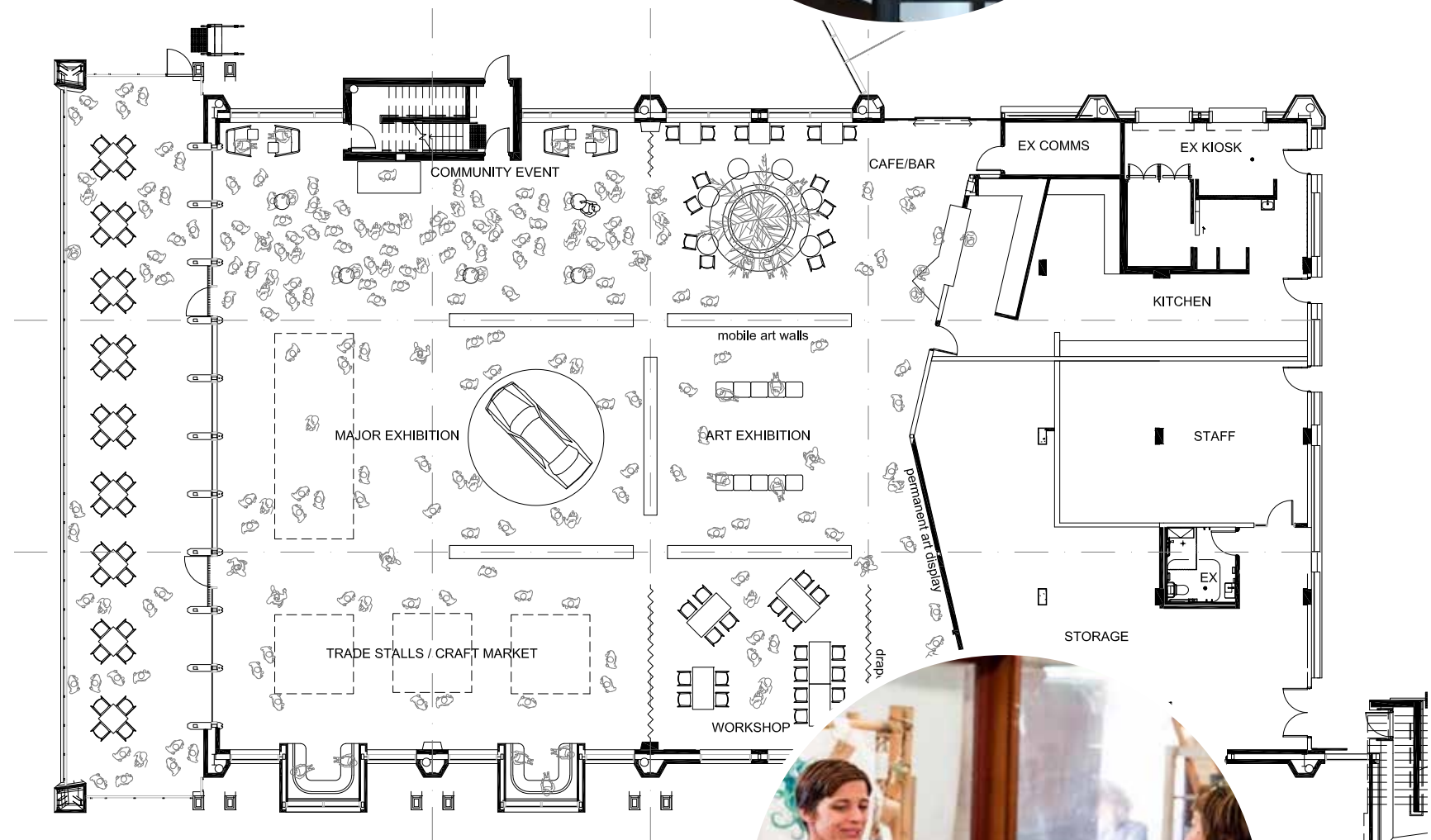
CAFE / BAR

This is best placed at the entry with the cafe/bar embedded in the existing angled wall so that it can be closed off when not required to be manned.



FLEXIBLE CAFE

The seating for the cafe can be expanded whenever required.



EVENING EVENTS

The terrace is a great place for evening events.

CRAFT/MAKER MARKETS

Small-scale events such as collector's fairs, book fairs, and craft markets will keep the space active and interesting.



OPPORTUNITIES

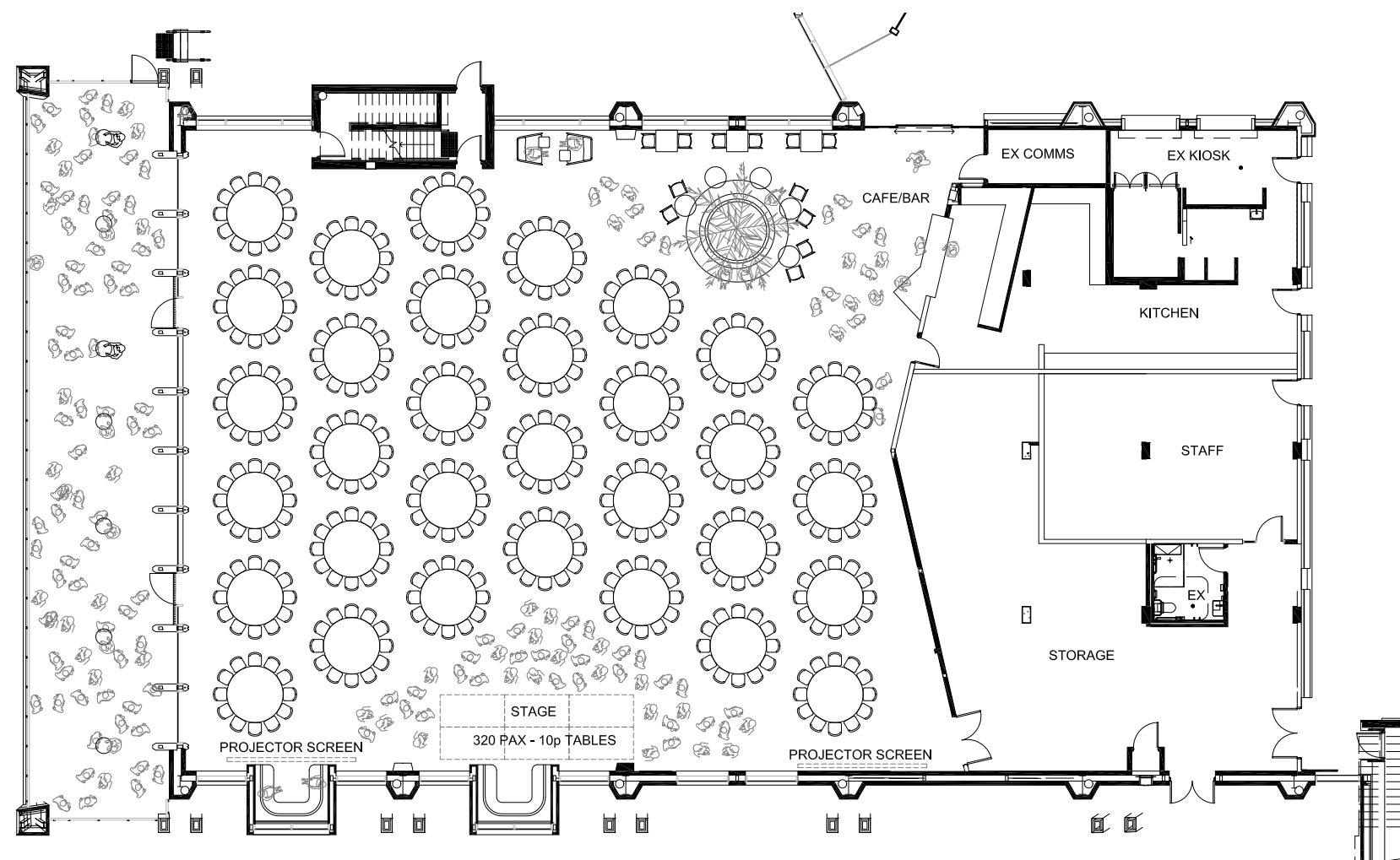
BANQUET HALL

EVENING BAR

Can be used for large events or can open for small gatherings when art walls are utilised.



RECEPTIONS AND DINING FUNCTIONS



GALA AND AWARDS EVENINGS

Industry events can be hosted with appropriate audio visual displays.

2.

RED EARTH ARTS PRECINCT

3D VISUALISATIONS

VISUALISATION

EXTERIOR

plus



VISUALISATION

INTERIOR

plus



VISUALISATION

INTERIOR

plus

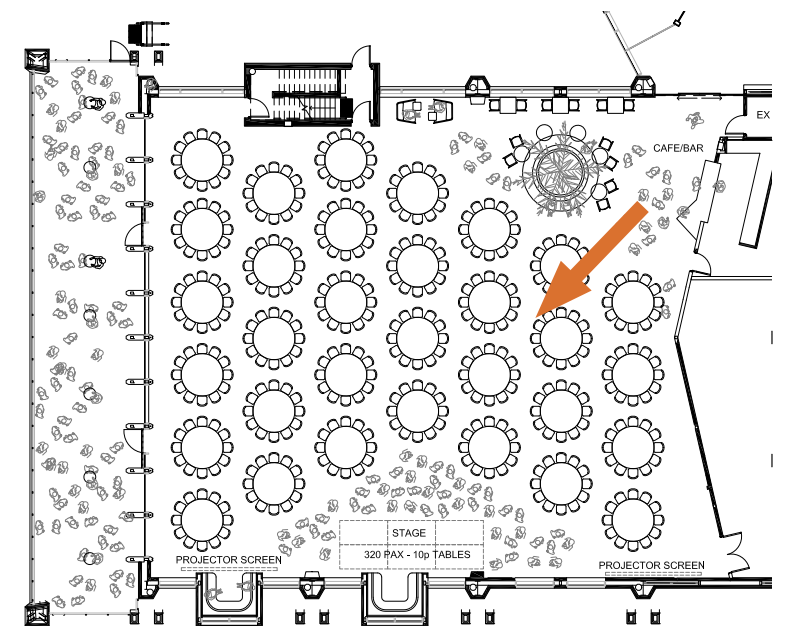


VISUALISATION

INTERIOR

plus

model still under construction - crashed



3.

LOT 7020

KNOWLEDGE HUB

DESIGN

DESIGN ELEMENTS



CONTEXT

The materials and forms should celebrate the stunning Pilbara landscape but not be dominating. The Knowledge Hub is part of a wider precinct and they buildings and interiors should speak to each other.



COMMUNITY

The facilities need to be of benefit to a wide and varied cross-section of the community. They need to be accessible and inclusive.



CONTEMPORARY

Look at the latest trends in Libraries. They are no longer just books on shelves but embrace technology to inform, share and deliver. Of course books are an integral part of this but other facilities such as recording studios and maker-spaces will excite a previously excluded part of the community and bring people together.

DESIGN

KNOWLEDGE HUB GROUND FLOOR



DESIGN

KNOWLEDGE HUB GROUND FLOOR



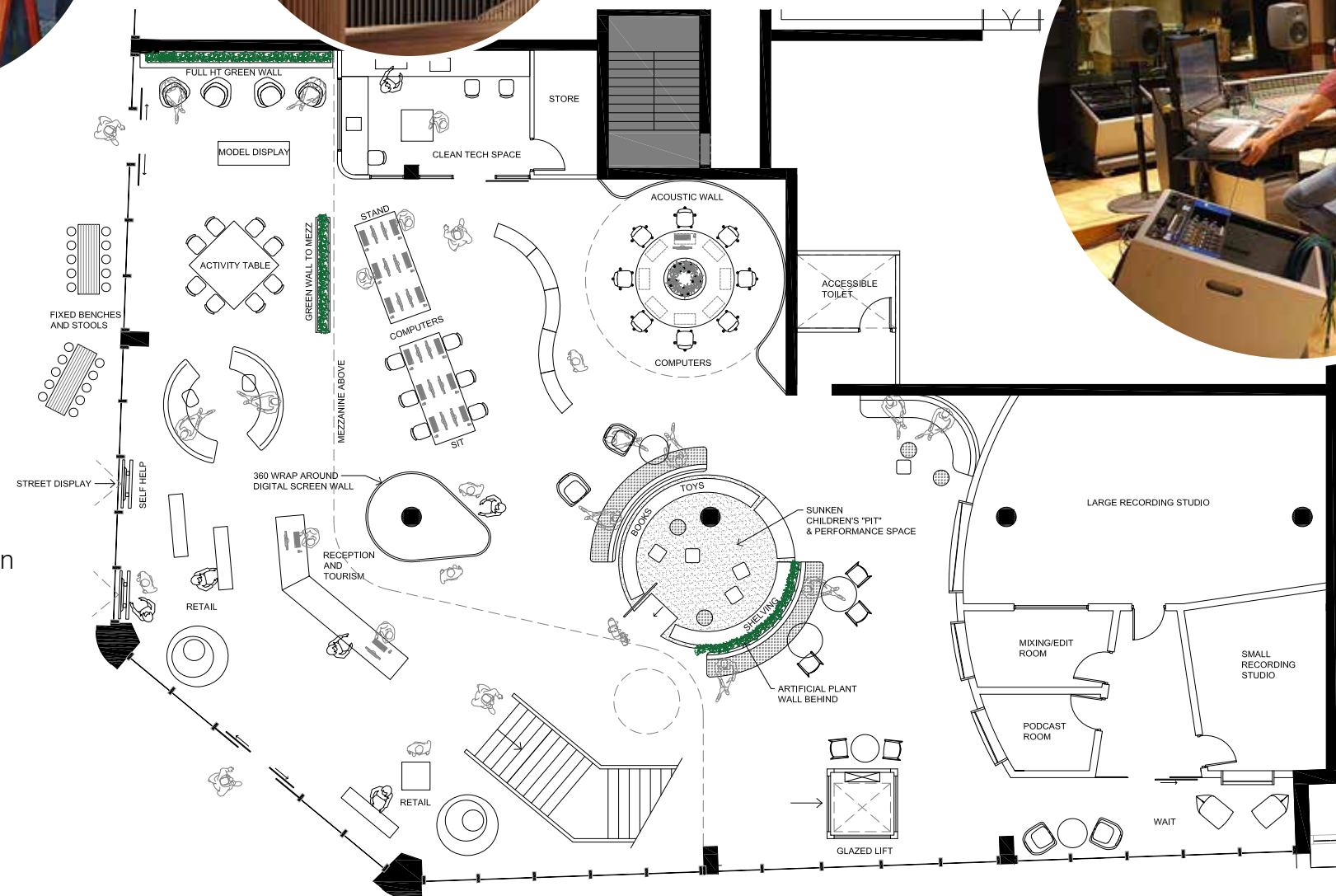
TECHNOLOGY HUB

Spaces for activities such as 3D printing and exploring clean maker projects



TIMBER LINING

Timber battens line the wall creating a warm and inviting feel



KIDS

A sunken pit area for kids to safely play and explore



DIGITAL SCREENS

Will create a "wow" factor at the entry



RECORDING STUDIO

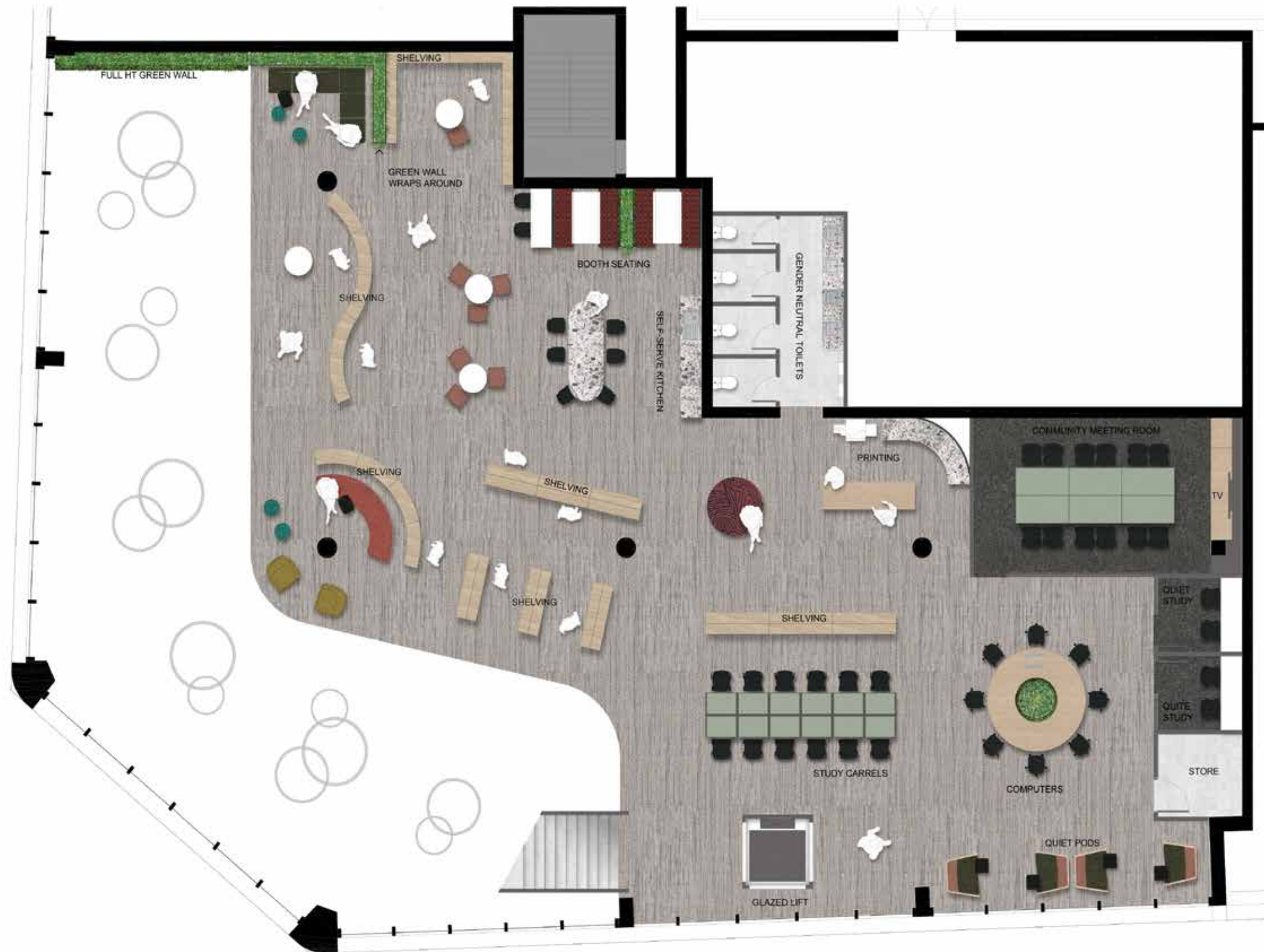
Highly acoustically treated recording suites Showing a striling colourful statement form the street



DESIGN

KNOWLEDGE HUB MEZZANINE

plus



DESIGN

KNOWLEDGE HUB MEZZANINE

GREEN WALL

Biophilia design to foster wellness and a sense of calm



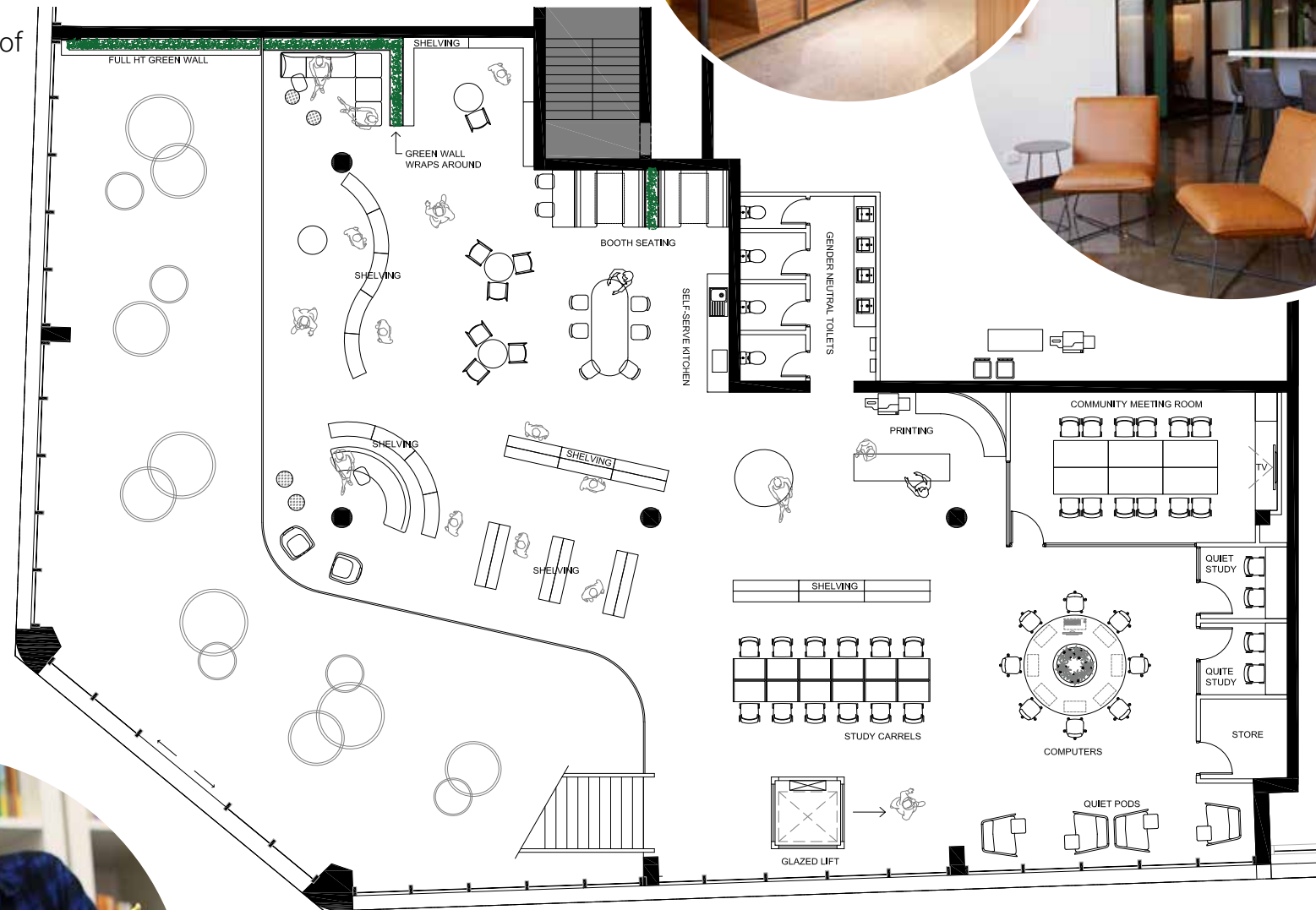
LIGHTING

Pendants hanging through the void to enhance the sense of space



FACILITIES

Kitchen and breakout area to make drinks and catch up



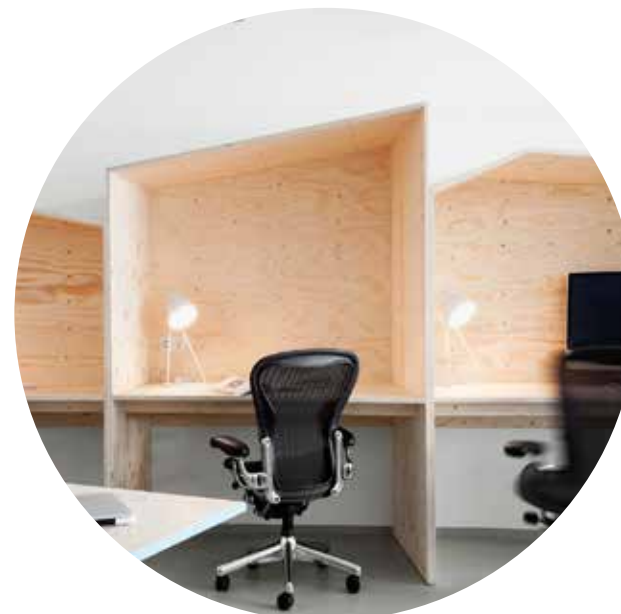
READING

A variety of spaces in which to quietly read and relax



STUDY

Quiet study pods



4.

LOT 7020 KNOWLEDGE HUB

3D VISUALISATIONS

VISUALISATION

EXTERIOR

plus



VISUALISATION

INTERIOR

plus



VISUALISATION

INTERIOR

plus



VISUALISATION

INTERIOR

plus



VISUALISATION

INTERIOR

plus



5.

LOT 7020

ARTS EXPANSION

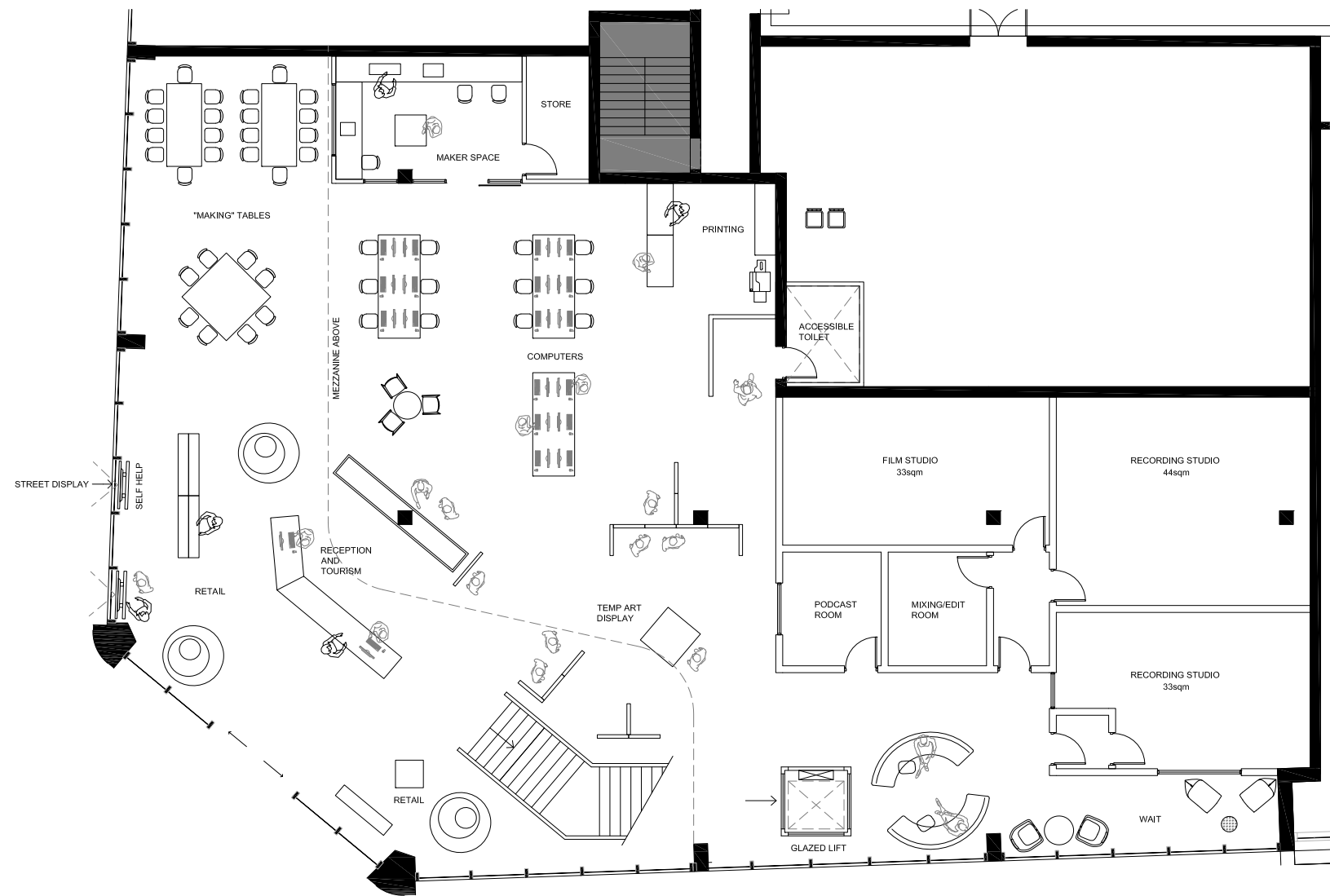
DESIGN

ARTS EXPANSION GROUND FLOOR



DESIGN

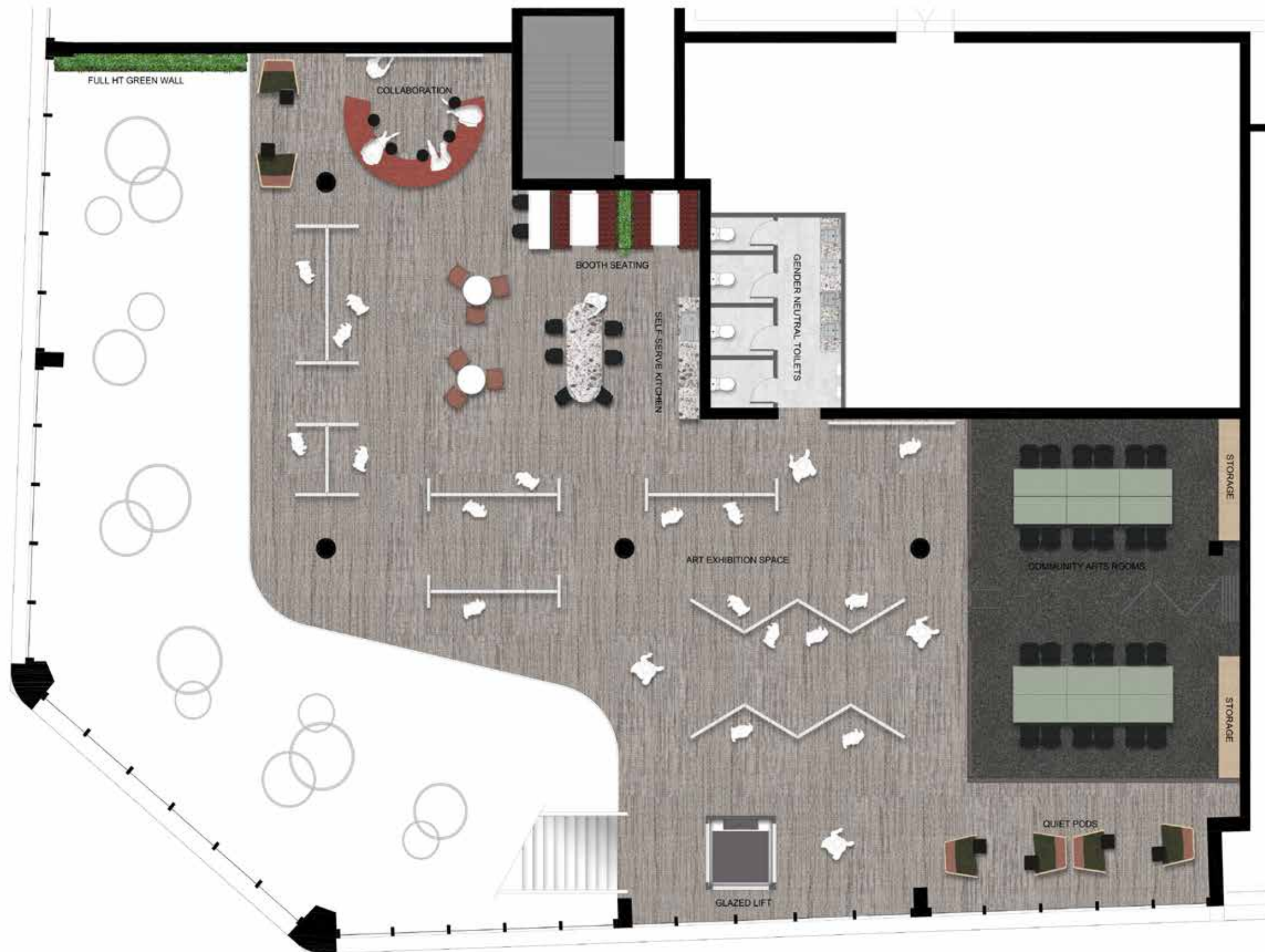
ARTS EXPANSION GROUND FLOOR



DESIGN

ARTS EXPANSION MEZZANINE

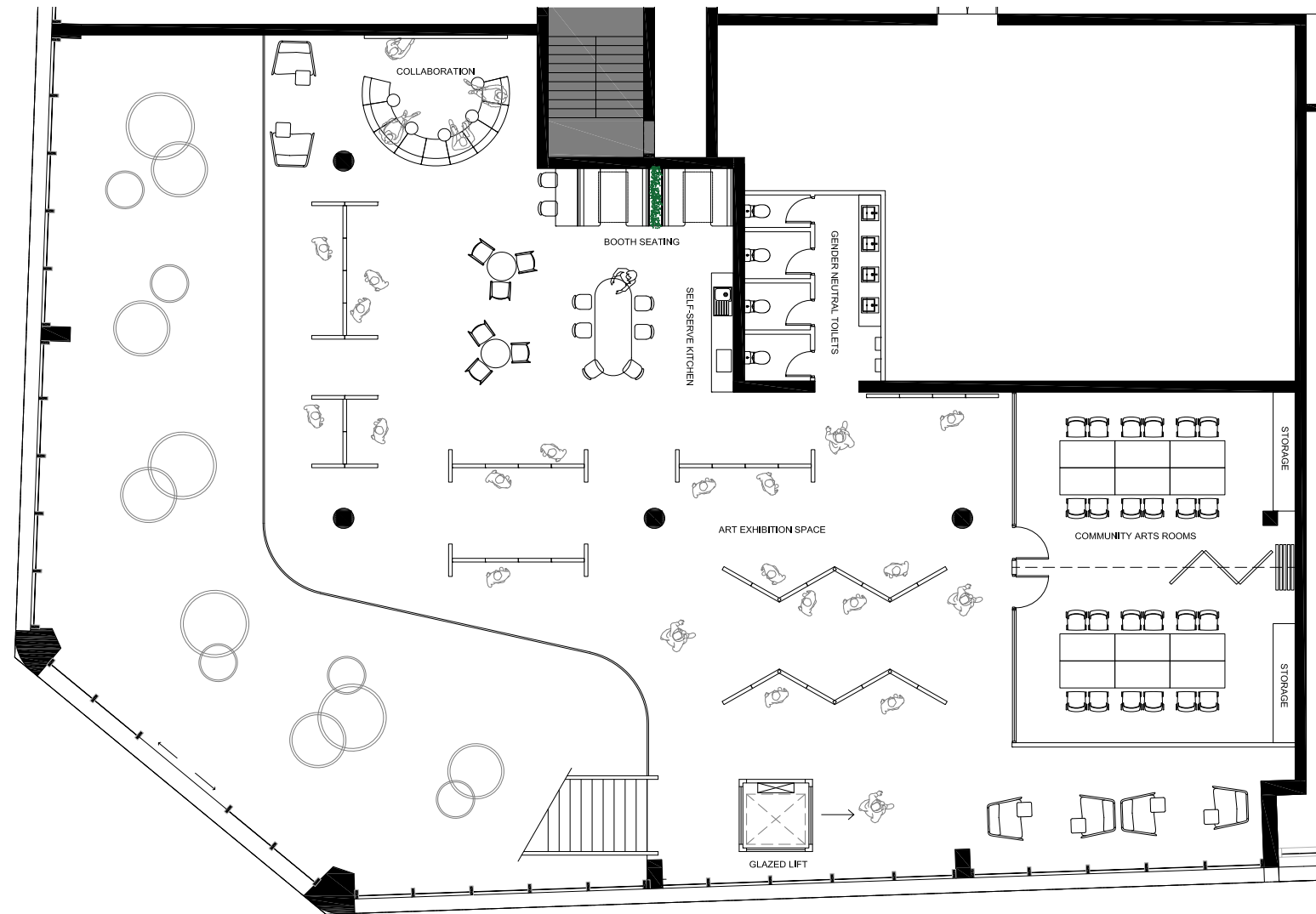
plus



DESIGN

ARTS EXPANSION MEZZANINE

plus

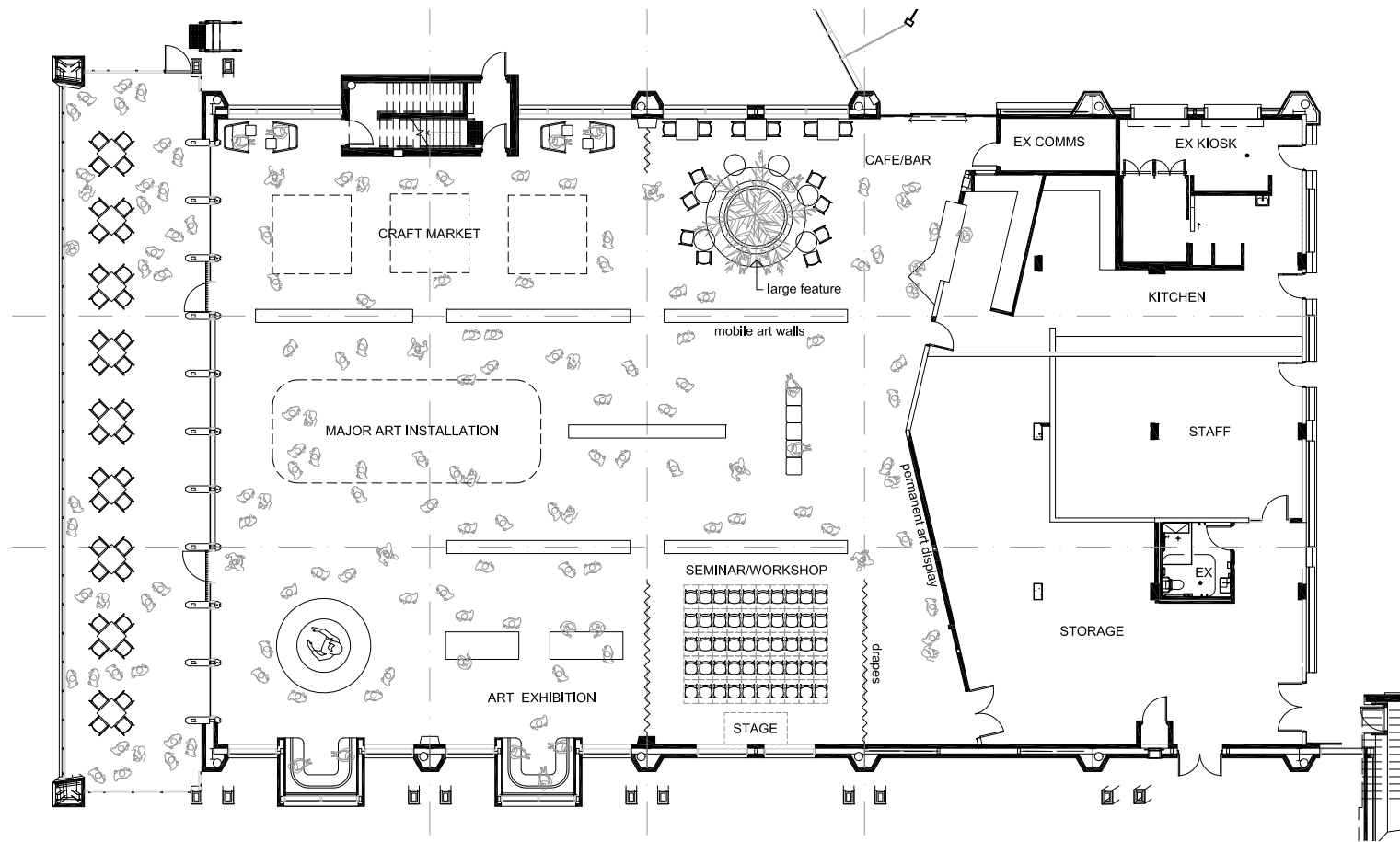


6.

SUMMARY

SUMMARY

OPTION 1 - KNOWLEDGE HUB

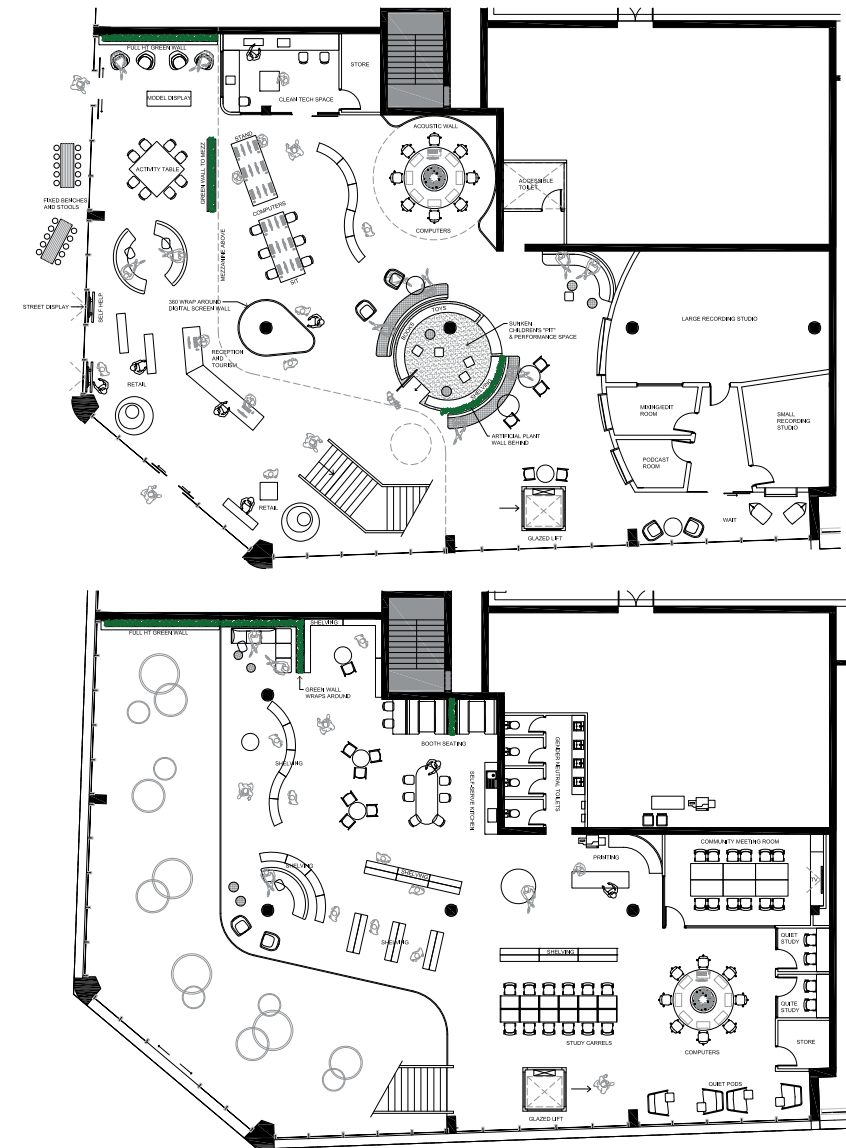


STRENGTHS REAP

- The space becomes fully utilised and activated, and lives up to its potential
- Opportunity for constant engagement with the community
- Greater opportunity for daily social gatherings
- Offers a space for major exhibitions not currently available
- Offers space for banquet gatherings not currently available
- Incredibly flexible in what types of events can be held

WEAKNESSES REAP

- People are used to using the REAP for a library
- Capital costs incurred to convert for alternative uses



STRENGTHS LOT 7020

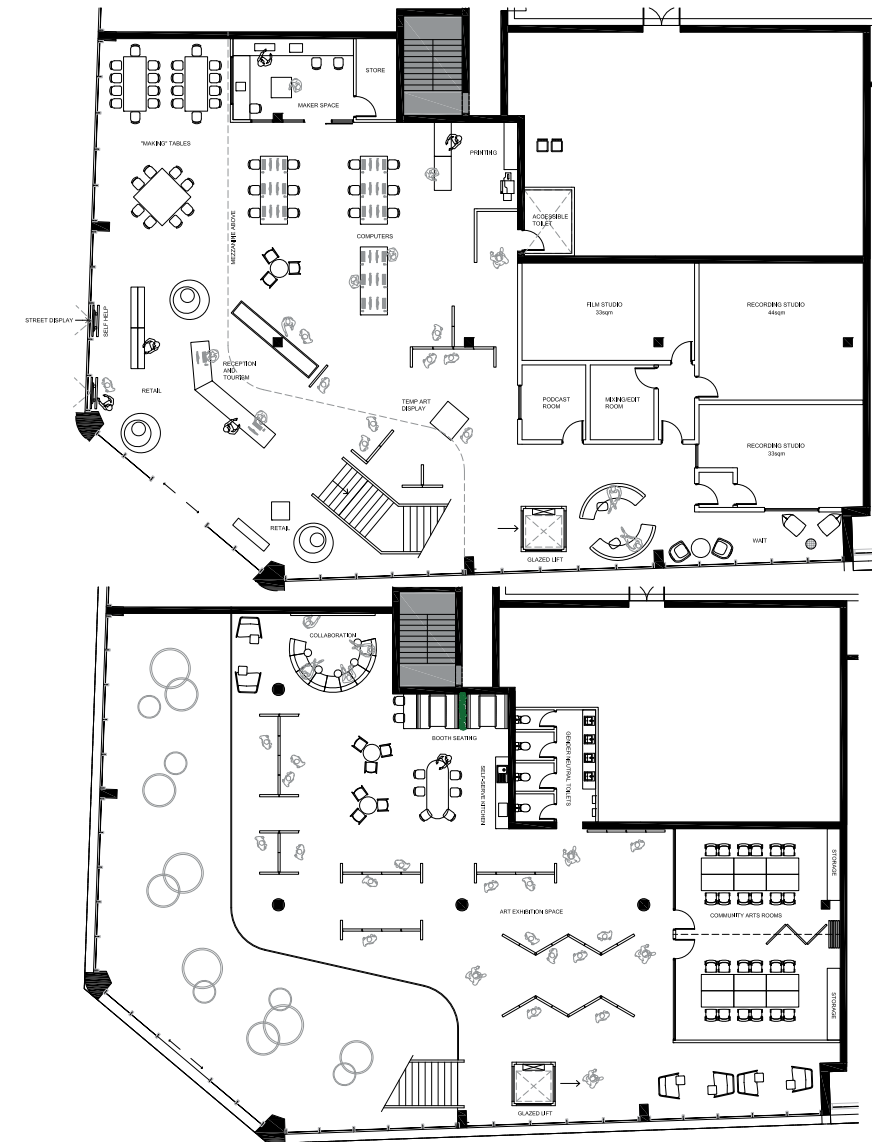
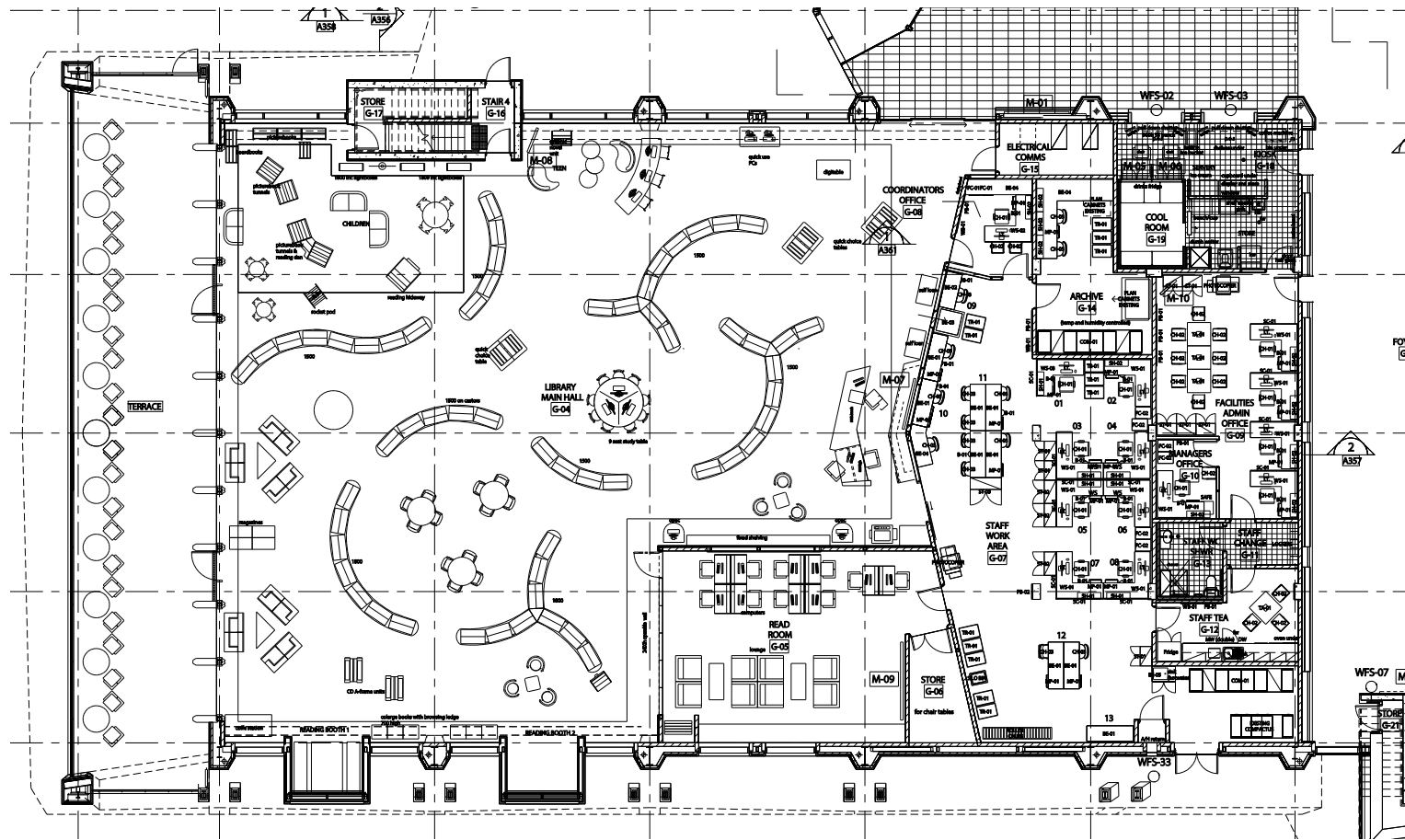
- Redefines how the City expresses itself in an holistic way
- Better visibility for services such as the visitor centre
- An extensive variety of diverse services offered
- Will appeal to a much wider section of the community
- The space is vibrant and energising

WEAKNESSES LOT 7020

- Perception that some traditional library services are being lost
- Toilet facilities currently fall outside the current NLA but can be viewed as core building services.

SUMMARY

OPTION 2 - ARTS EXPANSION



STRENGTHS REAP

- No change to the library
- No capital outlay
- No disruption

WEAKNESSES REAP

- The space is underutilised considering it's volume and aspect
- No exhibition space
- No function space
- No increase in library offerings

STRENGTHS LOT 7020

- Stand-alone construction project
- Less capital outlay

WEAKNESSES LOT 7020

- Too many services in a small space
- Large amount of built-in spaces
- No storage facilities for changing out art exhibitions
- Only small exhibitions capable of being hosted
- No food facilities
- Not as dynamic and engaging an offering as Option 1
- Including the art display limits functionality on the mezzanine

Disclaimer:
Plus Architecture Western Australia Pty. Ltd. ACN 618 393 338

In accepting and utilising any drawings or other data on any form of electronic media generated and provided by Plus Architecture the recipient covenants and agrees that all such drawings and data are instruments of service of Plus Architecture.

Plus Architecture shall be deemed the author of the drawings and data and shall retain all common law, statutory law and other rights, including copyrights.

The recipient agrees not to use these drawings and data, whole or in part, for any purpose or project other than the project which is the subject of this transmission.

The recipient is responsible for verifying that the information contained in this electronic data transfer is free of electronic error and virus.

Plus Architecture make no representation or warranty in respect of the correctness of information contained on the data file and excludes all warranties to the greatest extent of the law. The use of the data files are at the recipients (or any other third party users) risk.

CONTACT

Will Schofield
Director
Mob 0423 256 976

160 Beaufort Street
PO Box 8212
PERTH WA 6000
Australia

Tel 08 6500 6490
www.plusarchitecture.com.au

plus
architecture