



Communications and Stakeholder Engagement Plan and Outcomes

Roebourne Streetscape Master Plan

City of Karratha

26 January 2022



The Power of Commitment

GHD

999 Hay Street

Perth WA 6000, Australia

T 08 6222 8222 | F [Office fax] | E [Office email] | www.ghd.com

Printed date	1/26/2022 5:24:00 PM
Last saved date	26 January 2022 5:24 PM
File name	Yirramagardu Streetscape Materplan_Communications and Stakeholder Engagement Plan and Outcomes_A
Author	Katelin Smith, Mary Papachristos
Project manager	Ian Pexton
Client name	City of Karratha
Project name	Roebourne Streetscape Master Plan
Document title	Communications and Stakeholder Engagement Plan and Outcomes Roebourne Streetscape Master Plan
Revision version	Rev [A]
Project number	12548439

Document status

Status Code	Revision	Author	Reviewer		Approved for issue		
			Name	Signature	Name	Signature	Date
	00	Katelin Smith,	Mary Papachristos		Ian Pexton		10.06.2021
	01	Katelin Smith,	Mary Papachristos		Ian Pexton		29.07.2021
	02	Katelin Smith,	Mary Papachristos		Ian Pexton		26.01.2022

© GHD 2022

This document is and shall remain the property of GHD. The document may only be used for the purpose for which it was commissioned and in accordance with the Terms of Engagement for the commission. Unauthorised use of this document in any form whatsoever is prohibited.

Contents

1.	Introduction	3
1.1	Project background	3
1.2	Scope and limitations	3
1.3	Assumptions	3
2.	Communication and Stakeholder Engagement Plan	4
2.1	Purpose of this plan	4
2.2	Objective of this Plan	4
2.3	Principles of engagement	4
2.4	Local Context	5
2.5	Initial Engagement	6
3.	Stakeholder Identification and Classification	6
4.	Engagement Plan	1
4.1	Project Risks (stakeholder & community related)	1
5.	Communication Plan	2
5.1	Communication timeline	2
6.	Key messages	3
6.1	Project overview/ narrative	3
7.	Protocols	4
7.1	Approach to consultation and communication	4
7.2	Communication protocol	4
7.3	COVID-19 protocols	4
8.	Community Consultation	5
8.1	Community Visioning Session 1 Outline	5
8.2	City of Karratha Community Visioning Sessions	6
8.2.1	Val and Kathy's Crafty Kitchen – 23 rd November 2021	6
8.2.2	Ngarluma Yindjibarndi Foundation Limited – 26th November 2021	6
8.2.3	Yinja-Barni Art Group – 26th November 2021	6
8.2.4	6718 Yandi for Change – Elders Council Meeting – 1st December 2021	6
8.2.5	Cheeditha Art Group – 7th December 2021	6
8.2.6	Ngarliyarndu Bindirri Aboriginal Corporation – 20th December 2021	6
8.3	Community Visioning Outcomes and feedback	7
8.3.1	Community Session One, Andover Park	7
8.3.2	Community Session Two, Val and Kathy's Crafty Kitchen	8
8.3.3	Community Session Three, Ngarluma Yindjibarndi Foundation Limited	9
8.3.4	Community Session Four, Yinja-Barni Art Group	9
8.3.5	Community Session Five, 6718 Yandi for Change – Elders Council Meeting	10
8.3.6	Community Session Six, Cheeditha Art Group	11
8.3.7	Community Session Seven, Ngarliyarndu Bindirri Aboriginal Corporation	12
9.	Conclusion and next steps	13
10.	Appendix	14
10.1	Registration_Community Session One	

- 10.2 Roebourne Streetscape Masterplan Flyer_ V2
- 10.3 Stakeholder engagement session one markups
- 10.4 Stakeholder engagement session one comments written on the visual documents provided at the session
- 10.5 City of Karratha Community Consultation notes and markups

Figure index

Figure 1 Stakeholder Interest and Influence Matrix

Appendices

1. Registration_Community Session One
2. Roebourne Streetscape Masterplan Flyer_ V2
3. Stakeholder engagement session one markups
4. City of Karratha Community Consultation notes and markups

1. Introduction

1.1 Project background

The Roebourne Structure Plan was prepared by the City of Karratha in 2014, to provide an overarching framework for the revitalisation and future development of the town. The Plan was developed to guide the future land use and layout of potential development areas.

In February 2019, the City of Karratha and Department of Communities engaged a consultant to review the current level of community service provision and suitability of the existing facilities within Roebourne to support these services. The project also assessed what facilities would be required to meet the future needs of the community. Extensive consultation was undertaken as part of this project, with a report presented to council in January 2020 detailing several recommendations. A number of recommendations including options for town beatification master planning, integration of the Ngurin (Harding) River with Roe Street and increasing amenity in the main street were selected by City of Karratha to be addressed through the development of the Roebourne Streetscape Masterplan.

In May 2021, GHDWoodhead were engaged by the City of Karratha, to develop the Roebourne Streetscape Masterplan for Sholl Street and North West Coastal Highway.

In June 2021, GHDWoodhead undertook an open community consultation session at Andover Park, the outcomes from this session and markups are included in the report.

In November and December 2021, the City of Karratha undertook six community consultation sessions at Val and Kathy's Crafty Kitchen, Ngarluma Yindjibarndi Foundation Limited, Yinja-Barni Art Group, 6718 Yandi for Change – Elders Council Meeting, Cheeditha Art Group and the Ngarliyarndu Bindirri Aboriginal Corporation. The outcomes from this session and markups are included in the report.

1.2 Scope and limitations

This report: has been prepared by GHD for City of Karratha and may only be used and relied on by City of Karratha for the purpose agreed between GHD and City of Karratha as set out in section 2 of this report.

GHD otherwise disclaims responsibility to any person other than City of Karratha arising in connection with this report. GHD also excludes implied warranties and conditions, to the extent legally permissible.

The services undertaken by GHD in connection with preparing this report were limited to those specifically detailed in the report and are subject to the scope limitations set out in the report.

The opinions, conclusions and any recommendations in this report are based on conditions encountered and information reviewed at the date of preparation of the report. GHD has no responsibility or obligation to update this report to account for events or changes occurring subsequent to the date that the report was prepared.

The opinions, conclusions and any recommendations in this report are based on assumptions made by GHD described in this report. GHD disclaims liability arising from any of the assumptions being incorrect.

1.3 Assumptions

GHD has prepared this Community and Stakeholder Engagement Plan on the basis of publicly available information, information provided by City of Karratha and others who provided information to GHD (including Government authorities), which GHD has not independently verified or checked beyond the agreed scope of work. GHD does not accept liability in connection with such unverified information, including errors and omissions in the Community and Stakeholder Engagement Plan which were caused by errors or omissions in that information.

2. Communication and Stakeholder Engagement Plan

2.1 Purpose of this plan

GHDWoodhead has been engaged by the City of Karratha to establish a Streetscape Masterplan for a select area in Roebourne, Western Australia. There is an increasing expectation that Aboriginal and Torres Strait Islander cultural values are incorporated into planning considerations. By understanding the Aboriginal community in Roebourne sensitivities can be identified and managed, and Aboriginal culture can be acknowledged and celebrated through the streetscape project.

The aim of this Communication and Stakeholder Engagement Plan (CSEP) is to outline the engagement activities that will be undertaken to support the Roebourne Streetscape Masterplan.

2.2 Objective of this Plan

This CSEP will be used by the project team to manage communication and engagement activities. Underpinning the key objectives is an aim to provide best practice consultation. The key objectives of the consultation activities are to:

- Identify stakeholder groups and understand their interest in, and potential contribution toward the Masterplan
- Ensure that relevant stakeholders are informed about the project and are given the opportunity to provide feedback
- Provide stakeholders with an opportunity to ask questions and to identify areas of concern with respect to the project
- Be clear about the scope of the Project and how stakeholder input will be incorporated and/or used to inform the Masterplan
- Agree and implement protocols to manage the engagement process in accordance with City of Karratha's expectations, including agreed points of contact
- Effectively and proactively identify and manage issues
- Keep accurate records of engagement with stakeholders

2.3 Principles of engagement

Engagement will be driven by leading practice principles for engagement with Aboriginal communities, including:

Planned and collaborative: Key stakeholders are involved early and often, and activities are tailored to each audience.

Respect and cultural competence: Our team understands the importance of cultural competency and how to build respect with communities. We will also ensure we have both male and female engagement team members as required, to allow for cultural sensitivities around gender-specific information sharing.

Inclusive and diverse: All Stakeholders are invited to take part. Activities are tailored to the needs of different groups, and multiple perspectives/voices are sought and embraced.

Flexible and adaptive: We will use a range of techniques and tools that are responsive to Aboriginal communication styles and seeks to be inclusive of all stakeholders. Continual monitoring of and response to community requests, regular review of messages/timelines, and continual discussion around issues/opportunities.

Visual and engaging content: Art and visual storytelling is an integral aspect of Aboriginal cultural and communication styles. Our engagement approach builds off this principle by using visual tools to prompt

conversation, storytelling, and sharing. Using visual tools allows for the engagement to be accessible across demographics and makes conversations interactive and interesting.

Genuine tone and story-telling approach: Tone used reflects genuine commitment to transparency and listening. Use of a 'story-telling' style (no technical jargon) that brings people on the journey, and participant perspectives are shared (reflections and quotes).

2.4 Local Context

Roebourne is located near the Pilbara coast, approximately 1500 km north of Perth and 40 kilometers east of Karratha. The City of Karratha, formerly known as the Shire of Roebourne, encompasses the towns of Karratha, Dampier, Roebourne, Point Samson and Wickham.

According to the 2016 Census, there were 981 people living in the State suburb of Roebourne (SSC). Of these 57.4% were male and 42.6% were female. 75.8% of the population is made up of Aboriginal and/or Torres Strait Islander people. The median age was 32 years.

Roebourne land falls within the boundaries of the Ngarluma people. This land is from the Maitland River area and covers approximately 6,400 sq km. In the 1930's, neighbouring language groups were moved onto a Reserve in Roebourne. These language groups include the Yindjibarndi, Bunjima, Gurrama and Marduthunia. All five language groups still currently live in Roebourne.

The dominate language group in Roebourne are the Yindjibarndi. Languages other than English spoken at home are Yindjibarndi 26.8%, Ngarluma 1.3%, Banyjima 1.1%, Martu Wangka 0.5% and Maori (New Zealand) 0.5%.

2.5 Initial Engagement

During the site visit on 1 – 2 June 2021 by GHDWoodhead personnel, initial engagement in the form of one-on-one meetings was undertaken with City of Karratha identified key stakeholders to assist in informing Stage One and stage two of the project. Stakeholders/Organisations met with included:

- Val and Kathy's Crafty Kitchen
- 6718 Yandi for Change
- City of Karratha
- Roebourne Police
- Ngaliyarndu Bindirri Aboriginal Corporation
- Mawarnkarra Health Service
- Yaandina Community Services and
- Big Art
- Old Goal

All stakeholders spoken with expressed support for the project and an demonstrated a genuine interest to be involved in the design and use of the project area. It should be noted that not all language groups had been spoke with during the site visit.

3. Stakeholder Identification and Classification

A stakeholder is any individual, group or organisation that may be impacted by or have an interest in the project. A high-level stakeholder and issues analysis has been undertaken to bring structure and rigour to the communication process. An understanding of key stakeholders and potential issues enables a more proactive approach to consultation and engagement through:

- Anticipating possible stakeholder involvement in terms of interest and influence
- Developing tailored and relevant engagement and communications
- Preparing for identified and emerging issues
- Tailoring of the consultation approach, format and content to relevant stakeholder groups and individuals

The stakeholder analysis (Table 1) was developed using a desktop approach to understand key project stakeholders, their perceived level of interest and influence and analyses their likely areas of interest in the project.

The stakeholder landscape is constantly evolving and changing, and the individual stakeholders and/or issues identified today may change during the project. The project team will continue to gather intelligence and identify emerging issues throughout the life of the project. These insights will be used to hone engagement activities.

The level of influence is determined by the stakeholder group's position in the community, political influence and/or their attitude to Project specific issues. The interest and influence rankings are then used to determine the potential involvement for each stakeholder group.

Table 1 Stakeholder Analysis

Stakeholder Group	Stakeholder	Key drivers/Interests related to the Project	Level of Interest	Level of Influence	Potential level of involvement
State Government Agencies	Roebourne Police	Traffic safety Community safety issues Pedestrian Safety Road Safety	Medium	Medium	Consult
	Department of Primary Industries and Regional Development	Future Development Tourism opportunities	Low	Low	Inform
	Roebourne Volunteer Fire & Rescue Service (DFES)	Access Movement corridors Road Safety	Low	Low	Inform
Local Government	City of Karratha	Town identity Public Artwork Signage Streetscape quality Traffic safety Community safety issues Pedestrian Safety Road Safety	High	High	Involve
Care /Health providers	Yaandina Community Services	Community safety issues Pedestrian Safety	Medium	Medium	Consult
	Gurlu Gurlu Maya Child and Parent Centre	Community safety issues Pedestrian Safety	Medium	Medium	Consult

Stakeholder Group	Stakeholder	Key drivers/Interests related to the Project	Level of Interest	Level of Influence	Potential level of involvement
	Mawarnkarra Health Service	Community safety issues Pedestrian Safety	Medium	Medium	Consult
	Roebourne Strong Women's Group	Community safety issues Pedestrian Safety Connection to culture	Medium	Medium	Consult
Youth Service providers	Roebourne PCYC	Youth services and after school care Community safety issues Pedestrian Safety Amenity	High	Medium	Consult
	Yaandina Community Services	Community safety issues Amenity	High	Medium	Consult
Local businesses	Val and Kathy's Crafty Kitchen	Connection to culture Town identity Public Artwork Amenity	High	Medium	Consult
	Juluwarlu Art Group	Connection to culture Town identity Public Artwork Amenity	High	Medium	Consult
	Ganalilli Centre	Amenity	High	Medium	Consult
	Wangaba Roebourne Art Group	Amenity Connection to culture Town identity Public Artwork	High	Medium	Consult

Stakeholder Group	Stakeholder	Key drivers/Interests related to the Project	Level of Interest	Level of Influence	Potential level of involvement
	Ieramagardu Store (Roebourne Store)	Amenity Signage Streetscape quality	Medium	Medium	Consult
	Yinja Barni Art Group	Amenity Connection to culture Town identity Public Artwork	High	Medium	Consult
	Big Art	Amenity Connection to culture Town identity Public Artwork	High	Medium	Consult
	Garlbagu	Amenity Connection to culture Town identity Public Artwork Future Development Tourism opportunities	Medium	Medium	Consult
	Red Dirt Driving Academy	Road Safety Movement corridors Signage	Medium	Medium	Consult
	BP	Signage Pedestrian Safety Access	Medium	Medium	Involve
	Roebourne Visitor Centre & Old Gaol Museum	Connection to culture Town identity Public Artwork Tourism opportunities	Medium	Medium	Involve

Stakeholder Group	Stakeholder	Key drivers/Interests related to the Project	Level of Interest	Level of Influence	Potential level of involvement
Community Groups	6718 Yandi for Change	Connection to culture Town identity Public Artwork Safety Issues Streetscape quality Linkages to natural assets Amenity	High	Medium	Consult
Traditional Owner	Ngarluma Aboriginal Corporation	Connection to culture Town identity Public Artwork Community safety issues Streetscape quality Linkages to natural assets Amenity	High	High	Consult
Aboriginal Corporations/Foundations	Yindjibarndi Aboriginal Corporation	Connection to culture Public Artwork Community safety issues Amenity	High	High	Consult
	Ngarluma Yindjibarndi Foundation Limited	Connection to culture Public Artwork Community safety issues Amenity	High	High	Consult
	Ngaliyarndu Bindirri Aboriginal Corporation	Connection to culture Public Artwork Community safety issues Amenity	High	High	Consult
Media	Ngaarda Media	Streetscape quality Amenity Community safety issues Tourism opportunities	High	High	Consult

Stakeholder Group	Stakeholder	Key drivers/Interests related to the Project	Level of Interest	Level of Influence	Potential level of involvement
Peak Bodies / Foundations/ Organisations	Pilbara Development Commission	Future Development Tourism opportunities	Medium	Low	Inform
	Regional Arts WA	Public Artwork Funding	Low	Low	Inform
	The Foundation for Rural & Regional Renewal	Funding Town identity Amenity	Low	Low	Inform
General Community	Wider community	Connection to culture Town identity Public Artwork Signage Streetscape quality Linkages to natural assets Amenity Pedestrian Safety Road Safety Community safety issues Tourism opportunities	Medium	Medium	Involve
Schools	Roebourne District High School – Ngurrawaana Campus	Community safety issues Pedestrian Safety Amenity Signage	High	Medium	Consult

4. Engagement Plan

The engagement program will principally focus on:

- Raising community and stakeholder awareness of the project scope and benefits
- Engaging key stakeholders and the community to identify any issues, concerns and preferences that may alter the Streetscape Master Plan
- Providing information in a manner that was timely, objective, meaningful, relevant, supported community participation and was accessible
- Seeking community and stakeholder acceptance of the final Streetscape Master Plan

Table 2 Engagement Plan

Project Stage	Engagement Method/s	Engagement Purpose	Stakeholders	Level of Engagement
Stage One – Investigation, Site Appraisal and Zoning	<i>Informal one-on-one/small groups 'Meet and Greet's'</i>	<ul style="list-style-type: none"> • Provide project information • Identify level of interest • Seek community buy-in • Gauge community feeling • Determine appropriate time/place for engagement 	<ul style="list-style-type: none"> • Targeted Stakeholders 	<i>Involve</i>
Stage Two – Community Engagement 23/6/2021	<i>Community Visioning Engagement Session 1 Conversations and input style event in an open area setting</i>	<ul style="list-style-type: none"> • Provide all stakeholders with project information and the remit • Develop rapport with community and stakeholders to share their stories • Seek community ideas for Roebourne Streetscape Masterplan • Identify any emerging issues/areas for concern • Identify opportunities 	<ul style="list-style-type: none"> • Wider Community • Local Businesses/Main Street Residents 	<i>Involve/Consult</i>
Stage Two –CoK Community Engagement	<i>Community Visioning Engagement Session 1 Conversations and input style event in an open area setting</i>	<ul style="list-style-type: none"> • Provide all stakeholders with project information and the remit • stories • Seek community ideas for Roebourne Streetscape Masterplan 	<ul style="list-style-type: none"> • Val and Kathy's Crafty Kitchen • Ngarluma Yindjibarndi Foundation Limited • Yinja-Barni Art Group 	<i>Involve/Consult</i>

		<ul style="list-style-type: none"> Identify any emerging issues/areas for concern Identify opportunities 	<ul style="list-style-type: none"> 6718 Yandi for Change – Elders Council Meeting Cheeditha Art Group and the Ngarliyarndu Bindirri Aboriginal Corporation 	
Stage Four – Street Scape Options Development TBC	<i>Public Display</i>	<ul style="list-style-type: none"> Allow community to feedback on draft masterplan Ensuring Masterplan meet community expectation 	<ul style="list-style-type: none"> Key Stakeholders Wider Community Local Businesses/Main Street Residences 	<i>Inform</i>

4.1 Project Risks (stakeholder & community related)

The following table (Table 3) describes identifies key risks associated with the stakeholder engagement for the Project and explains the mitigation strategies that have been put in place to manage the risk.

The following stakeholder risks have been identified for the project.

Table 3 Risk Assessment

Risk Event	Mitigation Strategies
Community expectations are not met or managed, resulting in criticism and/or project delays	<ul style="list-style-type: none">• Profile stakeholders and identify the expected areas of interest• Build strong relationships with key stakeholders to establish trust and create a clear conduit for information• Proactively manage issues
Delay or inability to meet project schedule due to delays in meeting with stakeholders	<ul style="list-style-type: none">• Identify priority stakeholders and confirm their availability to meet as early as possible to plan a productive site visit• Contact City of Karratha before embarking on engagement schedule to ensure that project milestones do not clash with other stakeholder obligations / events in the community
Dealing with direct requests for information by stakeholder	<ul style="list-style-type: none">• Ensure that all team members understand and adhere to the communication protocol in this Plan• Keep a record of Stakeholder interactions
Lack of community reach or uptake. Aboriginal stakeholders may not hear about the opportunities to engage or provide their feedback or may not feel like it is possible to do so.	<ul style="list-style-type: none">• Engagement will be targeted to key knowledge holders in the first instance• Create opportunities for wider community involvement through conversation style “open events”• Conduct 2 engagement events in order to capture the 5 language groups. The design, format and location of event 2 to be based on learnings from event 1 (23/6/2021)
Consultation fatigue and potential information overload- Some stakeholders, specifically those that have already be engaged initially may become fatigued or become overloaded with information.	<ul style="list-style-type: none">• Make efficient use of stakeholder time

5. Communication Plan

5.1 Communication timeline

The following table (Table 4) lists the communications tools that will be utilised during the course of the project. It is not an exhaustive list and is designed to offer the opportunity to tailor the engagements to particular stakeholders or contexts.

Table 4 Communication Plan

Type	Purpose	Timing	Classification
Initial Email	Used to introduce the project/ project team members, set up face to face meetings for site visit.	May 2021	Inform
Social Media – Facebook Post	Advertise community engagement for input into the Roebourne Streetscape Masterplan	June 2021	Inform
Flyer	Advertise community engagement for input into the Roebourne Streetscape Masterplan	June 2021	Inform
Visual material for engagement (Maps, Imagery etc)	Introduce the project and purpose Invite community to provide input into the Roebourne Streetscape Masterplan	June 2021	Involve
Email	Inform stakeholders about engagement occurring to provide input into the Roebourne Streetscape Masterplan	June 2021	Inform
Social Media – Facebook Post	Advertise community engagement for community to provide feedback on Roebourne Streetscape Masterplan	July 2021	Inform
Flyer	Invite community to provide feedback on draft masterplan	July 2021	Inform
Visual material for engagement session 2 (Gallery/Imagery)	Opportunity for community to provide feedback on draft masterplan	July 2021	Involve
Social Media – Facebook Post	Promote final Masterplan	TBC 2021	Inform
Flyer	Promote final Masterplan	TBC 2021	Inform

6. Key messages

A clear, consistent approach to communicating with stakeholders is a key principle of the Communications and Stakeholder Engagement Plan.

Key messages have been developed to assist those involved in stakeholder engagement, to guide the preparation of stakeholder communication materials, support discussions with stakeholders, and enable consistent and responsive communication.

6.1 Project overview/ narrative

The following key messages have been developed for the overall project and should be used by all GHD and City of Karratha project team members when engaging stakeholders:

- The purpose of the Roebourne Streetscape Masterplan design is to enhance the appearance and function of the road environment for users of the road reserve and adjacent areas.
- The project seeks to understand the places and stories of cultural significance to Traditional Owners and local Aboriginal communities living in Roebourne. This information will be used to better inform the Streetscape Masterplan and the City's commitment to the beautification program, so that cultural places, spaces and stories can be considered.
- The Masterplan will provide a planned approach to the revitalising the streetscape, creating a connection to the community, encouraging investment within the town and aims to attract travellers to the town.
- The Streetscape project is being undertaken over several of stages:
 - Stage 1 of the project involves research and preliminary consultation to understand the key stories, theme and place of significance.
 - Stage 2 Includes broad community consultation.
 - Stage 3 Involves developing three draft Streetscape Masterplan options for consideration.
 - Stage 4 Development of the detailed streetscape design
 - Stage 5 Construction documentation
- The Roebourne Streetscape Masterplan study area includes Sholl Street and Northwest Coastal Highway.
- The project aims to improve amenity throughout the town and provide a better link from Northwest Coastal highway to the Ngurin (Harding) River.
- The project is part of the City of Karratha's broader plan to increase the liveability, social wellbeing and community identity of Roebourne
- The project does not include upgrades to the oval, etc, *(remit and language/reference to other projects to be confirmed with the City)*

7. Protocols

7.1 Approach to consultation and communication

The aim of project consultation is to support the development of the Roebourne Streetscape Masterplan and, where possible, explore possible opportunities and constraints relating to the surrounding land use/ region.

All communications with stakeholders will be structured, consistent and documented.

Given the potential importance of the project to the local Roebourne community, there is a need to ensure that all communication protocols are strictly adhered to.

All project team members will be briefed on cultural

7.2 Communication protocol

At all times when communicating with stakeholders, the City of Karratha team and GHD will use key messages, materials and other responses that have been approved by City of Karratha.

The following protocol applies for written communication materials:

- All information materials will follow City of Karratha format, including the appropriate use of templates and logos;
- All information materials will be approved by City of Karratha
- All information materials will be distributed by City of Karratha, unless City of Karratha provides a request or direction for the materials to be distributed by GHD directly
- The following protocol applies for external email communication with stakeholders:
 - Approval for GHD to communicate directly with stakeholders by email will be obtained from City of Karratha prior to initiating communication
 - All external email communication with stakeholders will be copied to City of Karratha's Community Engagement Officer.

7.3 COVID-19 protocols

The project is being delivered during a time of constant change due to COVID-19. As such, the flexibility and adaptability of our engagement methodology will be key to ensuring engagement opportunities are maximised in ways that keep our team and Aboriginal stakeholders safe. Whilst travelling to Roebourne and undertaking engagement with stakeholders, GHD will be sure to follow health and safety guidelines and comply with the latest Governmental advice on COVID-19.

The majority in person engagement will be held outdoors and GHD will comply with the City of Karratha's health and sanitation guidelines including:

- Complying with caps on number of attendees.
- Hand washing, sanitising and use of SafeWA Check in.

GHD's comprehensive COVID-19 safety plans would be implemented during all engagement activities.

8. Community Consultation

8.1 Community Visioning Session 1 Outline

Method	Conversation Style (inc opportunities to interact, draw, capture ideas)		
Participants	Community Groups Identified Stakeholders City of Karratha Personnel GHD Team		
Welcome Experience	Inclusive, inviting, open, comfortable Ensure all attendees have the opportunity develop and/or further enhance rapport		
Setting	Venue Andover Park Andover Way Roebourne 4 th August 2021 From 3:00pm	Layout TBC – allow for social distance set up and open “pocket” conversation BBQ – food / drink City Trestle tables City Chairs. City City to provide HSE Event Plan City to provide QR code and register	Support Materials Visual engagement material – eg maps, imagery, items to draw on GHD Questions GHD Reference docs/ worksheets GHD Markers GHD Team Member Badges Each group to supply own
Duration	3 hours		
Rational Aim	To ensure that all participants are aware of the project, understand the project aims, understand the project scope. To understand the places and stories of cultural significance to Traditional Owners and local Aboriginal communities living in Roebourne To collect intelligence and local input to better inform the Streetscape Masterplan To identify emerging issues or concerns about the project in order to develop mitigation strategies		
Experiential Aim (how participants feel at the end)	To feel: <ul style="list-style-type: none"> the time at the event was worthwhile they have provided input to what is important to them about the project comfortable with the process 		

Session Outline		Lead	Time
Set Up	Set up according to layout & HSE Plan – make adjustments as required Team pre-event huddle/briefing	City GHD	13:30
Session Opens			15:00
Welcome	Welcome to Country / Acknowledgement of Country (TBC with the City) Housekeeping / Event Safety Introduction of Team members in attendance	City / TO City	15:15
Background / Context	Context, background – what are we doing and why are we doing it Explain format and opportunities to interact / draw / etc	GHD	15:20
Conversations and Interactions	Team members to split up <ul style="list-style-type: none"> some to mingle with Community members / stakeholders to gather insights some to stand by visual displays and engage 	GHD	15:30 – 18:00
Close & Clean up	Thank participants as they leave Clean up	GHD City	18:00 – 19:00

8.2 City of Karratha Community Visioning Sessions

8.2.1 Val and Kathy's Crafty Kitchen – 23rd November 2021

Attendees: Val Walker, Violet Samson (Senior Ngarluma Elder), Pansy Hicks (Senior Ngarluma Elder), Linda Rowlands-Daniel (Wangaba Roebourne Art Group), Christina Goodman (Wangaba Roebourne Art Group), Kim Gentle (REFAP), Sarai Cedar (REFAP), Angie Mitchell (PCLS).

8.2.2 Ngarluma Yindjibarndi Foundation Limited – 26th November 2021

Attendees: Kelly Stuart, Tenillia Lockyer

8.2.3 Yinja-Barni Art Group – 26th November 2021

Attendees: Allery Sandy, Melissa Sandy, Marlene Harold.

8.2.4 6718 Yandi for Change – Elders Council Meeting – 1st December 2021

Attendees: Elders: Pansy Sambo, Jane Cheedy, Violet Samson, Wendy Hubert, Dennis Long, Pansy Hicks, Barbara Churnside, Josie Samson.

Other: Val Ross (Department of Communities), Tristan Kempton (Department of Communities), Natasha Walker (PCYC – 6718 Gathering Team).

8.2.5 Cheeditha Art Group – 7th December 2021

Attendees: Carrie McDowell (Manager), Rose Barton (Art Worker), Kaye Warrie, Wendy Warrie.

8.2.6 Ngarliyarndu Bindirri Aboriginal Corporation – 20th December 2021

Attendees: Amelia Scheele and Nellie Connors

8.3 Community Visioning Outcomes and feedback

8.3.1 Community Session One, Andover Park

Date: 4th of August 2021

Outcomes:

Traffic and Safety

1. Allow for safe pedestrian access along Roe Street to the river that is separated from the street
2. Any planting on street to allow for visibility and child safety
3. Slow traffic down through the implementation of the proposed measures (eg pedestrian crossing, wombat crossing, mini roundabout, etc)
4. Allow for safe pedestrian access across the highway along the entire route
5. Connect Sampson bus stop with the residential area with a safe pedestrian crossing and footpath
6. Consider moving Sampson bus
7. Allow for caravan parking along main street
8. Create a 40km hr zone along Roe Street
9. Slow traffic down on Sholl street
10. Widen parking bays along Roe Street to ensure vehicle wing mirrors are not damaged
11. Create truck pull in bay opposite BP
12. Allow for cross overs at the residential properties situated on Roe Street
13. Creating more off-street parking in town

Streetscape Treatment and Amenities

1. Create a cool shady town by planting more trees
2. More trees in the residential area of town, Has a street tree master plan been created?
3. Connect the river to the Town Centre and places of interest allowing safe access for the community and visitors
4. Allow for the reinstatement of the river (or explore the option to release water into the river from the dam to ensure a constant water supply)
5. Remove existing eucalyptus trees in the central median of Roe Street
6. Increase shade structures to provide shading and protection around town
7. Increase/more softscape planting to beautify appearance
8. Include interpretive art and messages withing pavement and furniture
9. Incorporate artwork on building façades
10. Create seating along river so that families can enjoy the landscape
11. Some seating or open places to sit in main Town area – “place to have a yarn”
12. Green up central median and make visually appealing
13. Remove existing creeper in central median and replace with plants and flowers
14. Positive reaction to proposed entrance sign at the bridge site and southern entrance to town (name to be confirmed)

Community Connection

1. Recognise the original general store, the bakery and any associated stories
2. Recognise the Old Reserve and provide amenity at the site for family functions
3. Recognise the art and artists of the Town
4. Incorporate/use local art in streetscape and
5. Create a cultural hub similar to the City of Karratha
6. Connect the Town Centre with river and current walk trails to encourage people to stop in Roebourne
7. Significance of the river – “it was a place where the women went. A lot of children were born there...I saw my mother give birth to my sister on the bank”

Sensitivities and Perceptions

1. Explore indigenous name of for Roebourne that is acceptable by the community – different spellings, different levels of attachment
2. Old Gaol – should be recognised but not “celebrated”. ie make it safe for people to walk through but do not spend money on repairing it...“it was a bad place”
3. Need to understand the cultural differences between the language groups and how this can be represented in the Town

8.3.2 Community Session Two, Val and Kathy’s Crafty Kitchen

Date: 23rd November 2021

Outcomes:

1. Plant lawn in the median strip, instead of ‘mile-a-minute’ (Dampier Pea).
2. Remove the Dampier Pea from the medium strip because it grows everywhere and best suited to the beaches not the main strip of Roebourne.
3. More rubbish bins.
4. More recognition of the people who grew up on the ‘Old Reserve’.
5. Add seating in the median strip.
6. Add seating along the bush-tucker trail – use wooden park benches instead of aluminum seats, as the aluminum gets too hot. Add shade over seating.
7. Add lighting at Jubilee Park – so that tourists passing through can stop and use the toilet at night.
8. Add a water re-fill station for caravans to the main street. The one at the Ganalili Centre has gone. Consider an ‘honesty box’ for water use as a contribution to the community.
9. Water fountain with a dog bowl along the main street – for tourists.
10. The Memorial on Roe St is important to the community because it is a good reminder of those people who fought for us.
11. Retain eucalyptus trees in the median strip on Roe St – they provide good shade and have withstood vandalism to trees / plants.
12. Plant wattle trees – the flowers will help brighten the streets.
13. Correct spelling of Roebourne in Ngarluma language is ‘Yirramagardu’. Confirmed by Pansy Hicks.
14. Sign at both entrances to town should acknowledge that we are on Ngarluma Country. Wangaba Roebourne Art Group have been contracted to provide signage for Cape Lambert acknowledging this.
15. Build a lookout from the Jubilee Park blue metal carpark so that people can get a better view of the river. Accessible for the elders from Roe St and the carpark.

16. Replace the signs on the bush tucker trail – all faded.
17. Ensure the bush tucker trail is accessible for all – currently steep, slippery and loose gravel (see photo of start of trail).
18. CCTV on the bush tucker trail / Jubilee Park.

8.3.3 Community Session Three, Ngarluma Yindjibarndi Foundation Limited

Date: 26th November 2021

Outcomes:

1. Proposed Pedestrian Crossing 1; trucks go too fast past Andover Park. Consider moving closer to the bus stop, as it currently crosses into nothing. There is no path for people to cross to.
2. There is a gully that people use to cross the road to the bus stop (marked on pdf).
3. Proposed Pedestrian Crossing 2: crossing into nothing from the BP.
4. Plant natives, they are hardier.
5. More trees.
6. Scatter signage around town that includes both English and Ngarluma language, for tourists.
7. Not keen on seating in the median strip – could be a safety issue for children. But feel seating could go at the War Memorial.
8. Mound planting looks nice.
9. Bus stop on Padbury Street = very popular. Could do with some more seating along this street for people waiting for the bus. Could create a nice waiting space with planting and shade.
10. Board walk at river – great idea, but be conscious of flooding. Flood waters have taken out poles near the small bridge in the past. Water has come up to the old house near the Ngurin Centre before.
11. Kelly to check if the project could be presented at the upcoming NYFL board meeting (week of 29th of Nov).
- 12.

8.3.4 Community Session Four, Yinja-Barni Art Group

Date: 26th November 2021

Outcomes:

1. Likes the mound planting.
2. Likes the proposed central median planting; use wildflowers, like desert peas and mulla-mulla.
3. No references to 'Marga' (Ancestral Beings) in any art. Some of the old people don't go into the Ganalili because of the Marga statues.
4. Include planting like the airport entrance.
5. More seating and shade.
6. BBQ at Jubilee Park.
7. Notice board in town. (note – there is a notice board at the Post Office).
8. Flag poles along the median – allow people to use them to display flags that promote events. I.e. 'Songs for Peace'.

9. Something for young kids at Jubilee Park – like a slide.
10. Shade sails at Jubilee Park.
11. More shade at Jubilee Park so people can have meetings. Lost shade when the Tamarix trees were removed.
12. Uses hedgy plants to create a wind break at Jubilee Park.
13. Paperbark trees = used for shoes, Snakewood trees = used for boomerangs and makes good firewood.
14. Plant bush medicine.
15. Have a place where we plant one tree of importance from each of the main language groups. 1 x tree for Ngarluma, 1 x tree for Yindjibarndi, 1 x tree for Banyjima. The Yindjibarndi tree could be a 'Majgan' tree (Snappy Gum/Eucalyptus Leucophloia). Yindjibarndi people eat the flowers of this tree and spit out the seeds.
16. Have a map of country displayed somewhere in town.
17. Have a water fountain up the street.
18. Allery: before the caravan park was a caravan park, there used to be events held there. Football, cricket, country music and movies. Allery used to walk across from the reserve to attend. They use to walk to a house across the river to get lunch (sandwiches) – the house is still there. Allery would like to tell this story using signage or similar.

8.3.5 Community Session Five, 6718 Yandi for Change – Elders Council Meeting

Date: 1st December 2021

Outcomes:

1. Use 'Keep our Kids Safe' or similar signage to slow down traffic up the main street (Roe)
2. Fraser St – kids cross from the school (side gate) to TAFE – could use a zebra crossing**
3. Dangerous for pedestrians at the turn-off to Cheeditha**
4. More information around town on how to 'Report It'
5. Proposed pedestrian crossing treatments at Ganalili and Ngaarda Media – good locations.
6. Sturdier toilet roll holders in public toilets (stainless steel) – kids pinch the toilet roll and use it to light fires.
7. More parking at Andover Park**
8. Roundabout at the intersection on Andover Way/Hicks St, and Hicks St/Lockyer Way**
9. Signage on Lockyer Way/Andover Way that reminds people to drive slowly around Andover Park, because children cross the road to play in the park**
10. Sign on Roe St for 6718 Yandi for Change
11. More signage to show tourists how to get to the Post Office and Hospital
12. Proposed mound planting along Roe St – place boulders in-between planting to deter motorbikes for riding close to the highway. Use boulders similar to the ones at Andover Park, and those at the Wickham turn-off. The boulders could be painted, so that people can see them.

**feedback not related to scope of works, but noted anyway.

8.3.6 Community Session Six, Cheeditha Art Group

Date: 7th December 2021

Outcomes:

1. Footpaths with animals and language.
2. Ganalili Centre is working on a revised version of the book "Wanggalli" which outlines all the details of the flora in respect of the Yinjibarndi and Ngarluma culture.
3. Look at the REAP palette for the art incorporation and see what can be done in Roebourne as a similar approach – it seemed to work well there.
4. Footpath extending along Cleaverville Rd for continuity and better connection.
5. Draw on some inspiration from what they have done in Kings Park, Perth.
6. Draw on connections with all the language groups being recognized at Mt Welcome and doing similar within the town centre.
7. There are blank walls on Padbury Way that could be turned into great murals.
8. There are amazing murals in Katherine and Collie etc. which people visit the township to see these artwork pieces. Roebourne could do something similar.
9. An Art trail could be created in Roebourne, linking all the art groups and well-known artists. You could look to be strategic about it and tie it into the existing trails? This would help to revitalize the main street and link the Yinja-Barni Art Group with the others located more centrally in town.
10. Trucks are the problem in town with going too fast through the main street. Slow the trucks down!
11. The proposed traffic plan should consider extending the scope area and reducing the speed on the highway at the Cheeditha turn off to 80k/h instead of 110 km/h. This would mean traffic changing from 110 km/h to 80 km/hr to 50 km/hr.
12. There is a tree near the BP on the corner of the highway that is a hazard to traffic. Preference is to remove or make this corner safe.
13. Would like a solar light or something similar at the turn off to Cheeditha as its quite dangerous at night with slowing down to find the turn off and trucks going around the vehicle etc. Cheeditha are pursuing this, as they have had limited support from Main Roads.
14. Agree in keeping the eucalypts along Roe St median strip.
15. The Dampier Pea could be used on the mounding instead. Seems to create nice coverage generally.
16. The Information Bay would be a great site to revamp and add in extra amenities.
17. There is lots of cultural art funding through Regional Arts WA.
18. Use planter boxes on the footpath up Roe St, to create a barrier between the path and the road.
19. 40km/hour speed limit along Roe St.
20. Kids hangout at Yinja-Barni Art Centre.
21. Considering moving the war memorial to the Old Building near the Ngurin Centre (see image). ANZAC Dawn Services could be held without blocking the road.
22. Create a shady picnic area at the Old Building near the Ngurin Centre. Don't put Caravan Parking here, as this is where the Old Building is.
23. Create sculptures in the shape of trees.
24. Seek inspiration from the Katherine, NT Streetscape.
25. Pansy Hick's art – 'Stepping Stones' along the footpath to the shop/café.

26. Embed the animals that the children have created for the Ganalili Centre in the footpath. Feature their English names, and names in language.
27. Connect the colours through-out town – ie. Take inspiration for the new school's colour palette.
28. 'Proposed Intersection Safety Treatment' – people would just ignore and drive over.
29. Put a sculpture in Jubilee Park.
30. Use laser-cutting to incorporate art into shade structures.
31. There used to be paintings inside the Old Vic hotel, done by local people. Someone took photos of these before the renovation.
32. Plant mulla-mulla and desert peas in the median strip.
33. Create shady places for people to relax to music – the police have an issue with people drinking and playing music in the Old Village.
34. Use the flag poles in the median strip to display art.
35. Be cautious of flooding.
36. Use plaques to provide local info on native species.
37. Information on how to get to the Old Gaol on the main road – people don't know how to get to the Old Gaol as they turn in from Hedland.

8.3.7 Community Session Seven, Ngarliyarndu Bindirri Aboriginal Corporation

Date: 20th December 2021

Outcomes:

1. Suggested turning lanes at the following locations: Cheeditha turn-off, Point Samson-Roebourne Rd, Sholl St.
2. Nellie doesn't like the Dampier Pea in the median strip
3. Plant shady trees that don't obscure vision
4. Get rid of the Oleander Tree across from NYFL – Oleander trees are poisonous
5. Permanent flashing speed monitoring signs
6. Turning lane at NW Coastal Highway turn-off
7. Brighten-up the 150 sign pull-in bay to encourage people to stop
8. Plant more Jacaranda's and Poincianas (big trees)
9. Make the bus stops look nice – planting
10. Make sure the mound planting isn't too close to the road and doesn't obstruct vision
11. Natives can sometimes look 'scruffy' or have thorns – ie. bush hibiscus
12. More shade and nicer lawn in Jubilee Park. Add more seating.
13. Would be good to have something near the river that people can walk out onto. Just be careful of flooding. Make sure that any structures are not too close to the water, as kids might try to jump in and injure themselves.
14. Make the bush tucker trail inviting. Add railing on both sides of the little bridge. Clean up the the bridge – it's overgrown. Trim the palm trees.
15. Evening markets.

16. Plant frangipani's, kurrajongs, myringas (type of boob), jacarandas, golden shower trees and poincianas up the mainstreet – for colour.
17. Proposed truck bay opposite BP is a good idea.

9. Conclusion and next steps

The combined effort of the City and GHDWoodhead has provided valuable information that we can base the design upon and ensure the designs reflect the needs and wants of the community. Both practical and cultural information has been received and we will respect all cultural information and ensure if this is used in the concept designs approval will be sort from the community. This information also gives us greater knowledge of the community and town to ensure the design reflect a true Yirramagardu and its community.

A design briefing document will be created from the feedback from the community and three concept design will be created from this for the communities and Cities review.

10. Appendix

10.1 Registration_Community Session One

Community Session 1 Outline

	Session Outline	Lead	Time
Set Up	Set up according to CoK layout & HSE Plan – make adjustments as required Team pre-event briefing	City GHD	14:00
Session Opens			15:00
Welcome	<p>Welcome to Country / Acknowledgement of Country (TBC with the City) Housekeeping / Event Safety Introduction of Team members in attendance</p> <p><u>Talking points:</u></p> <ul style="list-style-type: none"> • Good afternoon, my name is Ian Pexton and I am a Landscape Architect from GHD working on the City of Karratha's Roebourne Streetscape Project. I am joined by my colleague, Mary Papachristos. • The aim of Roebourne Streetscape Masterplan is to enhance the appearance and function of the road environment for users of the road reserve and adjacent areas. • The project is being undertaken over several of stages. • We have completed Stage 1, which involved desktop research and a site visit to understand the project area. • We are currently in Stage 2 of the project, which is why we are here this evening. This includes community and key stakeholders to input in the early design stages of the project. 	City / TO City	15:15
Background / Context	<p>Context, background – what are we doing and why are we doing it</p> <p>Explain format and opportunities to interact / draw / etc</p> <p><u>Talking points:</u></p> <ul style="list-style-type: none"> • The study area for the Masterplan includes Sholl Street, Roe Street and Northwest Coastal Highway. • We are here today to gather local input to better inform the Streetscape Masterplan • Roebourne offers many opportunities to integrate stories and art into the town's appearance and give Pilbara locals and tourists more reasons to stop and linger in Roebourne. • We are keen to hear from you, your key stories, how you use the area and any places of significance. • Please get something to eat and let's have a yarn. • Questions to centre on: <ul style="list-style-type: none"> ○ Identity – What is Roebourne? / What do you think represents Roebourne? / What is important to you about the project area? – eg safety, environment, accessibility etc ○ increased amenity – How are streets/spaces used? / How would you like them to be use? Who uses them? – eg different uses for children, youth, elderly, tourists etc ○ design considerations – What are the colours that represent these locations? What flora, fauna, landscapes do you think are important to the community? What features do you think should be highlighted? 	GHD	15:20

Conversations and Interactions	Team members to split up <ul style="list-style-type: none"> • some to mingle with Community members / stakeholders to gather insights • some to stand by visual displays and engage 	GHD	15:30 – 18:00
Close & Clean up	Thank participants as they leave Clean up	GHD City	18:00 – 18:30 18:30 – 19:00

10.2 Roebourne Streetscape Masterplan Flyer_ V2



Yirramagardu/Roebourne Streetscape Masterplan

Yirramagardu / Roebourne Streetscape Masterplan project is currently underway. The Masterplan aims to enhance the Streetscape of Sholl Street and North West Coastal Highway.

The Masterplan will provide a planned approach to revitalising the streetscape, connecting the community, encouraging investment within the town and attracting tourism.

Community input into the project is key to its success.

We would like to hear your thoughts and ideas on enhancing Sholl Street and North West Coastal Highway.

We are keen to hear about how you use the streets, what your safety concerns are and ideas on improving the Town's identity.

Come meet Project team members and share your ideas

Date: Wednesday 23rd June 2021

Where: Andover Park
Andover Way, Roebourne

Time: From 3pm

BBQ Provided



Yirramagardu/Roebourne Streetscape Masterplan

Yirramagardu / Roebourne Streetscape Masterplan project is currently underway. The Masterplan aims to enhance the Streetscape of Sholl Street and North West Coastal Highway.

The Masterplan will provide a planned approach to revitalising the streetscape, connecting the community, encouraging investment within the town and attracting tourism.

Community input into the project is key to its success. We would like to hear your thoughts and ideas on enhancing Sholl Street and North West Coastal Highway.

We are keen to hear about how you use the streets, what your safety concerns are and ideas on improving the Town's identity.

Come meet Project team members and share your ideas

Date: Wednesday 23rd June 2021

Where: Andover Park
Andover Way, Roebourne

Time: From 3pm

BBQ Provided



Yirramagardu/Roebourne Streetscape

Masterplan

Yirramagardu / Roebourne Streetscape Masterplan project is currently underway. The Masterplan aims to enhance the Streetscape of Sholl Street and North West Coastal Highway.

The Masterplan will provide a planned approach to revitalising the streetscape, connecting the community, encouraging investment within the town and attracting tourism.

Community input into the project is key to its success.

We would like to hear your thoughts and ideas on enhancing Sholl Street and North West Coastal Highway.

We are keen to hear about how you use the streets, what your safety concerns are and ideas on improving the Town's identity.

Come meet Project team members and share your ideas

Date: Wednesday 23rd June 2021

Where: Andover Park
Andover Way, Roebourne

Time: From 3pm

BBQ Provided

10.3 Stakeholder engagement session one markups

6 August 2021

To: Tepina Smith

Copy to: Darryn Shugg; Tim Bailey; Ian Pexton

From: Mary Papachristos

Tel: 08 62228032

Roebourne: Streetscape Master Plan

Project no. 12548439

The City of Karratha (City) has engaged GHDWoodhead to develop the Roebourne Streetscape Master Plan to enhance the main streets of Roebourne including Roe and Sholl Street.

A Community Engagement Session was scheduled for Wednesday 30 June 2021 however, due to the Perth and Peel region entering into a snap COVID-19 lockdown this event had to be postponed. The Community Session was rescheduled for early August to ensure it did not clash with NAIDOC week, school holidays and other identified events.

On Wednesday 4 August 2021, an interactive conversation style Community Consultation session was held in Andover Park, Roebourne between 3:00pm and 6:00pm. Community members were engaged through relaying conversations about the use of the project area, family connections, changes they had witnessed, elements they would like for streetscape and asked to draw or convey locations on the 3m maps provided.

Although only eleven (11) community members registered their attendance, 22 people attended the session. The 22 attendees exclude the youth and children who were either travelling through the park or had accompanied their family members and, the City and GHDWoodhead project team members in attendance.

This Memo provides an overview of the common themes and items raised by community members conveyed to the project team during the session on Wednesday 4 August 2021. It is essential to note that the order in which the issues are listed is neither an indication of the level of interest nor the importance of each issue.

Traffic and Safety

- Allow for safe pedestrian access along Roe Street to the river that is separated from the street
- Any planting on street to allow for visibility and child safety
- Slow traffic down through the implementation of the proposed measures (eg pedestrian crossing, wombat crossing, mini roundabout, etc)
- Allow for safe pedestrian access across the highway along the entire route
- Connect Sampson bus stop with the residential area with a safe pedestrian crossing and footpath
- Consider moving Sampson bus
- Allow for caravan parking along main street
- Create a 40km hr zone along Roe Street
- Slow traffic down on Sholl street
- Widen parking bays along Roe Street to ensure vehicle wing mirrors are not damaged
- Create truck pull in bay opposite BP
- Allow for cross overs at the residential properties situated on Roe Street
- Creating more off-street parking in town

Streetscape Treatment and Amenities

- Create a cool shady town by planting more trees
- More trees in the residential area of town, Has a street tree master plan been created?
- Connect the river to the Town Centre and places of interest allowing safe access for the community and visitors
- Allow for the reinstatement of the river (or explore the option to release water into the river from the dam to ensure a constant water supply)
- Remove existing eucalyptus trees in the central median of Roe Street
- Increase shade structures to provide shading and protection around town
- Increase/more softscape planting to beautify appearance
- Include interpretive art and messages withing pavement and furniture
- Incorporate artwork on building façades
- Create seating along river so that families can enjoy the landscape
- Some seating or open places to sit in main Town area – “place to have a yarn”
- Green up central median and make visually appealing
- Remove existing creeper in central median and replace with plants and flowers
- Positive reaction to proposed entrance sign at the bridge site and southern entrance to town (name to be confirmed)

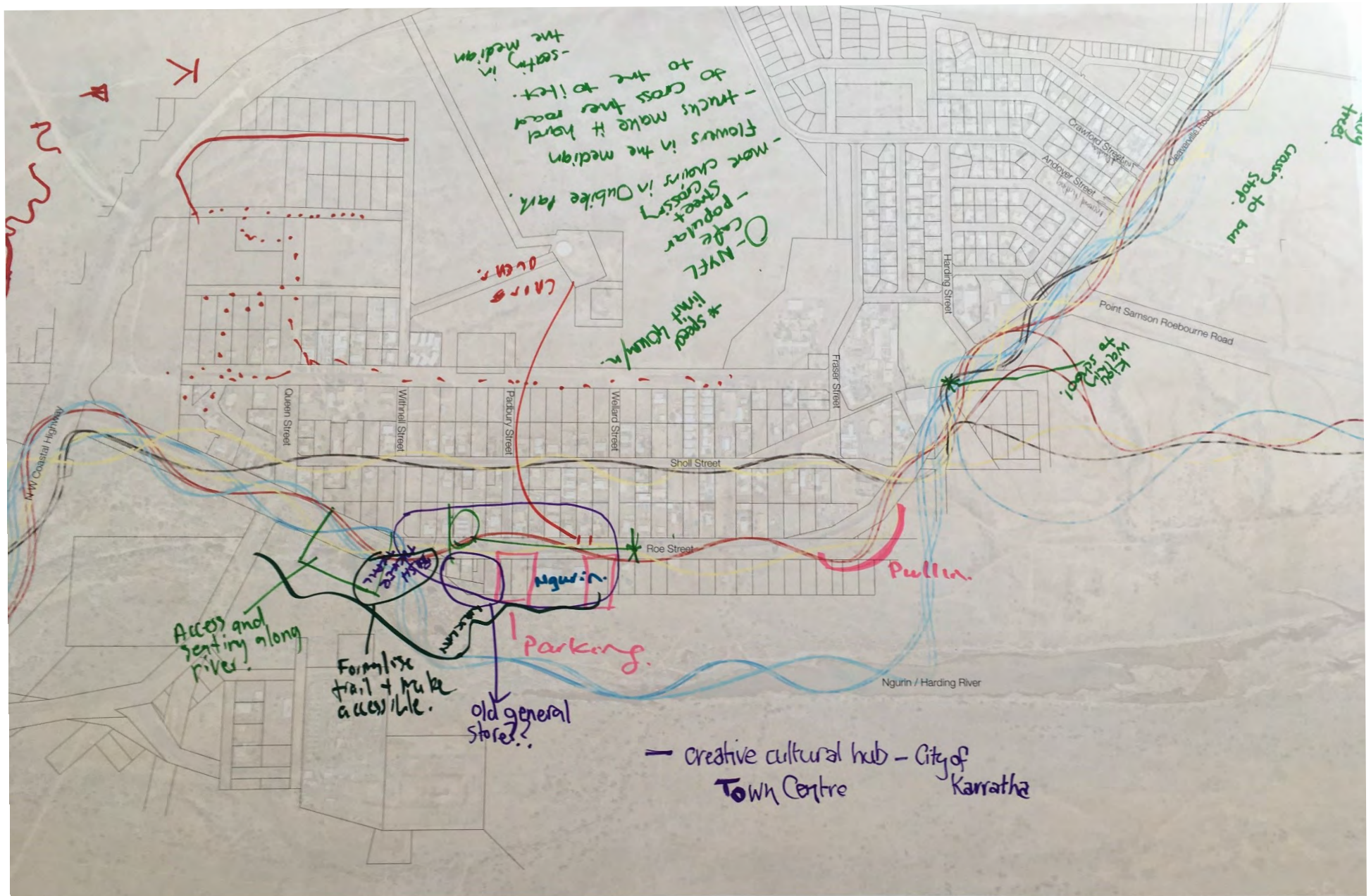
Community Connection

- Recognise the original general store, the bakery and any associated stories
- Recognise the Old Reserve and provide amenity at the site for family functions
- Recognise the art and artists of the Town
- Incorporate/use local art in streetscape and
- Create a cultural hub similar to the City of Karratha
- Connect the Town Centre with river and current walk trails to encourage people to stop in Roebourne
- Significance of the river – “it was a place where the women went. A lot of children were born there...I saw my mother give birth to my sister on the bank”

Sensitivities and Perceptions

- Explore indigenous name of for Roebourne that is acceptable by the community – different spellings, different levels of attachment
- Old Gaol – should be recognised but not “celebrated”. ie make it safe for people to walk through but do not spend money on repairing it...“it was a bad place”
- Need to understand the cultural differences between the language groups and how this can be represented in the Town

Attached are the copies of community comments written on the visual documents provided at the session.

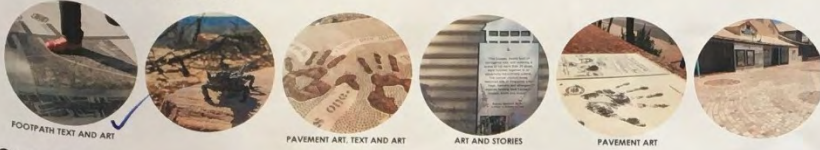


APE MASTERPLAN PROJECT

ART



INTERPRETATION



FOOTPATH TEXT AND ART

PAVEMENT ART, TEXT AND ART

ART AND STORIES

PAVEMENT ART

SIGNAGE



STREETSCAPE



FURNITURE



SHADE STRUCTURES



BUILDING ART



POSSIBLE TOWN ENTRANCE SIGN OPTION



YIRRAMAGARDU / ROEBOURNE STREETS

ROAD SPEED + PEDESTRIAN ACCESS + SAFETY



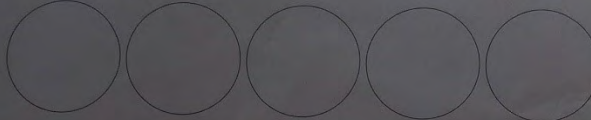
TREES + SOFTSCAPE



NGURIN BOARDWALK



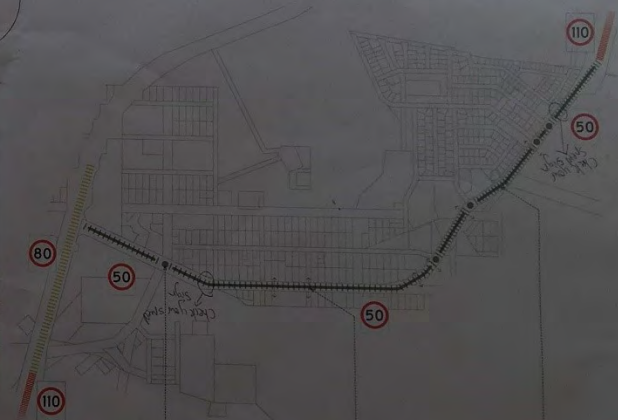
CULTURAL STORIES



PROPOSED TYPICAL SHOLL STREET SECTION



PROPOSED TYPICAL ROE STREET SECTION



INTERSECTION SAFETY TREATMENT



PEDESTRIAN CROSSING TREATMENT



CENTRAL PLANTED MEDIAN

PROPOSED TRAFFIC PLAN

ROAD SPEED + PEDESTRIAN ACCESS + SAFETY



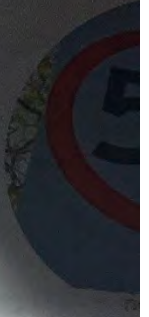
MINI ROUND ABOUT



CENTRAL PLANTED MEDIAN



PEDESTRIAN CROSSING



VEHICLE SP

TREES + SOFTSCAPE

the more the better
→
landscaping



DELONIX REGIA



YELLOW POINCIANA



EUC VICTRIX



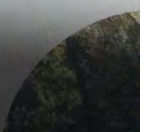
ALBIZIA SAMAN



LEOPARD TREE

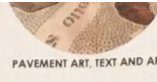
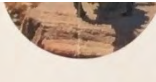


NGURIN BOARDWALK





FOOTPATH TEXT AND ART



PAVEMENT ART, TEXT AND ART



ART AND STORIES



PAVEMENT ART

✓ SIGNAGE



STREETSCAPE



FURNITURE



SHADE STRUCTURES



✓ BUILDING ART



10.4 City of Karratha Community Consultation notes and markups

Yirramagardu (Roebourne) Streetscape Masterplan

Consultation Report

Val and Kathy's Crafty Kitchen – 23rd November 2021

Attendees: Val Walker, Violet Samson (Senior Ngarluma Elder), Pansy Hicks (Senior Ngarluma Elder), Linda Rowlands-Daniel (Wangaba Roebourne Art Group), Christina Goodman (Wangaba Roebourne Art Group), Kim Gentle (REFAP), Sarai Cedar (REFAP), Angie Mitchell (PCLS).

Feedback:

- Plant lawn in the median strip, instead of 'mile-a-minute' (Dampier Pea).
- Remove the Dampier Pea from the medium strip because it grows everywhere and best suited to the beaches not the main strip of Roebourne.
- More rubbish bins.
- More recognition of the people who grew up on the 'Old Reserve'.
- Add seating in the median strip.
- Add seating along the bush-tucker trail – use wooden park benches instead of aluminum seats, as the aluminum gets too hot. Add shade over seating.
- Add lighting at Jubilee Park – so that tourists passing through can stop and use the toilet at night.
- Add a water re-fill station for caravans to the main street. The one at the Ganalili Centre has gone. Consider an 'honesty box' for water use as a contribution to the community.
- Water fountain with a dog bowl along the main street – for tourists.
- The Memorial on Roe St is important to the community because it is a good reminder of those people who fought for us.
- Retain eucalyptus trees in the median strip on Roe St – they provide good shade and have withstood vandalism to trees / plants.
- Plant wattle trees – the flowers will help brighten the streets.
- Correct spelling of Roebourne in Ngarluma language is 'Yirramagardu'. Confirmed by Pansy Hicks.
- Sign at both entrances to town should acknowledge that we are on Ngarluma Country. Wangaba Roebourne Art Group have been contracted to provide signage for Cape Lambert acknowledging this.
- Build a lookout from the Jubilee Park blue metal carpark so that people can get a better view of the river. Accessible for the elders from Roe St and the carpark.
- Replace the signs on the bush tucker trail – all faded.
- Ensure the bush tucker trail is accessible for all – currently steep, slippery and loose gravel (see photo of start of trail).
- CCTV on the bush tucker trail / Jubilee Park.

Ngarluma Yindjibarndi Foundation Limited – 26th November 2021

Attendees: Kelly Stuart, Tenillia Lockyer

Feedback:

- Proposed Pedestrian Crossing 1; trucks go too fast past Andover Park. Consider moving closer to the bus stop, as it currently crosses into nothing. There is no path for people to cross to.
- There is a gully that people use to cross the road to the bus stop (marked on pdf).
- Proposed Pedestrian Crossing 2: crossing into nothing from the BP.
- Plant natives, they are hardier.
- More trees.
- Scatter signage around town that includes both English and Ngarluma language, for tourists.
- Not keen on seating in the median strip – could be a safety issue for children. But feel seating could go at the War Memorial.
- Mound planting looks nice.
- Bus stop on Padbury Street = very popular. Could do with some more seating along this street for people waiting for the bus. Could create a nice waiting space with planting and shade.
- Board walk at river – great idea, but be conscious of flooding. Flood waters have taken out poles near the small bridge in the past. Water has come up to the old house near the Ngurin Centre before.
- Kelly to check if the project could be presented at the upcoming NYFL board meeting (week of 29th of Nov).

Yinja-Barni Art Group – 26th November 2021

Attendees: Allery Sandy, Melissa Sandy, Marlene Harold.

- Likes the mound planting.
- Likes the proposed central median planting; use wildflowers, like desert peas and mulla-mulla.
- No references to 'Marga' (Ancestral Beings) in any art. Some of the old people don't go into the Ganalili because of the Marga statues.
- Include planting like the airport entrance.
- More seating and shade.
- BBQ at Jubilee Park.
- Notice board in town. (note – there is a notice board at the Post Office).
- Flag poles along the median – allow people to use them to display flags that promote events. I.e. 'Songs for Peace'.
- Something for young kids at Jubilee Park – like a slide.
- Shade sails at Jubilee Park.
- More shade at Jubilee Park so people can have meetings. Lost shade when the Tamarix trees were removed.
- Uses hedgy plants to create a wind break at Jubilee Park.
- Paperbark trees = used for shoes, Snakewood trees = used for boomerangs and makes good firewood.
- Plant bush medicine.
- Have a place where we plant one tree of importance from each of the main language groups. 1 x tree for Ngarluma, 1 x tree for Yindjibarndi, 1 x tree for Banyjima. The Yindjibarndi tree could be a 'Majgan' tree (Snappy Gum/Eucalyptus Leucophloia). Yindjibarndi people eat the flowers of this tree and spit out the seeds.

- Have a map of country displayed somewhere in town.
- Have a water fountain up the street.
- Allery: before the caravan park was a caravan park, there used to be events held there. Football, cricket, country music and movies. Allery used to walk across from the reserve to attend. They use to walk to a house across the river to get lunch (sandwiches) – the house is still there. Allery would like to tell this story using signage or similar.

6718 Yandi for Change – Elders Council Meeting – 1st December 2021

Elders: Pansy Sambo, Jane Cheedy, Violet Samson, Wendy Hubert, Dennis Long, Pansy Hicks, Barbara Churnside, Josie Samson.

Other: Val Ross (Department of Communities), Tristan Kempton (Department of Communities), Natasha Walker (PCYC – 6718 Gathering Team).

Feedback:

- Use 'Keep our Kids Safe' or similar signage to slow down traffic up the main street (Roe)
- Fraser St – kids cross from the school (side gate) to TAFE – could use a zebra crossing**
- Dangerous for pedestrians at the turn-off to Cheeditha**
- More information around town on how to 'Report It'
- Proposed pedestrian crossing treatments at Ganalili and Ngaarda Media – good locations.
- Sturdier toilet roll holders in public toilets (stainless steel) – kids pinch the toilet roll and use it to light fires.
- More parking at Andover Park**
- Roundabout at the intersection on Andover Way/Hicks St, and Hicks St/Lockyer Way**
- Signage on Lockyer Way/Andover Way that reminds people to drive slowly around Andover Park, because children cross the road to play in the park**
- Sign on Roe St for 6718 Yandi for Change
- More signage to show tourists how to get to the Post Office and Hospital
- Proposed mound planting along Roe St – place boulders in-between planting to deter motorbikes for riding close to the highway. Use boulders similar to the ones at Andover Park, and those at the Wickham turn-off. The boulders could be painted, so that people can see them.

**feedback not related to scope of works, but noted anyway.

Cheeditha Art Group – 7th December 2021

Attendees: Carrie McDowell (Manager), Rose Barton (Art Worker), Kaye Warrie, Wendy Warrie.

Feedback:

- Footpaths with animals and language.
- Ganalili Centre is working on a revised version of the book "Wanggalli" which outlines all the details of the flora in respect of the Yinjibarndi and Ngarluma culture.
- Look at the REAP palette for the art incorporation and see what can be done in Roebourne as a similar approach – it seemed to work well there.
- Footpath extending along Cleaverville Rd for continuity and better connection.

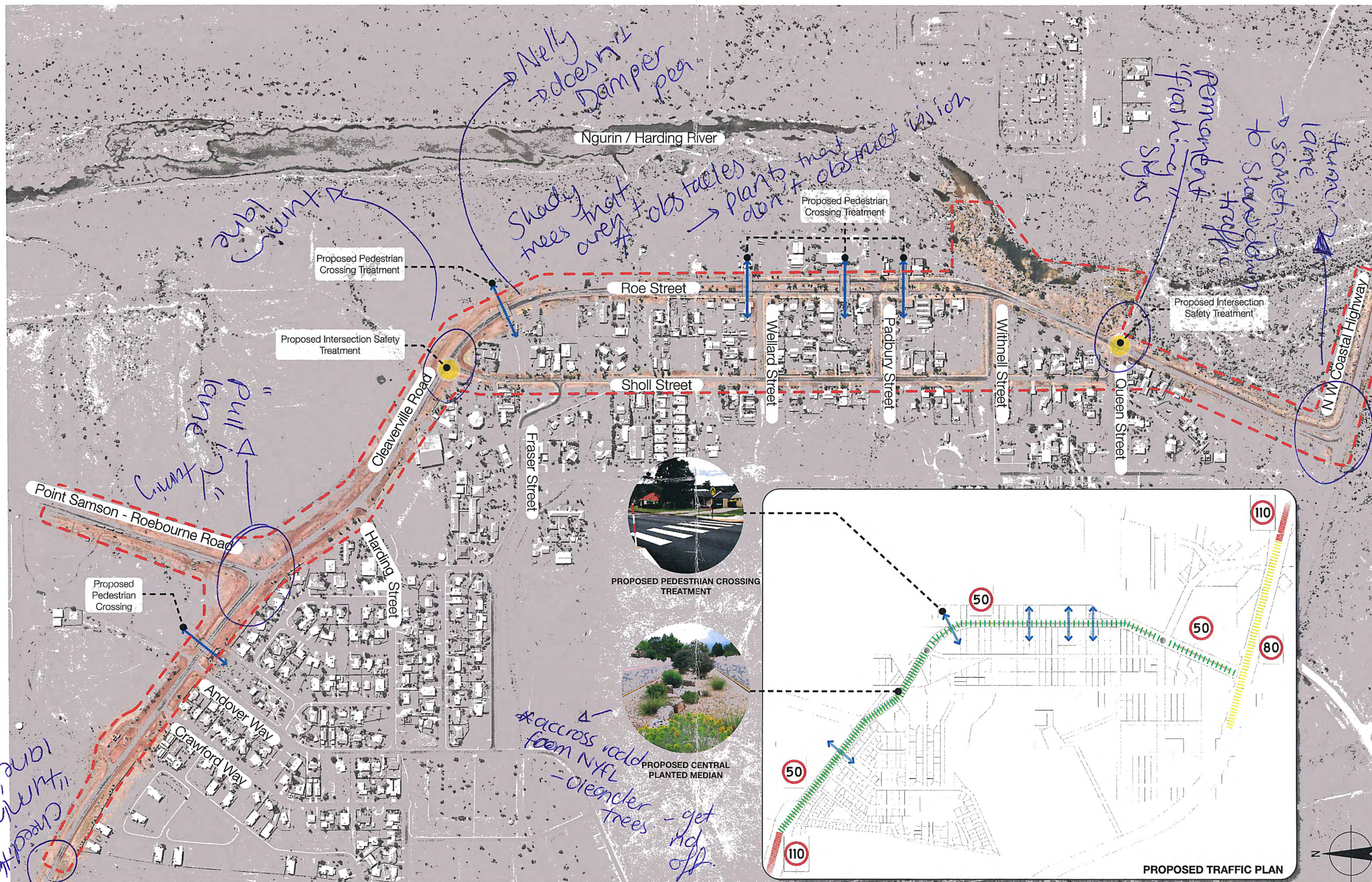
- Draw on some inspiration from what they have done in Kings Park, Perth.
- Draw on connections with all the language groups being recognized at Mt Welcome and doing similar within the town centre.
- There are blank walls on Padbury Way that could be turned into great murals.
- There are amazing murals in Katherine and Collie etc. which people visit the township to see these artwork pieces. Roebourne could do something similar.
- An Art trail could be created in Roebourne, linking all the art groups and well-known artists. You could look to be strategic about it and tie it into the existing trails? This would help to revitalize the main street and link the Yinja-Barni Art Group with the others located more centrally in town.
- Trucks are the problem in town with going too fast through the main street. Slow the trucks down!
- The proposed traffic plan should consider extending the scope area and reducing the speed on the highway at the Cheeditha turn off to 80k/h instead of 110 km/h. This would mean traffic changing from 110 km/h to 80 km/hr to 50 km/hr.
- There is a tree near the BP on the corner of the highway that is a hazard to traffic. Preference is to remove or make this corner safe.
- Would like a solar light or something similar at the turn off to Cheeditha as its quite dangerous at night with slowing down to find the turn off and trucks going around the vehicle etc. Cheeditha are pursuing this, as they have had limited support from Main Roads.
- Agree in keeping the eucalypts along Roe St median strip.
- The Dampier Pea could be used on the mounding instead. Seems to create nice coverage generally.
- The Information Bay would be a great site to revamp and add in extra amenities.
- There is lots of cultural art funding through Regional Arts WA.
- Use planter boxes on the footpath up Roe St, to create a barrier between the path and the road.
- 40km/hour speed limit along Roe St.
- Kids hangout at Yinja-Barni Art Centre.
- Considering moving the war memorial to the Old Building near the Ngurin Centre (see image). ANZAC Dawn Services could be held without blocking the road.
- Create a shady picnic area at the Old Building near the Ngurin Centre. Don't put Caravan Parking here, as this is where the Old Building is.
- Create sculptures in the shape of trees.
- Seek inspiration from the Katherine, NT Streetscape.
- Pansy Hick's art – 'Stepping Stones' along the footpath to the shop/café.
- Embed the animals that the children have created for the Ganalili Centre in the footpath. Feature their English names, and names in language.
- Connect the colours through-out town – ie. Take inspiration for the new school's colour palette.
- 'Proposed Intersection Safety Treatment' – people would just ignore and drive over.
- Put a sculpture in Jubilee Park.
- Use laser-cutting to incorporate art into shade structures.
- There used to be paintings inside the Old Vic hotel, done by local people. Someone took photos of these before the renovation.
- Plant mulla-mulla and desert peas in the median strip.

- Create shady places for people to relax to music – the police have an issue with people drinking and playing music in the Old Village.
- Use the flag poles in the median strip to display art.
- Be cautious of flooding.
- Use plaques to provide local info on native species.
- Information on how to get to the Old Gaol on the main road – people don't know how to get to the Old Gaol as they turn in from Hedland.

Ngarliyarndu Bindirri Aboriginal Corporation – 20th December 2021

Attendees: Amelia Scheele and Nellie Connors

- Suggested turning lanes at the following locations; Cheeditha turn-off, Point Samson-Roebourne Rd, Sholl St.
- Nellie doesn't like the Dampier Pea in the median strip
- Plant shady trees that don't obscure vision
- Get rid of the Oleander Tree across from NYFL – Oleander trees are poisonous
- Permanent flashing speed monitoring signs
- Turning lane at NW Coastal Highway turn-off
- Brighten-up the 150 sign pull-in bay to encourage people to stop
- Plant more Jacaranda's and Poincianas (big trees)
- Make the bus stops look nice – planting
- Make sure the mound planting isn't too close to the road and doesn't obstruct vision
- Natives can sometimes look 'scruffy' or have thorns – ie. bush hibiscus
- More shade and nicer lawn in Jubilee Park. Add more seating.
- Would be good to have something near the river that people can walk out onto. Just be careful of flooding. Make sure that any structures are not too close to the water, as kids might try to jump in and injure themselves.
- Make the bush tucker trail inviting. Add railing on both sides of the little bridge. Clean up the the bridge – it's overgrown. Trim the palm trees.
- Evening markets.
- Plant frangipani's, kurrajongs, myringas (type of boob), jacarandas, golden shower trees and poincianas up the mainstreet – for colour.
- Proposed truck bay opposite BP is a good idea.



YIRRAMAGARDU / ROEBOURNE STREETSCAPE MASTERPLAN PROJECT

Prepared for **CITY OF KARRATHA**
YIRRAMAGARDU / ROEBOURNE, WA

GHDWOODHEAD
999 Hay Street Perth WA 6000 / PO Box 3106 Perth WA 6832
T 61 8 6222 8222 E permail@ghdwoodhead.com.au W www.ghdwoodhead.com

Job No: 12548439 Date: 1st Nov 2021
Approved: I. Pexton Scale: 1:3000 @ A1
Drawing No: **SK-L001** Rev: **D**

Copyright retained by GHD Woodhead Architecture Pty Ltd

bush hisbigus (have thorns) (blue bells).



PROPOSED CENTRAL PLANTED MEDIAN



PROPOSED PLANTED STREET

make the look nice + planting
bus stops can look a bit scruffy or have natives can look a bit scruffy or have



PROPOSED MOUND PLANTING

brighten-up the ISO sign for people to stop



PROPOSED TOWN ENTRANCE SIGNAGE



YIRRAMAGARDU / ROEBOURNE STREETSCAPE MASTERPLAN PROJECT

Prepared for CITY OF KARRATHA
YIRRAMAGARDU / ROEBOURNE, WA

GHDWOODHEAD
999 Hay Street Perth WA 6000 / PO Box 3106 Perth WA 6832
T 61 8 6222 8222 E permail@ghdwoodhead.com.au W www.ghdwoodhead.com

Job No: 12548439 Date: 1st Nov 2021
Approved: I. Pexton Scale: 1:1500 @ A1
Drawing No: SK-L002 Rev: D

Copyright retained by GHD Woodhead Architecture Pty Ltd

evening markets & make the bushranger trail inviting. not too close to water & birds could try to turn.

PROPOSED PEDESTRIAN CROSSING TREATMENT



PROPOSED SHADE STRUCTURES



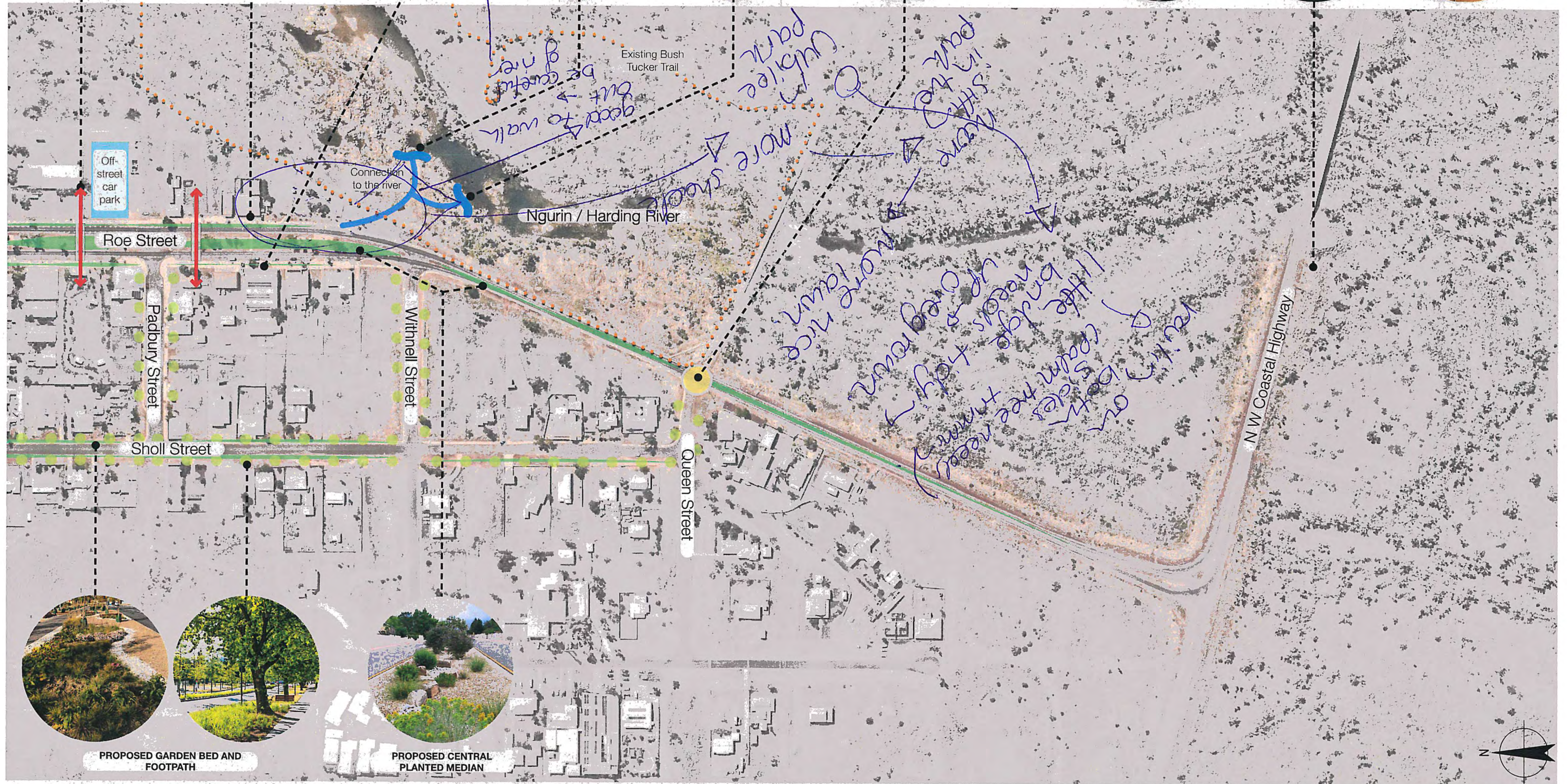
PROPOSED NGURIN BOARDWALK



PROPOSED INTERSECTION SAFETY TREATMENT



PROPOSED TOWN ENTRANCE SIGNAGE



PROPOSED GARDEN BED AND FOOTPATH



PROPOSED CENTRAL PLANTED MEDIAN



YIRRAMAGARDU / ROEBOURNE STREETSCAPE MASTERPLAN PROJECT

Prepared for CITY OF KARRATHA
YIRRAMAGARDU / ROEBOURNE, WA

GHDWOODHEAD

999 Hay Street Perth WA 6000 / PO Box 3106 Perth WA 6832
T 61 8 6222 8222 E permail@ghdwoodhead.com.au W www.ghdwoodhead.com

Job No: 12548439 Date: 1st Nov 2021
Approved: I. Pexton Scale: 1:1500 @ A1
Drawing No: SK-L004 Rev: D

Copyright retained by GHD Woodhead Architecture Pty Ltd

frangipanis, karragony (purple trees), myrica (type of boat)

PROPOSED INTERSECTION SAFETY TREATMENT



PROPOSED MOUND PLANTING



PROPOSED CENTRAL PLANTED MEDIAN



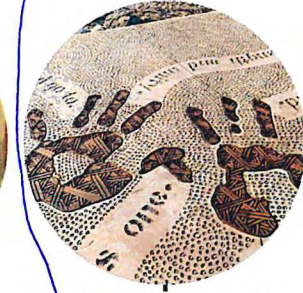
PROPOSED PLANTED STREET



PROPOSED BUILDING WALL ART



PROPOSED PAVEMENT ART



PROPOSED SHADE STRUCTURES



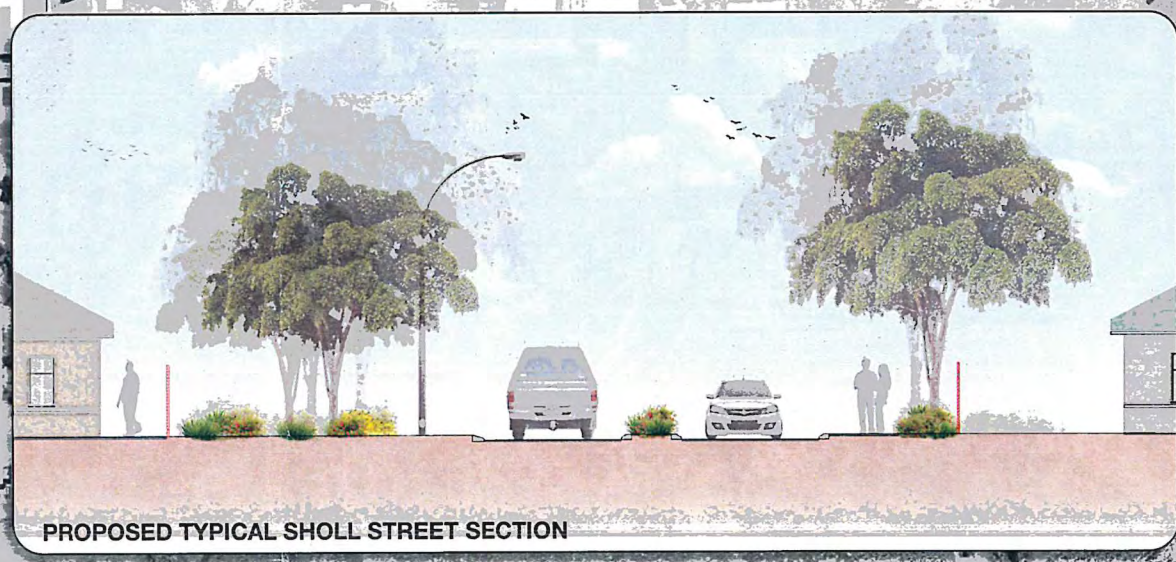
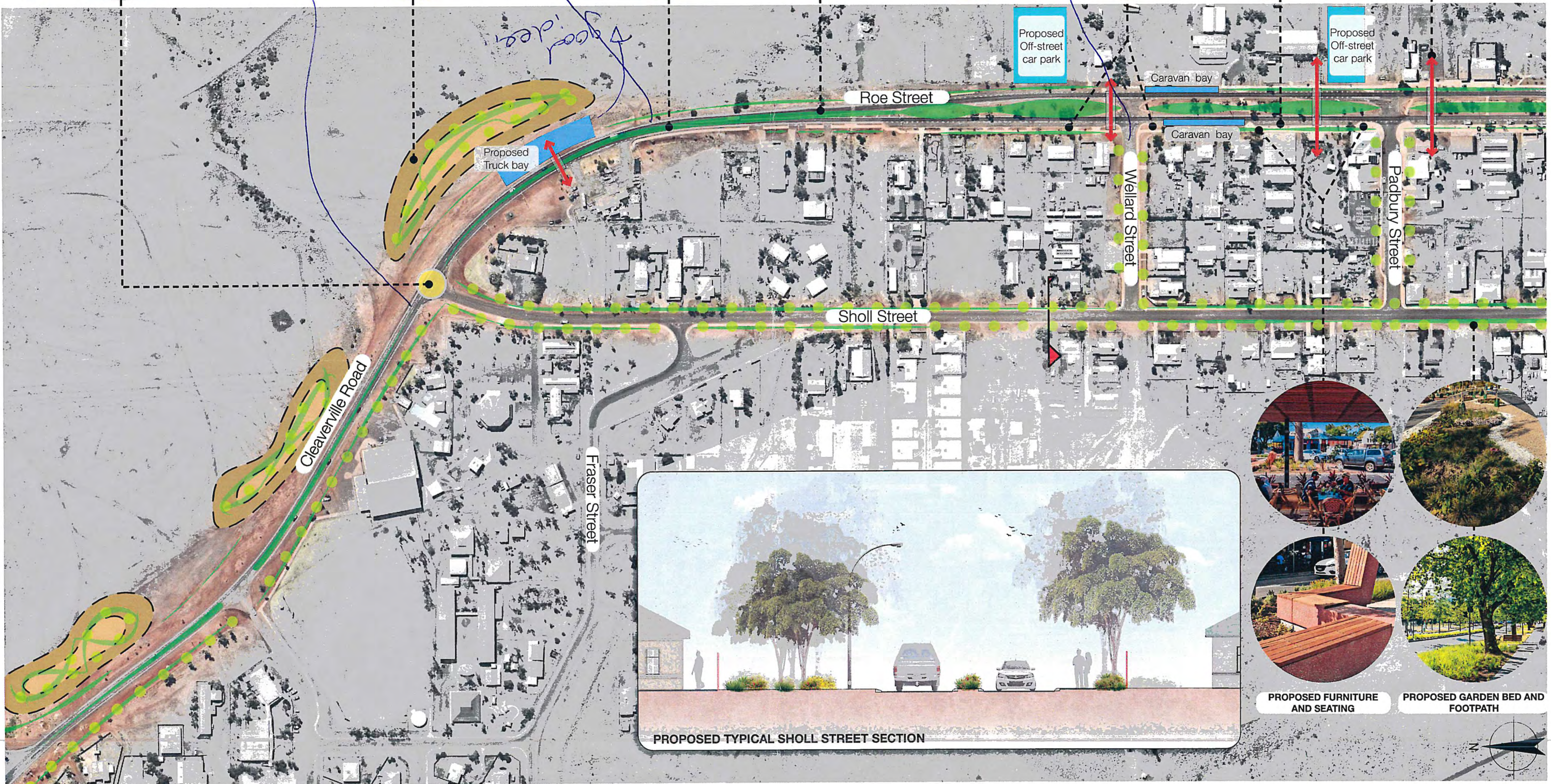
PROPOSED PEDESTRIAN CROSSING TREATMENT



garden shower trees

frangipanis + jacaranda up main street

good ideas



PROPOSED TYPICAL SHOLL STREET SECTION



PROPOSED FURNITURE AND SEATING



PROPOSED GARDEN BED AND FOOTPATH



YIRRAMAGARDU / ROEBOURNE STREETScape MASTERPLAN PROJECT

Prepared for CITY OF KARRATHA
YIRRAMAGARDU / ROEBOURNE, WA

GHDWOODHEAD
999 Hay Street Perth WA 6000 / PO Box 3106 Perth WA 6832
T 61 8 6222 8222 E permail@ghdwoodhead.com.au W www.ghdwoodhead.com

Job No: 12548439 / Date: 1st Nov 2021
Approved: I. Pexton / Scale: 1:1500 @ A1
Drawing No: SK-L003 / Rev: D

Copyright retained by GHD Woodhead Architecture Pty Ltd

