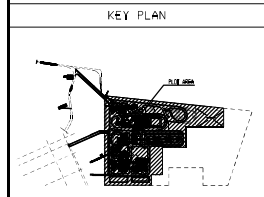
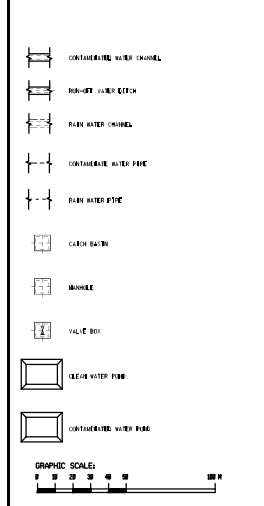


REFERENCE DRG.	No.
PROPOSED RETRAITE PLANT GENERAL LAYOUT PLAN	2-300-324-DWG-TRE-0505
CIVIL WORK STANDARD DETAIL	2-300-324-DWG-TRE-0508
GENERAL IMPLANTATION SCHEDULE TOPOGRAPHY	2-300-324-DWG-TRE-2146
U/G BARR. WATER PLAN BARRIS 2.1, 2.2 / 2.4-2.6 & 13-15/16	2-300-324-DWG-TRE-3004 Sd B5 & B6
U/G BARR. WATER PLAN BARRIS 2.1, 2.2 / 2.4-2.6 & 13-15/16	2-300-324-DWG-TRE-3004 Sd B2, B3 & B4
U/G BARR. WATER PLAN BARRIS 2.1, 2.2 / 2.4-2.6 & 13-15/16	2-300-324-DWG-TRE-3004 Sd B1 & B7
CONCRETE CHANNEL DRAIN LOCATION	2-300-324-DWG-TRE-3004 Sd B9
U/G SEWER & BARR. WATER MANHOLE LAYOUT TABLE	2-300-324-DWG-TRE-3002 Sd B1
PERSPECTIVE CHANNEL NORTH PLAN SECTION & DETAILS	2-300-324-DWG-TRE-2160 Sd B1
PERSPECTIVE CHANNELS NORTH & WEST PLAN SECTION & DETAILS	2-300-324-DWG-TRE-2160 Sd B2
GENERAL PLAN U/G CONTAMINATED WATER SEWER	2-300-324-DWG-TRE-0807 Sd B1
EXISTING NETWORK UNDERGROUND PLAN GENERAL	2-300-324-DWG-TRE-0161 Sd B2



- NOTES**
1. ALL COORDINATES AND ELEVATIONS ARE INDICATED IN METERS.
  2. EL. 100.000 IS THE HIGH POINT OF GRADE FINISHING AND CORRESPOND TO EL. 5.00 + AHD.
  3. ALL DIMENSIONS ARE MILLIMETERS UNLESS NOTED OTHERWISE.
  4. HIGH POINT OF FINISHED PAVEMENT: + 5.00 m AHD.
  5. HIGH POINT OF FINISHED GRADE: +6.00-5.00 m AHD.
  6. HIGH POINT OF TILL LEVEL: +9.700-5.00 m AHD.
  7. FOR INFORMATION OF ELEVATIONS, COORDINATES, SLOPES/PIPES AND LONGITUDE SEE DWG. 2-300-324-DWG-TRE-3004 TO Sd B1.

**LEGEND**



NO.	REVISION	DATE	BY	CHKD.	APPV.
01	ISSUE FOR CONSTRUCTION GENERAL REVISION	2017	YAN	YAN	YAN
02	ISSUE FOR CONSTRUCTION GENERAL REVISION	2017	YAN	YAN	YAN
03	ISSUE FOR CONSTRUCTION	2017	YAN	YAN	YAN
04	ISSUE FOR CONSTRUCTION	2017	YAN	YAN	YAN
05	ISSUE FOR CONSTRUCTION WITH PAGES	2017	YAN	YAN	YAN
06	ISSUE FOR CONSTRUCTION WITH PAGES	2017	YAN	YAN	YAN

**YAN BURRLUP PROJECT**

YANG PU BARR. RETRAITES PROJECTS  
BARR. POND/SLA SYSTEM AUSTRALIA  
103 HIPPY TAN PLANT

2-300-324-DWG-TRE-3004 Sd B1 & B2  
U/G BARR. WATER PLAN

GENERAL PLAN  
U/G RAIN WATER



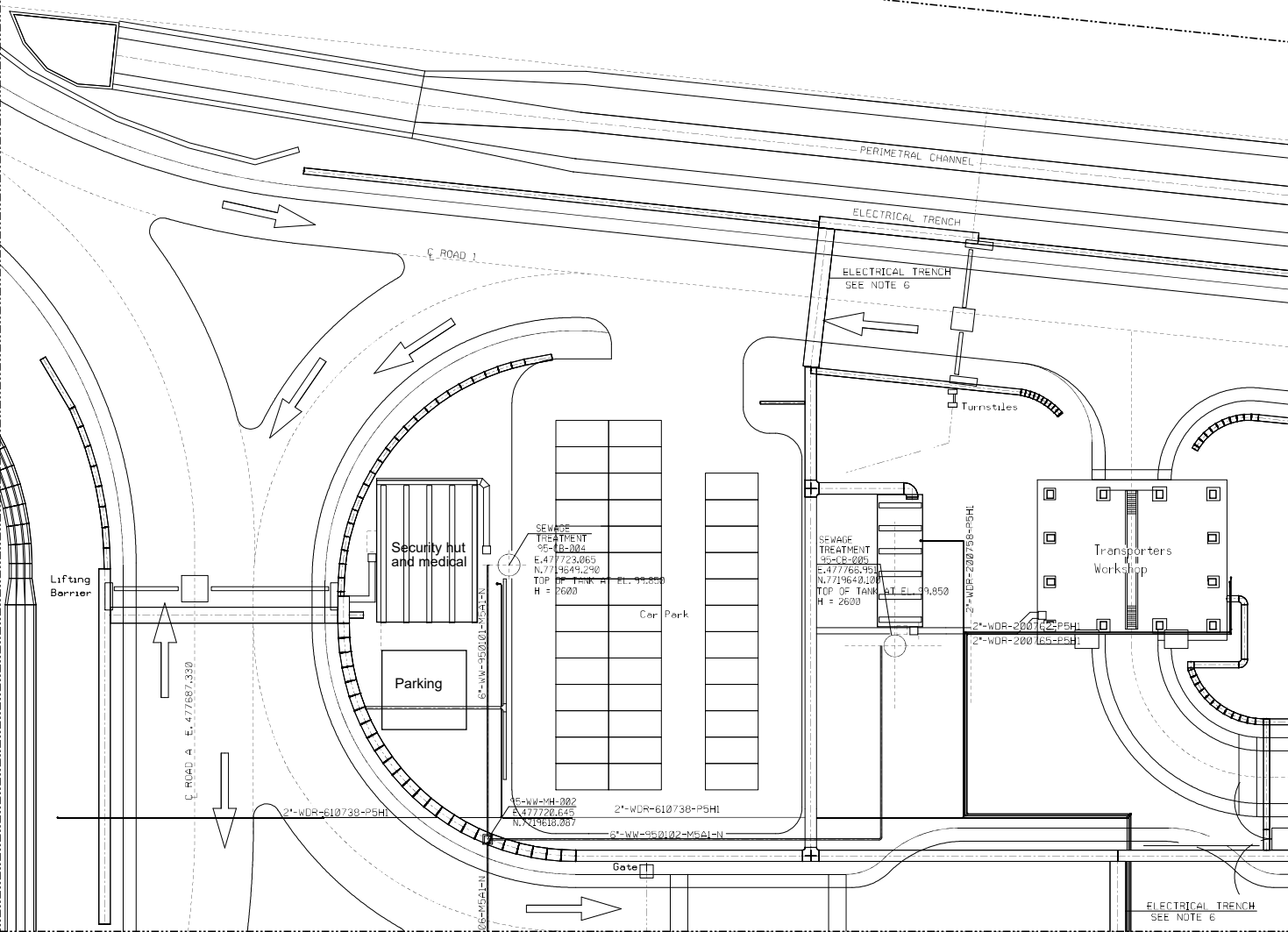
N. 7719724.075

DRAWING LIMIT

N. 7719708.792

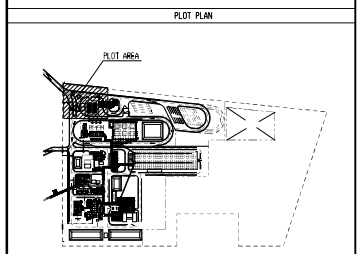
DRAWING LIMIT E. 477665.163

MATCHLINE E. 477811.763 FOR CONTINUATION SEE DWG. 2-300-329-DWG-TRE-3017 Sh 03



MATCHLINE N. 7719607.617 FOR CONTINUATION SEE DWG. 2-300-329-DWG-TRE-3017 Sh 04

REFERENCE DRG.	NO.
AMMONIUM NITRATE PLANT OVERALL PLOT PLAN	2-300-329-DWG-TRE-0505
GENERAL IMPLANTATION MODIFIED TOPOGRAPHY	2-300-329-DWG-TRE-2946
CIVIL WORK STANDARD DETAIL	2-300-329-STD-TRE-2501
ROADS & ACCESS PLAN (S1, S1-S1)	2-300-329-DWG-TRE-2978
PERIMETRAL CHANNELS NORTH PLAN, SECTIONS A, DETAILS S1, S1, S1, S1	2-300-329-DWG-TRE-2968
GENERAL PLAN U/G CONTAMINATED WATER & SANITARY SEWER (S1, S1)	2-300-329-DWG-TRE-3017
LIGHTING NETWORK UNDERGROUND PLAN	2-300-329-DWG-TRE-0919
GENERAL PLAN U/G RAIN WATER (S1, S1)	2-300-329-DWG-TRE-3004
FIRE & GAS PROTECTION EQUIPMENT LOCATION	2-300-329-DWG-TRE-6671,6673, 6677,6678,6679,6688
U/G PIPING ISOMETRIC RAIN/CONTAMINATED WATER & SANITARY SEWER	2-300-329-DWG-TRE-3032
U/G MANHOLE LAYOUT TABLE	2-300-329-DWG-TRE-3002
U/G CONTAMINATED WATER & SANITARY SEWER PLAN DETAILS S1, S1	2-300-329-DWG-TRE-3017
EARTHING LAY-OUT OVERALL EARTHING WELLS	2-300-329-DWG-TRE-0913



- NOTES
- 1- DIMENSIONS ARE INDICATED IN METERS.
  - 2- COORDINATES IN METERS.
  - 3- FOR DETAILS CLEAN SURFACE WATER POND SEE 2-300-329-DWG-TRE-2964
  - 4- FOR INFORMATION ON THE DESIGN ELEMENTS OF THE ROADS: COORDINATES, LENGTH, RADIUS, ETC. SEE DWG. 2-300-329-DWG-TRE-2978 Sh.5
  - 5- EL. 99.650 IS THE HIGH POINT OF THE ROAD UNIT AND CORRESPONDS TO EL. S.650 AHD.
  - 6- FOR DETAIL SEE DWG 2-300-329-DWG-TRE-0919

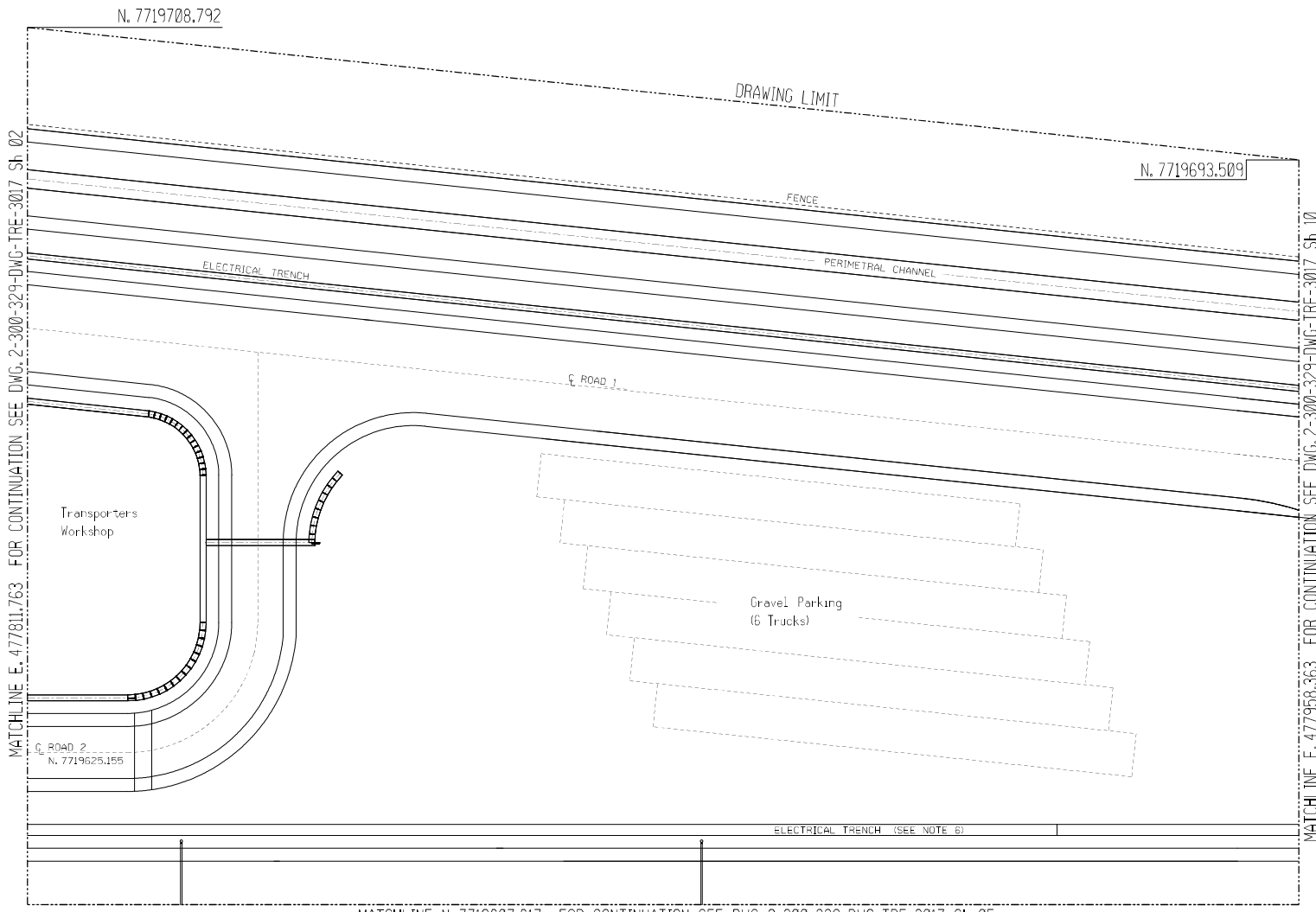
LEGEND

TOC:	TOP OF CHANNEL
BDC:	BOTTOM OF CHANNEL
S:	SLOPE
TYPE I: CHANNEL TYPE 2, COVER TYPE D (STD-TRE-3501 Sh 9 & 10)	
TYPE II: CHANNEL TYPE 2, COVER TYPE C (STD-TRE-3501 Sh 9 & 10)	
--- LINE ABOVE GROUND	
95-WW:	SANITARY SEWER SYSTEM
92-WW:	SEWER WATER SYSTEM
92-FW:	DRAIN WATER
91-WF:	FIRE WATER SYSTEM
FB:	STORAGE TANK
CB:	WATER TREATMENT PLANT
MH:	MANHOLE
CB:	CATCH BASIN
VB:	VALVE BOX

REV	DATE	DESCRIPTION	PREP	CHK	APPD.
10	29-08-2016	AS-BUILT	JAY	JAY	FBH
09	22-04-2016	ISSUED FOR CONSTRUCTION	JAY	JAY	FBH
08	04-04-2016	ISSUED FOR CONSTRUCTION	JAY	JAY	FBH
07	18-05-2015	ISSUED FOR CONSTRUCTION	JAY	JAY	FBH
REV	DATE	DESCRIPTION	PREP	CHK	APPD.

<b>TAN BURRUP PROJECT</b> 100% PHOSPHORUS NITRATES PTY. LTD. BURRUP PENINSULA, WESTERN AUSTRALIA 915 MTFD TAN PLANT		DRAWN BY: JAY DWG NO: 2-300-329-DWG-TRE-3017 SHEET NO: 17 FILE NO: 2-300-329-DWG-TRE-3017
--	--	--

UC/CONTAMINATED WATER & SANITARY SEWER PLAN BUILDING

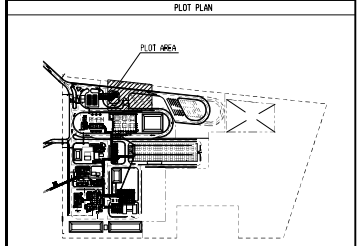


MATCHLINE E. 477811.763 FOR CONTINUATION SEE DWG. 2-300-329-DWG-TRE-3017 Sh. 02

MATCHLINE E. 477958.363 FOR CONTINUATION SEE DWG. 2-300-329-DWG-TRE-3017 Sh. 10

MATCHLINE N. 7719607.617 FOR CONTINUATION SEE DWG. 2-300-329-DWG-TRE-3017 Sh. 05

REFERENCE DRG.	NO.
AMMONIUM NITRATE PLANT OVERALL PLOT PLAN	2-300-329-DWG-TRE-0505
GENERAL IMPLANTATION MODIFIED TOPOGRAPHY	2-300-329-DWG-TRE-2946
CIVIL WORK STANDARD DETAIL	2-300-329-STD-TRE-2501
ROADS & ACCESS PLAN (SH. 1-SH. 5)	2-300-329-DWG-TRE-2978
PERIMETRAL CHANNELS NORTH-PLAN, SECTIONS A, DETAILS (SH. 1 & SH. 2)	2-300-329-DWG-TRE-2968
GENERAL PLAN U/G CONTAMINATED WATER & SANITARY SEWER (SH. 00)	2-300-329-DWG-TRE-3017
LIGHTING NETWORK UNDERGROUND PLAN	2-300-329-DWG-TRE-0919
GENERAL PLAN U/G RAIN WATER (SH. 00)	2-300-329-DWG-TRE-3004
FIRE & GAS PROTECTION EQUIPMENT LOCATION	2-300-329-DWG-TRE-6671,6673, 6677,6678,6679,6688
U/G PIPING ISOMETRIC TRAIN/CONTAMINATED WATER & SANITARY SEWER	2-300-329-DWG-TRE-3032
U/G MANHOLE LAYOUT TABLE	2-300-329-DWG-TRE-3002
U/G CONTAMINATED WATER & SANITARY SEWER PLAN DETAILS (SH. 12)	2-300-329-DWG-TRE-3017
EARTHING LAY-OUT OVERALL EARTHING WELLS	2-300-329-DWG-TRE-0913



- NOTES
1. DIMENSIONS ARE INDICATED IN METERS.
  2. COORDINATES IN METERS.
  3. FOR DETAILS CLEAN SURFACE WATER POND SEE 2-300-329-DWG-TRE-2964
  4. FOR INFORMATION ON THE DESIGN ELEMENTS OF THE ROADS: COORDINATES, LENGTH, RADIUS, ETC. SEE DWG. 2-300-329-DWG-TRE-2978 Sh. 5
  5. EL. 99.668 IS THE HIGH POINT OF THE ROAD UNIT AND CORRESPONDS TO EL. 5.658 AHD.
  6. FOR DETAIL SEE DWG 2-300-329-DWG-TRE-0919

LEGEND

TC: TOP OF CHANNEL  
 BOC: BOTTOM OF CHANNEL  
 S: SLOPE

TYPE I: CHANNEL TYPE 2, COVER TYPE D (STD-TRE-3501 Sh. 9 & 10)  
 TYPE II: CHANNEL TYPE 2, COVER TYPE C (STD-TRE-3501 Sh. 9 & 10)

--- LINE ABOVE GROUND

95-WW: SANITARY SEWER SYSTEM  
 92-WW: SEWER WATER SYSTEM  
 92-FW: DRAIN WATER  
 91-WF: FIRE WATER SYSTEM  
 FB: STORAGE TANK  
 CB: WATER TREATMENT PLANT  
 MH: MANHOLE  
 Cb: CATCH BASIN  
 VB: VALVE BOX

REV	DATE	DESCRIPTION	PREP.	CHK.	APPD.	CLIENT DOCUMENT CODES
10	29-09-2016	AS-BUILT	CSB	MEM	JAY	FBH
09	02-04-2014	ISSUED FOR CONSTRUCTION	CSB	MEM	JAY	FBH
08	04-04-2014	ISSUED FOR CONSTRUCTION	CSB	MEM	JAY	FBH
07	09-03-2014	ISSUED FOR CONSTRUCTION	CSB	MEM	JAY	FBH

TAN BURRUP PROJECT

HORA PHOSPHOR NITRATES PTY. LTD.  
 BURRUP PENINSULA, WESTERN AUSTRALIA  
 '95 MTPD TAN PLANT

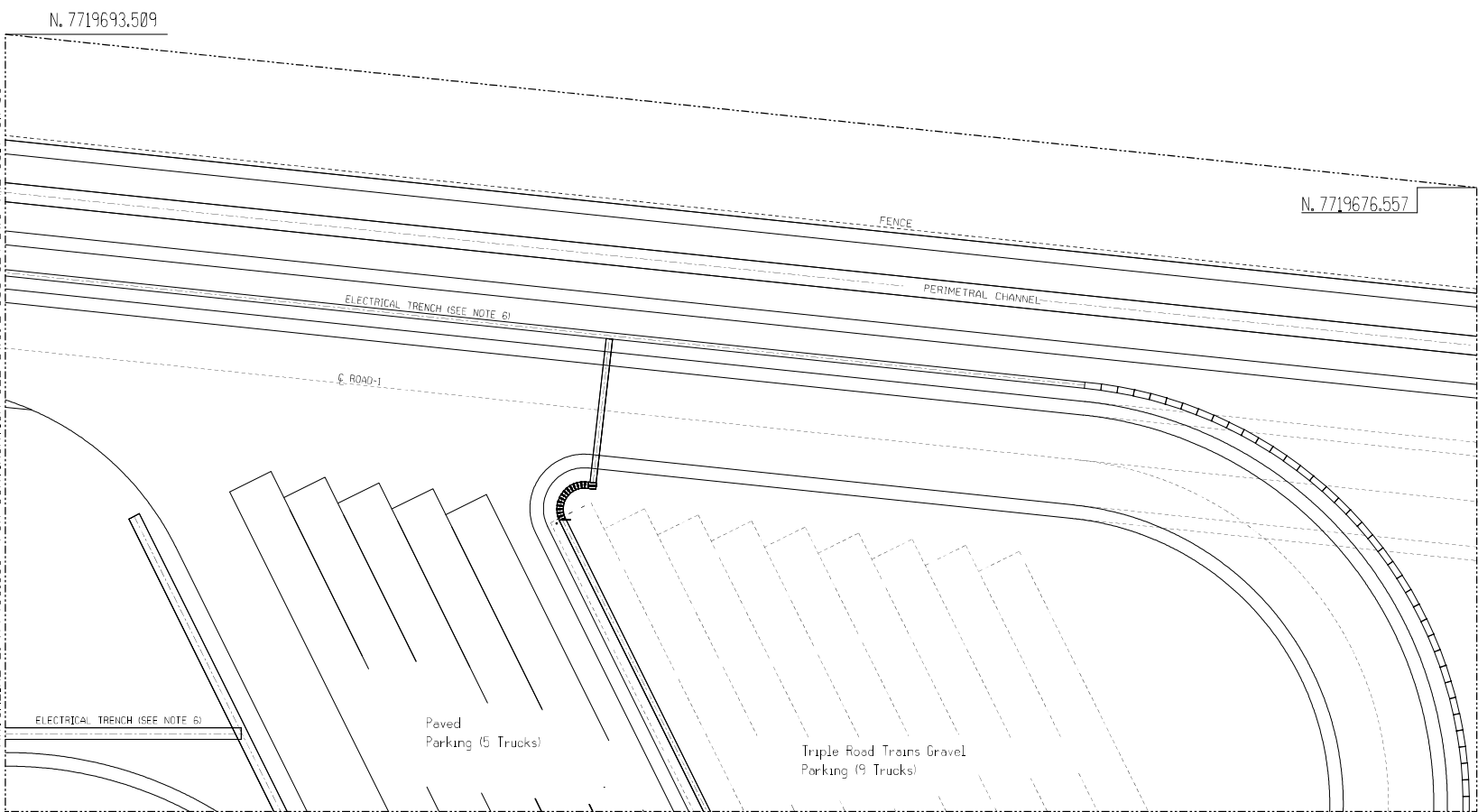
Scale: 1:500  
 DWG NO: 2-300-329-DWG-TRE-3017

DATE: 09/09/2016  
 SHEET NO: 10  
 FILE NO: 2-300-329-DWG-TRE-3017

U/G/CONTAMINATED WATER & SANITARY SEWER PLAN  
 PARKING TRUCKS

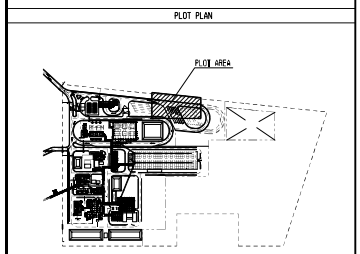


MATCHLINE E. 477958.363 FOR CONTINUATION SEE DWG. 2-300-329-DWG-TRE-3017 Sh. 03



MATCHLINE N. 7719607.617 FOR CONTINUATION SEE DWG. 2-300-329-DWG-TRE-3017 Sh 11

REFERENCE DRG.	NO.
AMMONIUM NITRATE PLANT OVERALL PLOT PLAN	2-300-329-DWG-TRE-0505
GENERAL IMPLANTATION MODIFIED TOPOGRAPHY	2-300-329-DWG-TRE-2946
CIVIL WORK STANDARD DETAIL	2-300-329-STD-TRE-2501
ROADS & ACCESS PLAN (SH. 1-SH. 5)	2-300-329-DWG-TRE-2978
PERIMETRAL CHANNELS NORTH-PLAN, SECTIONS A, DETAILS (SH. 1 & SH. 2)	2-300-329-DWG-TRE-2968
GENERAL PLAN U/G CONTAMINATED WATER & SANITARY SEWER (SH. 00)	2-300-329-DWG-TRE-3017
LIGHTING NETWORK UNDERGROUND PLAN	2-300-329-DWG-TRE-0919
GENERAL PLAN U/G RAIN WATER (SH. 00)	2-300-329-DWG-TRE-3004
FIRE & GAS PROTECTION EQUIPMENT LOCATION	2-300-329-DWG-TRE-6671,6673, 6677,6678,6679,6688
U/G PIPING ISOMETRIC TRAIN/CONTAMINATED WATER & SANITARY SEWER	2-300-329-DWG-TRE-3032
U/G MANHOLE LAYOUT TABLE	2-300-329-DWG-TRE-3002
U/G CONTAMINATED WATER & SANITARY SEWER PLAN DETAILS (SH. 13)	2-300-329-DWG-TRE-3017
EARTHING LAY-OUT OVERALL EARTHING WELLS	2-300-329-DWG-TRE-0913



- NOTES
- 1- DIMENSIONS ARE INDICATES IN METERS.
  - 2- COORDINATES IN METERS.
  - 3- FOR DETAILS CLEAN SURFACE WATER POND SEE 2-300-329-DWG-TRE-2964
  - 4- FOR INFORMATION ON THE DESIGN ELEMENTS OF THE ROADS: COORDINATES, LENGTH, RADIUS, ETC. SEE DWG. 2-300-329-DWG-TRE-2978 Sh.5
  - 5- EL. 93.680 IS THE HIGH POINT OF THE ROAD UNIT AND CORRESPONDS TO EL. 5.650 AHD.
  - 6- FOR DETAIL SEE DWG 2-300-329-DWG-TRE-0919
  - 7- FOR DETAIL SEE DWG 2-300-329-DWG-TRE-3017 Sh 13

- LEGEND
- TOC: TOP OF CHANNEL  
 BOC: BOTTOM OF CHANNEL  
 S: SLOPE
- TYPE I: CHANNEL TYPE 2, COVER TYPE D (STD-TRE-3501 Sh 9 & 10)  
 TYPE II: CHANNEL TYPE 2, COVER TYPE C (STD-TRE-3501 Sh 9 & 10)
- LINE ABOVE GROUND
- 95-WW: SANITARY SEWER SYSTEM  
 92-WW: SEWER WATER SYSTEM  
 92-FW: DRAIN WATER  
 91-WF: FIRE WATER SYSTEM  
 FB: STORAGE TANK  
 CB: WATER TREATMENT PLANT  
 MH: MANHOLE  
 Cb: CATCH BASIN  
 VB: VALVE BOX

REV	DATE	DESCRIPTION	PREP.	CHK.	APPD.	CLIENT DOCUMENT CODE
10	29-09-2016	AS-BUILT	...	...	JAY	FBI
09	22-04-2014	ISSUED FOR CONSTRUCTION	...	...	JAY	FBI
08	04-04-2014	ISSUED FOR CONSTRUCTION	...	...	JAY	FBI
07	03-03-2014	ISSUED FOR CONSTRUCTION	...	...	JAY	FBI

TAN BURRUP PROJECT

HONS. PHOSPHORUS NITRATES PTY. LTD.  
 BURRUP PENINSULA, WESTERN AUSTRALIA  
 915 MTPD TAN PLANT

Drawn by: JAY  
 DWG NO: 2-300-329-DWG-TRE-3017

Scale: 1:1000

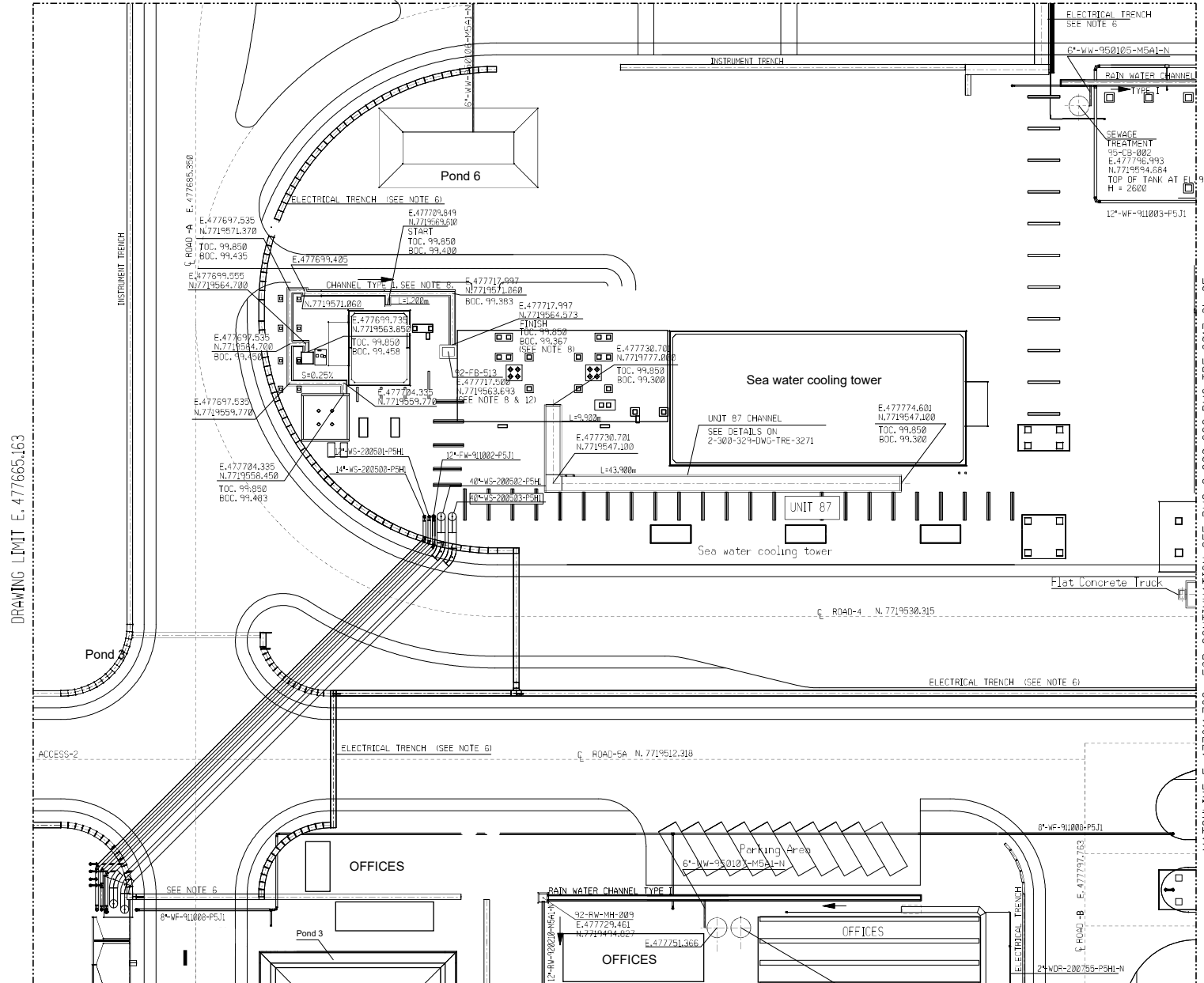
DATE: 29-09-2016

FILE NO: 2-300-329-DWG-TRE-3017

UG/CONTAMINATED WATER & SANITARY SEWER PLAN  
 PARKING TRUCKS



MATCHLINE N. 7719607.617 FOR CONTINUATION SEE DWG. 2-300-329-DWG-TRE-3017 Sh 02

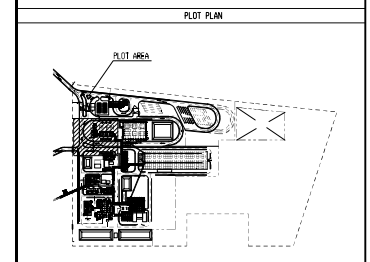


DRAWING LIMIT E. 477665.163

MATCHLINE E. 477811.763 FOR CONTINUATION SEE DWG. 2-300-329-DWG-TRE-3017 Sh 05

MATCHLINE N. 7719484.004 FOR CONTINUATION SEE DWG. 2-300-329-DWG-TRE-3017 Sh 06

REFERENCE DRG.	NO.
AMMONIUM NITRATE PLANT OVERALL PLOT PLAN	2-300-329-DWG-TRE-0505
GENERAL IMPLANTATION MODIFIED TOPOGRAPHY	2-300-329-DWG-TRE-2946
CIVIL WORK STANDARD DETAIL	2-300-329-STD-TRE-3501
ROADS & ACCESS PLAN (SH 1 SH 5)	2-300-329-DWG-TRE-2978
PERIMETER CHANNELS NORTH-PLAN SECTIONS & DETAILS (CS 1 & 2)	2-300-329-DWG-TRE-2968
GENERAL PLAN U/G CONTAMINATED WATER & SANITARY SEWER (SA 10)	2-300-329-DWG-TRE-3017
LIGHTING NETWORK UNDERGROUND PLAN	2-300-329-DWG-TRE-3019
GENERAL PLAN U/G RAIN WATER (SA 10)	2-300-329-DWG-TRE-3004
FIRE & GAS PROTECTION EQUIPMENT LOCATION	2-300-329-DWG-TRE-6671,6673, 6677,6678,6679,6688
U/G PIPING ISOMETRIC TRAIN/CONTAMINATED WATER & SANITARY SEWER	2-300-329-DWG-TRE-3032
U/G MANHOLE LAYOUT TABLE	2-300-329-DWG-TRE-3002
U/G CONTAMINATED WATER & SANITARY SEWER PLAN DETAILS (SH 13)	2-300-329-DWG-TRE-3017



- NOTES**
- DIMENSIONS ARE INDICATED IN METERS.
  - COORDINATES IN METERS.
  - FOR DETAILS CLEAN SURFACE WATER POND SEE 2-300-329-DWG-TRE-2964
  - FOR INFORMATION ON THE DESIGN ELEMENTS OF THE ROADS: COORDINATES, LENGTH, RADIUS, ETC. SEE DWG. 2-300-329-DWG-TRE-2978 SH.5
  - EL. 99.688 IS THE HIGH POINT OF THE ROAD UNITS AND CORRESPONDS TO EL. 5.658 AFD.
  - FOR DETAIL SEE DWG. 2-300-329-DWG-TRE-4919
  - FOR DETAIL SEE DWG. 2-300-329-DWG-TRE-3017 SH 13
  - CONCRETE CHANNEL & PIT, WILL BE COATED WITH EPOXY RESIN.
  - FOR DETAIL SEE STD-TRE-3501 SH.8
  - FOR DETAIL OF V.B. SEE DWG. 2-300-329-STD-TRE-3507
  - FOR DETAILS SEE 2-300-329-DWG-TRE-3005

**LEGEND**

TOC:-	TOP OF CHANNEL
BOC:-	BOTTOM OF CHANNEL
S:-	SLOPE
TYPE I: CHANNEL TYPE 2, COVER TYPE D (STD-TRE-3501 SH.9 & 10)	
TYPE II: CHANNEL TYPE 2, COVER TYPE C (STD-TRE-3501 SH.9 & 10)	
----- LINE ABOVE GROUND	
95-WW:	SANITARY SEWER SYSTEM
92-WW:	SEWER WATER SYSTEM
90-FW:	DRAIN WATER
91-WF:	FIRE WATER SYSTEM
FB:	STORAGE TANK
CB:	WATER TREATMENT PLANT
MH:	MANHOLE
CB:	CATCH BASIN
VB:	VALVE BOX

REV	DATE	DESCRIPTION	PREP.	DWG. APPR.
10	25-02-2016	AS-BUILT	CS	JAY FBH
09	12-04-2015	ISSUED FOR CONSTRUCTION	CS	JAY FBH
08	04-04-2015	ISSUED FOR CONSTRUCTION	CS	JAY FBH
07	10-03-2015	ISSUED FOR CONSTRUCTION	CS	JAY FBH

**TAN BURRUP PROJECT**

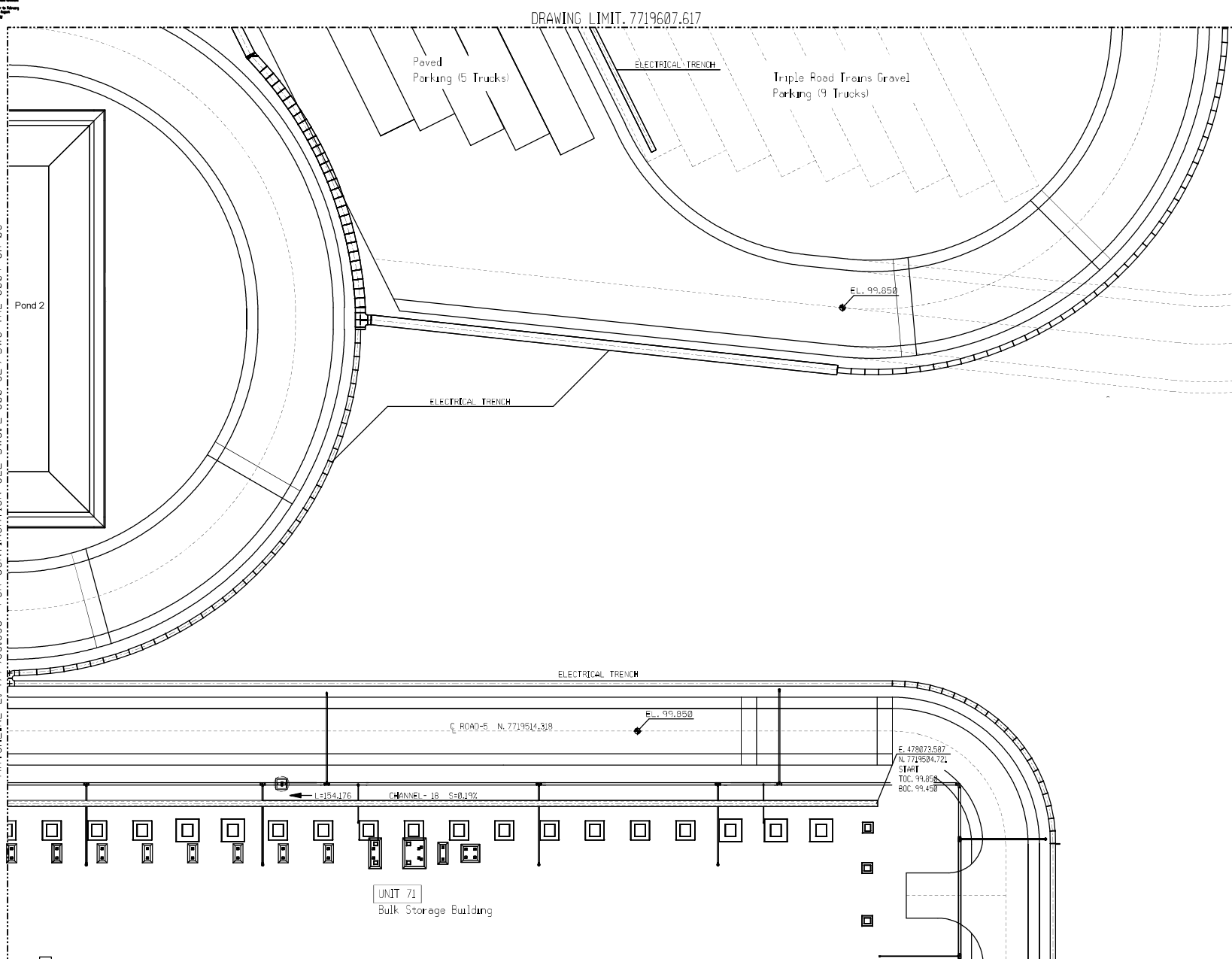
100% PHOSPHORUS NITRATES PTY. LTD.  
BURRUP PENINSULA, WESTERN AUSTRALIA  
915 MTFD TAN PLANT

UG/CONTAMINATED WATER & SANITARY SEWER PLAN  
UNIT 87





MATCHLINE E. 477958.363 FOR CONTINUATION SEE DWG. 2-300-329-DWG-TRE-3004 Sh. 03

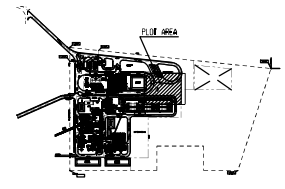


MATCHLINE E. 477958.363 FOR CONTINUATION SEE DWG. 2-300-329-DWG-TRE-3004 Sh. 03

MATCHLINE N. 7719484.004 FOR CONTINUATION SEE DWG. 2-300-329-DWG-TRE-3004 Sh. 07

REFERENCE DWG.	No.
AMMONIUM NITRATE PLANT OVERALL PLOT PLAN	2-300-329-DWG-TRE-8505
GENERAL IMPLANTATION MODIFIED TOPOGRAPHY	2-300-329-DWG-TRE-2946
CIVIL WORK STANDARD DETAIL	2-300-329-STD-TRE-3501
ROADS & ACCESS PLAN (SH 1-SH 5)	2-300-329-DWG-TRE-2978
PERIMETRAL CHANNELS NORTH-PLAN, SECTIONS & DETAILS (SH 1 & SH 2)	2-300-329-DWG-TRE-2968
GENERAL PLAN U/G CONTAMINATED WATER & SANITARY SEWER (SH 01)	2-300-329-DWG-TRE-3017
LIGHTING NETWORK UNDERGROUND PLAN	2-300-329-DWG-TRE-4919
GENERAL PLAN U/G RAIN WATER (SH 01)	2-300-329-DWG-TRE-3084
FIRE & GAS PROTECTION EQUIPMENT LOCATION	2-300-329-DWG-TRE-6671,6672, 6677,6678,6679,6680
U/G TYPING ISOMETRIC RAIN/CONTAMINATED WATER & SANITARY SEWER	2-300-329-DWG-TRE-3832
CLEAN SURFACE WATER POND 1-1	2-300-329-DWG-TRE-2964

KEY PLAN



GENERAL NOTES

- 1- DIMENSIONS ARE INDICATED IN METERS.
- 2- COORDINATES IN METERS
- 3- FOR DETAILS CLEAN SURFACE WATER POND SEE 2-300-329-DWG-TRE-2964
- 4- FOR INFORMATION ON THE DESIGN ELEMENTS OF THE ROADS COORDINATES, LENGTH, RADIUS, ETC. SEE DWG. 2-300-329-DWG-TRE-2978 SH.5
- 5- EL. 99.850 IS THE HIGH POINT OF THE ROAD UNIT AND CORRESPONDS TO EL. 5.850 AHD.
- 6- FOR DETAIL SEE DWG 2-300-329-DWG-TRE-3084 SH. 09

LEGEND

- TOC= TOP OF CHANNEL  
 BOC= BOTTOM OF CHANNEL  
 S= SLOPE  
 TYPE I: CHANNEL TYPE 2 , COVER TYPE D (STD-TRE-3501 SH. 9 & 10)  
 TYPE II: CHANNEL TYPE 2 , COVER TYPE C (STD-TRE-3501 SH. 9 & 10)  
 --- LINE ABOVE GROUND  
 95-WH: SANITARY SEWER SYSTEM  
 92-WH: SEWER WATER SYSTEM  
 92-FW: DRAIN WATER  
 91-WF: FIRE WATER SYSTEM  
 FB : STORAGE TANK  
 CH : WATER TREATMENT PLANT  
 MH : MANHOLE  
 CB : CATCH BASIN  
 VB : VALVE BOX

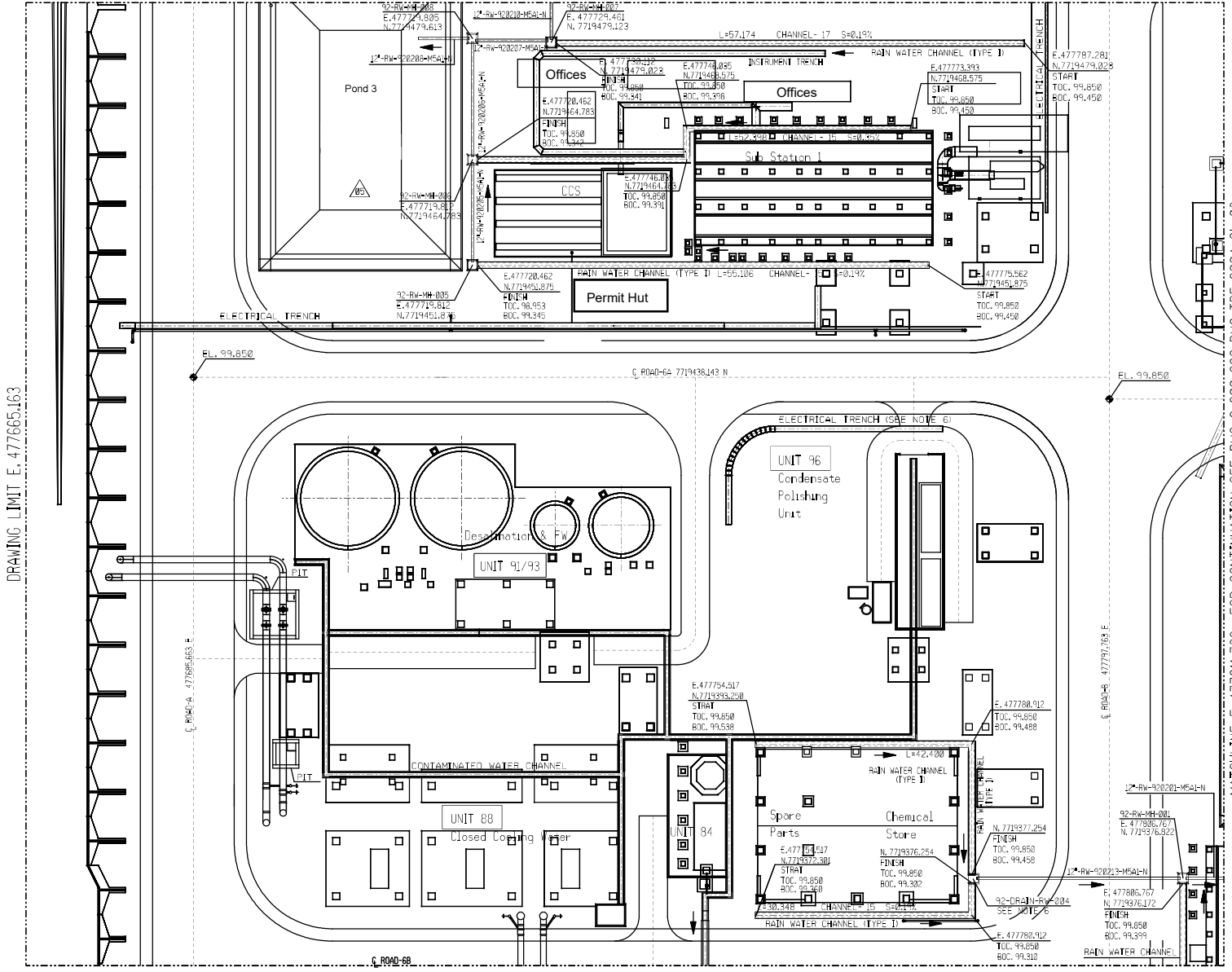
REV	DATE	DESCRIPTION	PRO.	CHK.	APP.
07	17-01-2016	AS-BUILT	ADV	JAN	FBH
06	14-01-2016	APPROVED FOR CONSTRUCTION	ADV	JAN	FBH
05	14-01-2016	APPROVED FOR CONSTRUCTION	ADV	JAN	FBH
03	15-01-2016	APPROVED FOR CONSTRUCTION	ADV	LGW	FBH
00	11-01-2015	APPROVED FOR DESIGN	ADV	LGW	FBH

TAN BURRUP PROJECT		
REV	DATE	DESCRIPTION
01	17-01-2016	AS-BUILT
02	14-01-2016	APPROVED FOR CONSTRUCTION
03	15-01-2016	APPROVED FOR CONSTRUCTION
04	15-01-2016	APPROVED FOR CONSTRUCTION
05	15-01-2016	APPROVED FOR CONSTRUCTION
06	15-01-2016	APPROVED FOR CONSTRUCTION
07	17-01-2016	AS-BUILT

YARRA PULBARRA NITRATES PTY. LTD.  
 BURRUP PENINSULA, WESTERN AUSTRALIA  
 915 MTPD TAN PLANT  
 UNDERGROUND RAIN WATER UNITS 71



MATCHLINE N. 7719484.004 FOR CONTINUATION SEE DWG. 2-300-329-DWG-TRE-3004 Sh 02

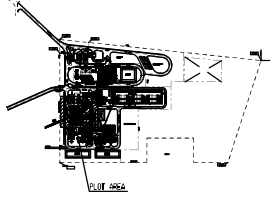


MATCHLINE E. 477811.763 FOR CONTINUATION SEE DWG. 2-300-329-DWG-TRE-3004 Sh 06

DRAWING LIMIT E. 477665.163

REFERENCE DWG.	No.
AMMONIUM NITRATE PLANT OVERALL PLOT PLAN	2-300-329-DWG-TRE-8505
GENERAL IMPLANTATION MODIFIED TOPOGRAPHY	2-300-329-DWG-TRE-2946
CIVIL WORK STANDARD DETAIL	2-300-329-STD-TRE-3501
ROADS & ACCESS PLAN (SH 1-SH 5)	2-300-329-DWG-TRE-2978
PERIMETRAL CHANNELS NORTH-PLAN, SECTIONS & DETAILS (SH 1 & SH 2)	2-300-329-DWG-TRE-2968
GENERAL PLAN U/G CONTAMINATED WATER & SANITARY SEWER (SH 01)	2-300-329-DWG-TRE-3017
LIGHTING NETWORK UNDERGROUND PLAN	2-300-329-DWG-TRE-3919
GENERAL PLAN U/G RAIN WATER (SH 01)	2-300-329-DWG-TRE-3004
FIRE & GAS PROTECTION EQUIPMENT LOCATION	2-300-329-DWG-TRE-6071,6072,6073,6074,6075,6076,6077
U/G TIPPING ISOMETRIC RAIN/CONTAMINATED WATER & SANITARY SEWER	2-300-329-DWG-TRE-3032
CLEAN SURFACE WATER POND 1-1	2-300-329-DWG-TRE-2964

KEY PLAN



GENERAL NOTES

- 1- DIMENSIONS ARE INDICATED IN METERS.
- 2- COORDINATES IN METERS
- 3- FOR DETAILS CLEAN SURFACE WATER POND SEE 2-300-329-DWG-TRE-2964
- 4- FOR INFORMATION ON THE DESIGN ELEMENTS OF THE ROADS: COORDINATES, LENGTH, RADIUS, ETC. SEE DWG. 2-300-329-DWG-TRE-2978 SH 5
- 5- EL. 99.850 IS THE HIGH POINT OF THE ROAD UNIT AND CORRESPONDS TO EL. 5.650 AHD.
- 6- FOR DETAIL SEE DWG 2-300-329-DWG-TRE-3004 SH 09

LEGEND

- TOC = TOP OF CHANNEL  
 BOC = BOTTOM OF CHANNEL  
 S = SLOPE
- TYPE I: CHANNEL TYPE 2, COVER TYPE D (STD-TRE-3501 SH 9 & 10)  
 TYPE II: CHANNEL TYPE 2, COVER TYPE C (STD-TRE-3501 SH 9 & 10)

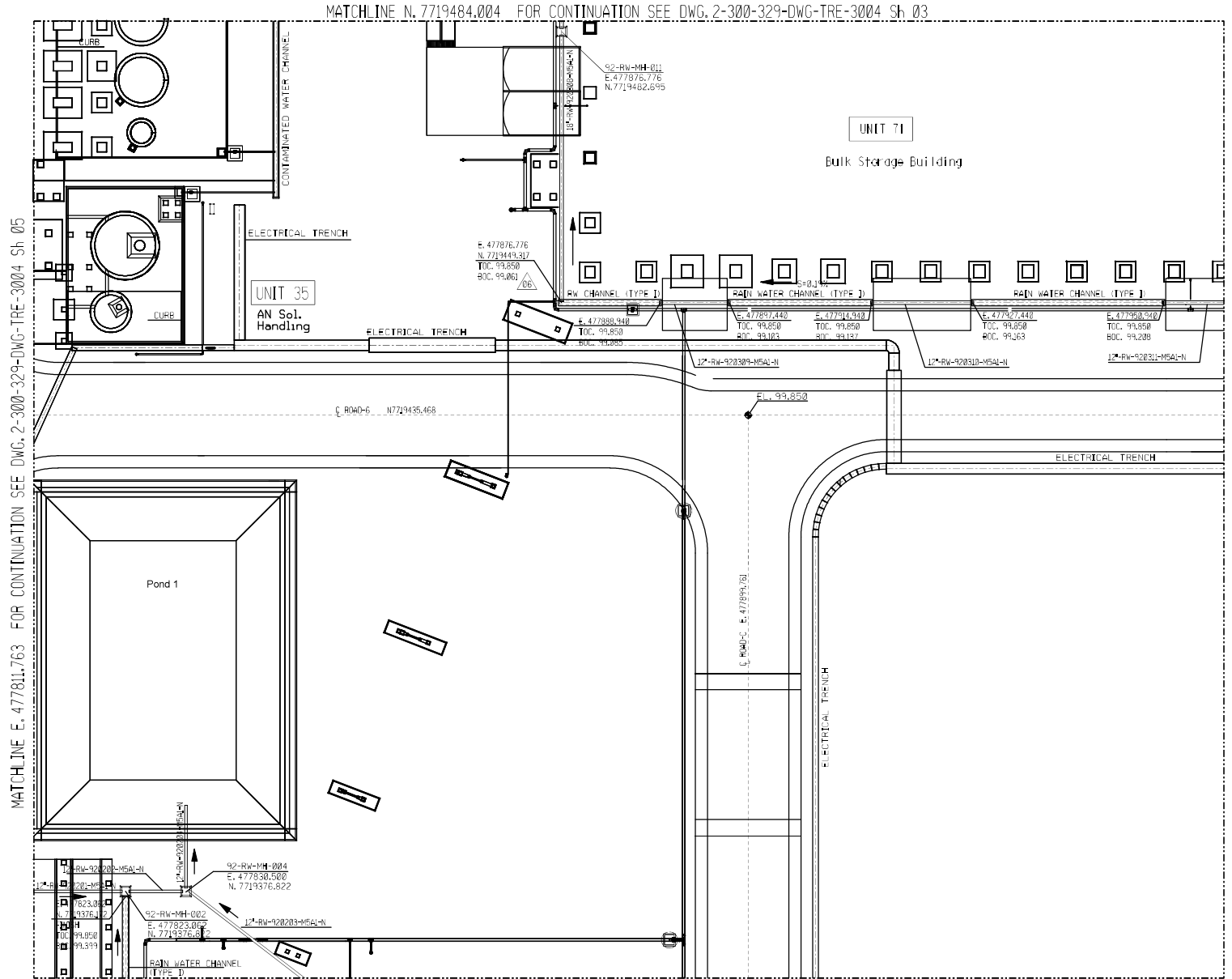
- LINE ABOVE GROUND
- 95-WH: SANITARY SEWER SYSTEM
  - 92-WH: SEWER WATER SYSTEM
  - 92-FW: DRAIN WATER
  - 91-WF: FIRE WATER SYSTEM
  - FB: STORAGE TANK
  - MB: WATER TREATMENT PLANT
  - CH: MANHOLE
  - CB: CATCH BASIN
  - VB: VALVE BOX

REV	DATE	DESCRIPTION	PREP.	CHK.	APPR.
01	21-08-2016	AS-BUILT	AVY	DM	JAV
02	04-04-2016	APPROVED FOR CONSTRUCTION	AVY	DM	JAV
03	14-08-2015	APPROVED FOR CONSTRUCTION	AVY	DM	JAV
04	03-05-2015	APPROVED FOR CONSTRUCTION	AVY	DM	LGW
05	11-02-2015	APPROVED FOR DESIGN	AVY	DM	LGW

TAN BURRUP PROJECT		SHEET NO.	
YARRA PULBARRA NITRATES PTY. LTD. BURRUP PENSULA, WESTERN AUSTRALIA 935 MTPD TAN PLANT	SCALE: 1:250	SHEET NO. 2-300-329-DWG-TRE-3004	
DATE: 2016/08/05	FILE NO: 2-300-329-DWG-TRE-3004		

UNDERGROUND RAIN WATER  
 UNITS 84-91/93 & 96





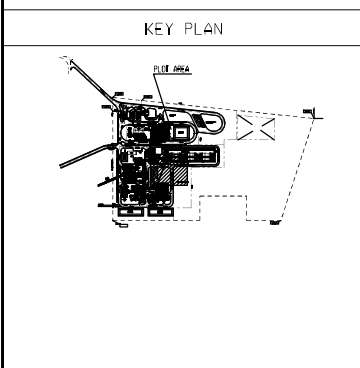
MATCHLINE N. 7719484.004 FOR CONTINUATION SEE DWG. 2-300-329-DWG-TRE-3004 Sh 03

MATCHLINE E. 477811.763 FOR CONTINUATION SEE DWG. 2-300-329-DWG-TRE-3004 Sh 05

MATCHLINE E. 477958.363 FOR CONTINUATION SEE DWG. 2-300-329-DWG-TRE-3004 Sh 07

MATCHLINE N. 7719366.143 FOR CONTINUATION SEE DWG. 2-300-329-DWG-TRE-3004 Sh 08

REFERENCE DWG.	No.
AMMONIUM NITRATE PLANT OVERALL PLOT PLAN	2-300-329-DWG-TRE-8505
GENERAL IMPLANTATION MODIFIED TOPOGRAPHY	2-300-329-DWG-TRE-2946
CIVIL WORK STANDARD DETAIL	2-300-329-STD-TRE-3501
ROADS & ACCESS PLAN (SH 1-SH 5)	2-300-329-DWG-TRE-2978
PERIMETRAL CHANNELS NORTH-PLAN, SECTIONS & DETAILS (SH 1 & SH 2)	2-300-329-DWG-TRE-2968
GENERAL PLAN U/G CONTAMINATED WATER & SANITARY SEWER (SH 10)	2-300-329-DWG-TRE-3017
LIGHTING NETWORK UNDERGROUND PLAN	2-300-329-DWG-TRE-9319
GENERAL PLAN U/G RAIN WATER (SH 10)	2-300-329-DWG-TRE-3004
FIRE & GAS PROTECTION EQUIPMENT LOCATION	2-300-329-DWG-TRE-6071,6672, 6677,6678,6679,6680
U/G TIPPING ISOMETRIC RAIN/CONTAMINATED WATER & SANITARY SEWER	2-300-329-DWG-TRE-3832
CLEAN SURFACE WATER POND 1-1	2-300-329-DWG-TRE-2964



- GENERAL NOTES
- 1- DIMENSIONS ARE INDICATED IN METERS.
  - 2- COORDINATES IN METERS
  - 3- FOR DETAILS CLEAN SURFACE WATER POND SEE 2-300-329-DWG-TRE-2964
  - 4- FOR INFORMATION ON THE DESIGN ELEMENTS OF THE ROADS, COORDINATES, LENGTH, RADIUS, ETC. SEE DWG. 2-300-329-DWG-TRE-2978 SH 5
  - 5- EL. 99.850 IS THE HIGH POINT OF THE ROAD UNIT AND CORRESPONDS TO EL. 5.850 AHD.
  - 6- FOR DETAIL SEE DWG 2-300-329-DWG-TRE-3004 SH 09

- LEGEND
- TOC = TOP OF CHANNEL  
 BOC = BOTTOM OF CHANNEL  
 S = SLOPE  
 TYPE I = CHANNEL TYPE 2, COVER TYPE D (STD-TRE-3501 SH 9 & 10)  
 TYPE II = CHANNEL TYPE 2, COVER TYPE C (STD-TRE-3501 SH 9 & 10)  
 --- --- LINE ABOVE GROUND
- 95-WW : SANITARY SEWER SYSTEM  
 92-WW : SEWER WATER SYSTEM  
 92-RW : DRAIN WATER  
 91-WF : FIRE WATER SYSTEM  
 FB : STORAGE TANK  
 CB : WATER TREATMENT PLANT  
 MH : MANHOLE  
 Cb : CATCH BASIN  
 VB : VALVE BOX

REV	DATE	DESCRIPTION	PREP.	CHK.	APPR.
07	21-01-2016	AS-BUILT	AVY	DM	JAV FBH
06	14-01-2016	APPROVED FOR CONSTRUCTION	AVY	DM	JAV FBH
05	14-10-2015	APPROVED FOR CONSTRUCTION	AVY	DM	JAV FBH
03	03-05-2015	APPROVED FOR CONSTRUCTION	OSB	DM	LGW FBH
00	11-02-2015	APPROVED FOR DESIGN	OSB	DM	LGW FBH

TAN BURRUP PROJECT			CLIENT DOCUMENT CODE:		
YARRA PULBARRA NITRATES PTY. LTD. BURRUP PENINSULA, WESTERN AUSTRALIA 935 MTPD TAN PLANT			SCALE:	1:250	
			PROJECT NO.:	2-300-329-DWG-TRE-3004	
<small>This drawing and any information derived therefrom is the property of Yarra Pulbarr Nitrates Pty. Ltd. and is to be used only for the purposes stated. It is not to be reproduced, stored in a retrieval system, or transmitted in any form or by any means, electronic, mechanical, photocopying, recording, or by any information storage and retrieval system, without the prior written consent of Yarra Pulbarr Nitrates Pty. Ltd.</small>			DATE:	21-01-2016	

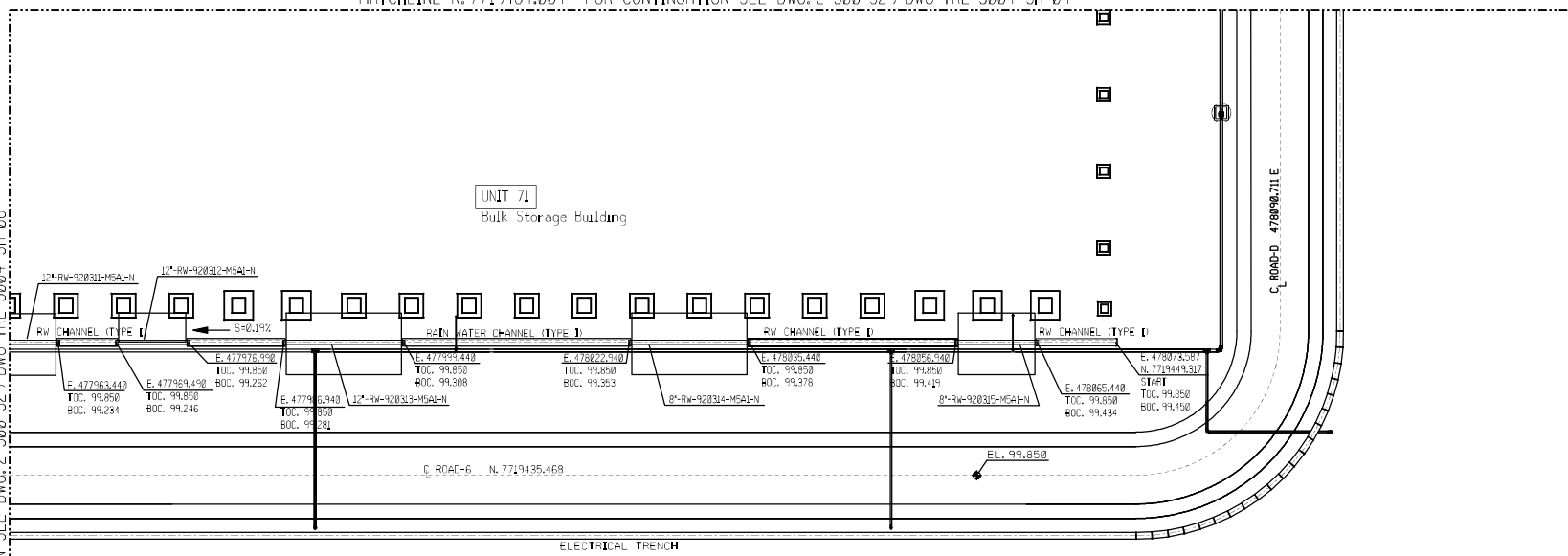
UNDERGROUND RAIN WATER  
UNITS 35 & 71



MATCHLINE E. 477958.363 FOR CONTINUATION SEE DWG. 2-300-329-DWG-TRE-3004 SH 06

MATCHLINE N. 7719484.004 FOR CONTINUATION SEE DWG. 2-300-329-DWG-TRE-3004 SH 04

UNIT 71  
Bulk Storage Building



ELECTRICAL TRENCH

C ROAD-D 478898.711E

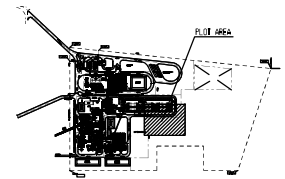
C ROAD-G N. 7719435.469

EL. 99.850

DRAWING LIMIT E. 478120.964

REFERENCE DWG.	No.
AMMONIUM NITRATE PLANT OVERALL PLOT PLAN	2-300-329-DWG-TRE-0505
GENERAL IMPLANTATION MODIFIED TOPOGRAPHY	2-300-329-DWG-TRE-2946
CIVIL WORK STANDARD DETAIL	2-300-329-STD-TRE-3501
ROADS & ACCESS PLAN (SH 1-SH 5)	2-300-329-DWG-TRE-2978
PERIMETRAL CHANNELS NORTH-PLAN, SECTIONS & DETAILS (SH 1 & SH 2)	2-300-329-DWG-TRE-2968
GENERAL PLAN U/G CONTAMINATED WATER & SANITARY SEWER (SH 01)	2-300-329-DWG-TRE-3017
LIGHTING NETWORK UNDERGROUND PLAN	2-300-329-DWG-TRE-0919
GENERAL PLAN U/G RAIN WATER (SH 02)	2-300-329-DWG-TRE-3004
FIRE & GAS PROTECTION EQUIPMENT LOCATION	2-300-329-DWG-TRE-6671,6672, 6677,6678,6679,6680
U/G TIPPING ISOMETRIC RAIN/CONTAMINATED WATER & SANITARY SEWER	2-300-329-DWG-TRE-3032
CLEAN SURFACE WATER POND 1-1	2-300-329-DWG-TRE-2964

KEY PLAN



GENERAL NOTES

- 1- DIMENSIONS ARE INDICATED IN METERS.
- 2- COORDINATES IN METERS
- 3- FOR DETAILS CLEAN SURFACE WATER POND SEE 2-300-329-DWG-TRE-2964
- 4- FOR INFORMATION ON THE DESIGN ELEMENTS OF THE ROADS: COORDINATES, LENGTH, RADIUS, ETC. SEE DWG. 2-300-329-DWG-TRE-2978 SH 5
- 5- EL. 99.850 IS THE HIGH POINT OF THE ROAD UNIT AND CORRESPONDS TO EL. 5.650 AHD.
- 6- FOR DETAIL SEE DWG 2-300-329-DWG-TRE-3004 SH 09

LEGEND

- TOC= TOP OF CHANNEL  
 BOC= BOTTOM OF CHANNEL  
 S= SLOPE
- TYPE I: CHANNEL TYPE 2, COVER TYPE D (STD-TRE-3501 SH 9 & 10)  
 TYPE II: CHANNEL TYPE 2, COVER TYPE C (STD-TRE-3501 SH 9 & 10)
- LINE ABOVE GROUND
- 95-WW: SANITARY SEWER SYSTEM  
 92-WW: SEWER WATER SYSTEM  
 92-FW: DRAIN WATER  
 91-WF: FIRE WATER SYSTEM  
 CB: STORAGE TANK  
 FB: WATER TREATMENT PLANT  
 MH: MANHOLE  
 CB: CATCH BASIN  
 VB: VALVE BOX

REV	DATE	DESCRIPTION	PRO.	CHK.	APP.
07	21-01-2016	AS-BUILT	AV	JAV	FBH
06	14-01-2016	APPROVED FOR CONSTRUCTION	AV	JAV	FBH
05	14-01-2016	APPROVED FOR CONSTRUCTION	AV	JAV	FBH
03	03-01-2016	APPROVED FOR CONSTRUCTION	AV	LGW	FBH
02	11-01-2015	APPROVED FOR DESIGN	CS	LGW	FBH

REV	DATE	DESCRIPTION	PRO.	CHK.	APP.
TAN BURRUP PROJECT					
YARRA PULBARRA NITRATES PTY. LTD. BURRUP PENINSULA, WESTERN AUSTRALIA 915 MTPD TAN PLANT					
SCALE: 1:2500 PROJECT NO.: 2-300-329-DWG-TRE-3004					
DATE: 21-01-2016 FILE NO.: 2-300-329-DWG-TRE-3004					

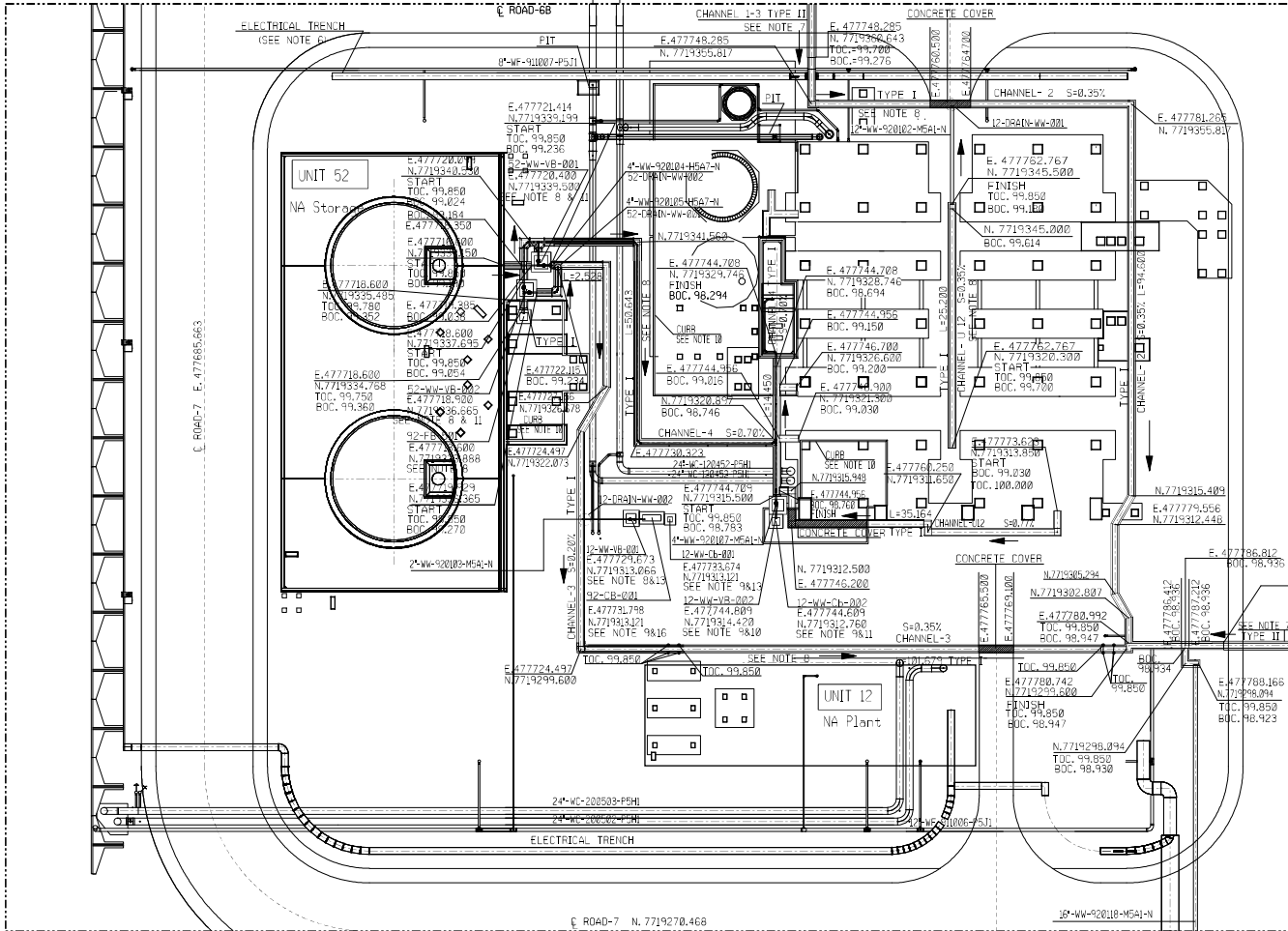
DRAWING LIMIT N. 7719366.143

UNDERGROUND RAIN WATER  
UNITS 71



DRAWING LIMIT E. 477665.163

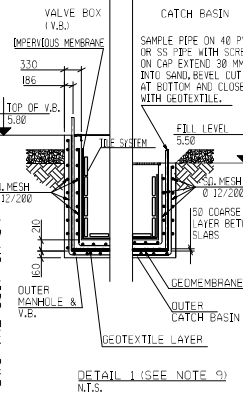
MATCHLINE N. 7719366.143 FOR CONTINUATION SEE DWG. 2-300-329-DWG-TRE-3017 Sh 06



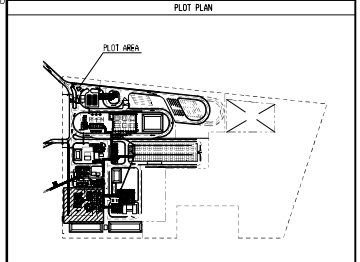
MATCHLINE N. 7719270.468 FOR CONTINUATION SEE DWG. 2-300-329-DWG-TRE-3017 Sh 15

MATCHLINE SEE DWG. 2-300-329-DWG-TRE-3017 Sh 09

MATCHLINE SEE DWG. 2-300-329-DWG-TRE-3017 Sh 10



REFERENCE DWG.	NO.
AMMONIUM NITRATE PLANT OVERALL PLOT PLAN	2-300-329-DWG-TRE-8595
GENERAL IMPLANTATION MODIFIED TOPOGRAPHY	2-300-329-DWG-TRE-2946
CIVIL WORK STANDARD DETAIL	2-300-329-STD-TRE-3501
ROADS & ACCESS PLAN (SH 1 SH 5)	2-300-329-DWG-TRE-2978
PERIMETER CHANNELS NORTH-PLAN SECTIONS A, DETAILS SH 1 & SH 2	2-300-329-DWG-TRE-2980
GENERAL PLAN U/G CONTAMINATED WATER & SANITARY SEWER (SH 10)	2-300-329-DWG-TRE-3017
LIGHTING NETWORK UNDERGROUND PLAN	2-300-329-DWG-TRE-8919
GENERAL PLAN U/G RAIN WATER (SH 10)	2-300-329-DWG-TRE-3084
FIRE & GAS PROTECTION EQUIPMENT LOCATION	2-300-329-DWG-TRE-6671,6673, 6677,6678,6679,6688
U/G PIPING ISOMETRIC RAIN/CONTAMINATED WATER & SANITARY SEWER	2-300-329-DWG-TRE-3032
U/G MANHOLE LAYOUT TABLE	2-300-329-DWG-TRE-3082
U/G CONTAMINATED WATER & SANITARY SEWER PLAN DETAILS SH 12	2-300-329-DWG-TRE-3017
EARTHING LAY-OUT OVERALL EARTHING WELLS	2-300-329-DWG-TRE-8913



- NOTES**
- 1-DIMENSIONS ARE INDICATED IN METERS.
  - 2-COORDINATES IN METERS
  - 3-FOR DETAILS CLEAN SURFACE WATER POND SEE 2-300-329-DWG-TRE-2964
  - 4-FOR INFORMATION ON THE DESIGN ELEMENTS OF THE ROADS, COORDINATES, LENGTH, RADIUS, ETC. SEE DWG. 2-300-329-DWG-TRE-2979 Sh 5
  - 5-EL. 99.850 IS THE HIGH POINT OF THE ROAD UNIT AND CORRESPONDS TO EL. 5.650 AHD.
  - 6-FOR DETAIL SEE DWG. 2-300-329-DWG-TRE-8919
  - 7-DETAIL OF ROAD CROSSING FOR CONCRETE CHANNEL SEE DWG. 2-300-329-DWG-TRE-3017 Sh 14.
  - 8-CONCRETE CHANNEL & VALVE BOX WILL BE COATED WITH VINYL ESTER RESIN.
  - 9-CATCH BASIN, MANHOLE & PIT DUAL CONTAMINATED WITH LEAK DETECTION - SEE DETAIL.
  - 10-CURB WILL BE COATED WITH IMPERVIOUS MEMBRANE AND TILE SYSTEM.
  - 11-FOR DETAIL OF V.B. SEE DWG. 2-300-329-DWG-TRE-3017 Sh 13.
  - 12-FOR DETAIL OF PIT, SEE DWG. 2-300-329-DWG-TRE-3085
  - 13-FOR DETAIL, SEE DWG. 2-300-329-DWG-TRE-3017 Sh 14.
  - 14-FOR DETAIL OF SEE DWG. 2-300-329-STD-TRE-3501 Sh 08
  - 15-FOR DETAIL OF V.B. SEE DWG. 2-300-329-STD-TRE-3507
  - 16-FOR DETAIL OF SEE DWG. 2-300-329-DWG-TRE-3346
  - 17-FOR DETAIL OF SEE DWG. 2-300-329-DWG-TRE-3348

**LEGEND**

TOC:-	TOP OF CHANNEL
BOC:-	BOTTOM OF CHANNEL
S=	SLOPE
TYPE I:	CHANNEL TYPE 2, COVER TYPE D (STD-TRE-3501 Sh 9 & 10)
TYPE II:	CHANNEL TYPE 2, COVER TYPE C (STD-TRE-3501 Sh 9 & 10)
---	LINE ABOVE GROUND
95-WW:	SANITARY SEWER SYSTEM
90-WW:	SEWER WATER SYSTEM
92-WW:	DRAIN WATER
91-WF:	FIRE WATER SYSTEM
FB :	STORAGE TANK
CB :	CATCH BASIN
CH :	WATER TREATMENT PLANT
MH :	MANHOLE
VB :	VALVE BOX

REV	DATE	DESCRIPTION	APPD.	CHKD.	APPD.
10	29-09-2016	AS-BUILT			
09	12-04-2014	ISSUED FOR CONSTRUCTION			
08	04-04-2014	ISSUED FOR CONSTRUCTION			

TAN BURRUP PROJECT

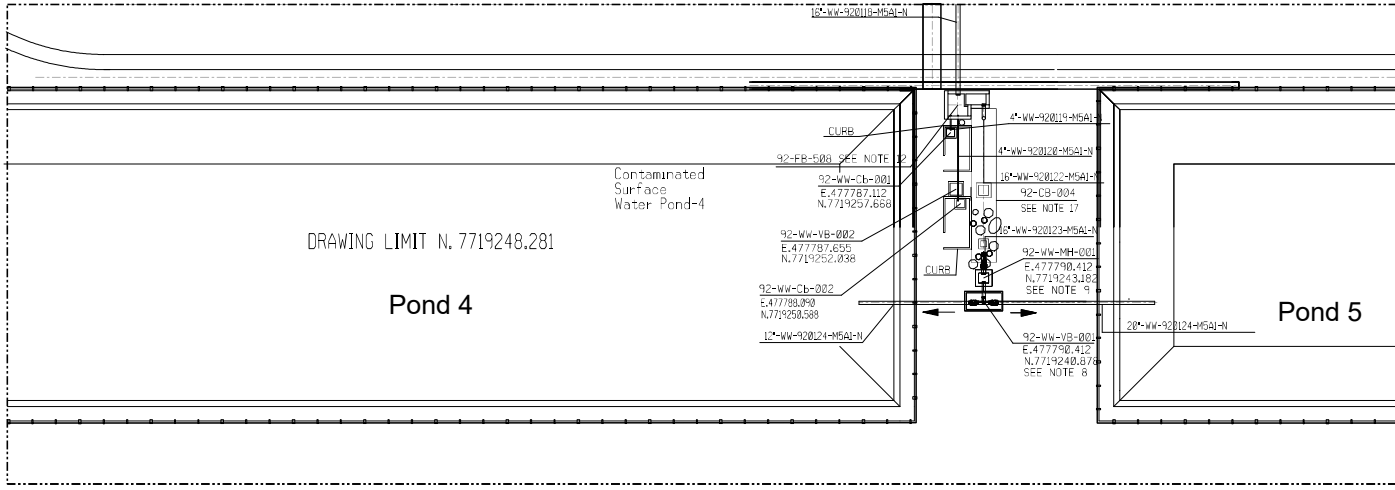
HORA PHOSPHORUS NITRATES PTY. LTD.  
BURRUP PENINSULA, WESTERN AUSTRALIA  
915 MTPD TAN PLANT

Drawn by: JAMES  
DWG NO: 2-300-329-DWG-TRE-3017  
Scale: 1:100  
Date: 12/04/2014  
File No: 2-300-329-DWG-TRE-3017

UG/CONTAMINATED WATER & SANITARY SEWER PLAN  
UNITS 12 & 52



MATCHLINE N. 7719270.468 FOR CONTINUATION SEE DWG. 2-300-329-DWG-TRE-3017 Sh 08



DRAWING LIMIT E. 477693.052

DRAWING LIMIT N. 7719248.281

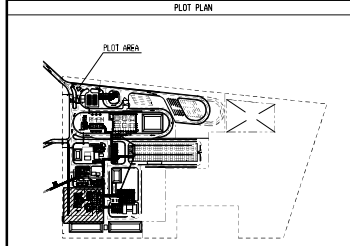
Pond 4

Pond 5

DRAWING LIMIT N. 7719222.630

DRAWING LIMIT E. 477831.921

REFERENCE DRG.	NO.
AMMONIUM NITRATE PLANT OVERALL PLOT PLAN	2-300-329-DWG-TRE-0505
GENERAL IMPLANTATION MODIFIED TOPOGRAPHY	2-300-329-DWG-TRE-2946
CIVIL WORK STANDARD DETAIL	2-300-329-STD-TRE-2501
ROADS & ACCESS PLAN (SH 1-SH 5)	2-300-329-DWG-TRE-2978
PERIMETRAL CHANNELS NORTH-PLAN SECTIONS A, DETAILS 5, 6, 11, 12	2-300-329-DWG-TRE-2968
GENERAL PLAN U/G CONTAMINATED WATER & SANITARY SEWER (SH 00)	2-300-329-DWG-TRE-3017
LIGHTING NETWORK UNDERGROUND PLAN	2-300-329-DWG-TRE-0919
GENERAL PLAN U/G RAIN WATER (SH 00)	2-300-329-DWG-TRE-3004
FIRE & GAS PROTECTION EQUIPMENT LOCATION	2-300-329-DWG-TRE-6671,6673, 6677,6678,6679,6688
U/G PIPING ISOMETRIC RAIN/CONTAMINATED WATER & SANITARY SEWER	2-300-329-DWG-TRE-3032
U/G MANHOLE LAYOUT TABLE	2-300-329-DWG-TRE-3002
U/G CONTAMINATED WATER & SANITARY SEWER PLAN DETAILS SH 13 & 14	2-300-329-DWG-TRE-3017
EARTHING LAY-OUT OVERALL EARTHING WELLS	2-300-329-DWG-TRE-0913



- NOTES**
- DIMENSIONS ARE INDICATED IN METERS.
  - COORDINATES IN METERS
  - FOR DETAILS CLEAN SURFACE WATER POND SEE 2-300-329-DWG-TRE-2964
  - FOR INFORMATION ON THE DESIGN ELEMENTS OF THE ROADS; COORDINATES, LENGTH, RADIUS, ETC. SEE DWG. 2-300-329-DWG-TRE-2979 Sh 5
  - EL. 99.850 IS THE HIGH POINT OF THE ROAD UNIT AND CORRESPONDS TO EL. 5.650 AHD.
  - FOR DETAIL SEE DWG. 2-300-329-DWG-TRE-0919
  - DETAIL OF ROAD CROSSING FOR CONCRETE CHANNEL SEE DWG. 2-300-329-DWG-TRE-3017 Sh 14.
  - CONCRETE CHANNEL & VALVE BOX WILL BE COATED WITH VINYL ESTER RESIN.
  - CATCH BASIN, MANHOLE & PIT DUAL CONTAMINATED WITH LEAK DETECTION - SEE DETAIL 1.
  - CURB WILL BE COATED WITH IMPERVIOUS MEMBRANE AND TILE SYSTEM.
  - FOR DETAIL OF V.B. SEE DWG. 2-300-329-DWG-TRE-3017 Sh 13.
  - FOR DETAIL OF PIT, SEE DWG. 2-300-329-DWG-TRE-3005
  - FOR DETAIL, SEE DWG. 2-300-329-DWG-TRE-3017 Sh 14.
  - FOR DETAIL OF SEE DWG. 2-300-329-STD-TRE-0501 Sh. 08
  - FOR DETAIL OF V.B. SEE DWG. 2-300-329-STD-TRE-3507
  - FOR DETAIL OF SEE DWG. 2-300-329-DWG-TRE-3346
  - FOR DETAIL OF SEE DWG. 2-300-329-DWG-TRE-3348

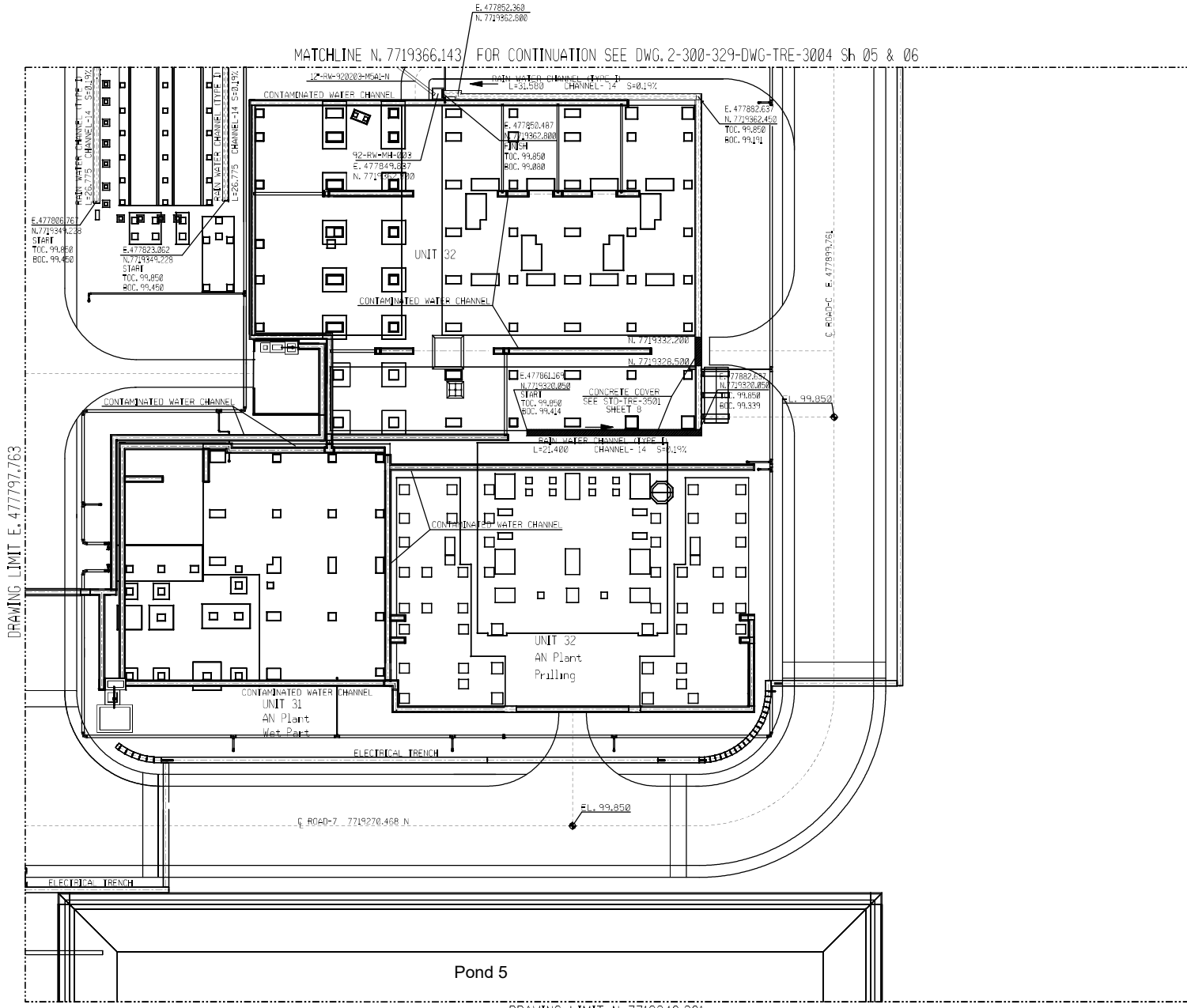
**LEGEND**

TOC:-	TOP OF CHANNEL
BOC:-	BOTTOM OF CHANNEL
S=	SLOPE
TYPE I:	CHANNEL TYPE 2, COVER TYPE D (STD-TRE-3501 Sh 9 & 10)
TYPE II:	CHANNEL TYPE 2, COVER TYPE C (STD-TRE-3501 Sh 9 & 10)
---	LINE ABOVE GROUND
95-WW:	SANITARY SEWER SYSTEM
92-WW:	SEWER WATER SYSTEM
92-RW:	DRAIN WATER
91-WF:	FIRE WATER SYSTEM
FB :	STORAGE TANK
CB :	WATER TREATMENT PLANT
MH :	MANHOLE
Cb :	CATCH BASIN
VB :	VALVE BOX

NO.	REV.	DATE	BY	CHKD.	APPD.

00	29.08.16	AS-BUILT			
REV	DATE	DESCRIPTION	PREP.	CHKD.	APPD.
		TAN BURRUP PROJECT			
		HARA PERABA NITRATES PTY. LTD. BURRUP PENINSULA, WESTERN AUSTRALIA			
		915 MTPD TAN PLANT			

UG/CONTAMINATED WATER & SANITARY SEWER PLAN  
UNITS 12 & 52



MATCHLINE N. 7719366.143 FOR CONTINUATION SEE DWG. 2-300-329-DWG-TRE-3004 Sh 05 & 06

DRAWING LIMIT E. 477797.763

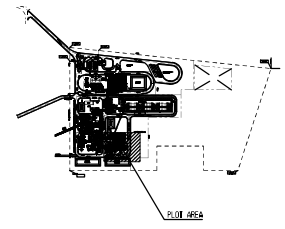
DRAWING LIMIT E. 477944.363

Pond 5

DRAWING LIMIT N. 7719248.281

REFERENCE DWG.	No.
AMMONIUM NITRATE PLANT OVERALL PLOT PLAN	2-300-329-DWG-TRE-0505
GENERAL IMPLANTATION MODIFIED TOPOGRAPHY	2-300-329-DWG-TRE-2946
CIVIL WORK STANDARD DETAIL	2-300-329-STD-TRE-3501
ROADS & ACCESS PLAN (SH 1-SH 5)	2-300-329-DWG-TRE-2978
PERIMETRAL CHANNELS NORTH-PLAN, SECTIONS & DETAILS (SH 1 & SH 2)	2-300-329-DWG-TRE-2968
GENERAL PLAN U/G CONTAMINATED WATER & SANITARY SEWER (SH 01)	2-300-329-DWG-TRE-3017
LIGHTING NETWORK UNDERGROUND PLAN	2-300-329-DWG-TRE-0919
GENERAL PLAN U/G RAIN WATER (SH 01)	2-300-329-DWG-TRE-3004
FIRE & GAS PROTECTION EQUIPMENT LOCATION	2-300-329-DWG-TRE-6071,6673, 6677,6678,6679,6680
U/G TIPPING ISOMETRIC RAIN/CONTAMINATED WATER & SANITARY SEWER	2-300-329-DWG-TRE-3032
CLEAN SURFACE WATER POND 1-1	2-300-329-DWG-TRE-2964

KEY PLAN



GENERAL NOTES

- 1- DIMENSIONS ARE INDICATED IN METERS.
- 2- COORDINATES IN METERS
- 3- FOR DETAILS CLEAN SURFACE WATER POND SEE 2-300-329-DWG-TRE-2964
- 4- FOR INFORMATION ON THE DESIGN ELEMENTS OF THE ROADS, COORDINATES, LENGTH, RADIUS, ETC. SEE DWG. 2-300-329-DWG-TRE-2978 SH.5
- 5- EL. 99.850 IS THE HIGH POINT OF THE ROAD UNIT AND CORRESPONDS TO EL. 5.850 AHD.
- 6- FOR DETAIL SEE DWG 2-300-329-DWG-TRE-3004 SH. 09

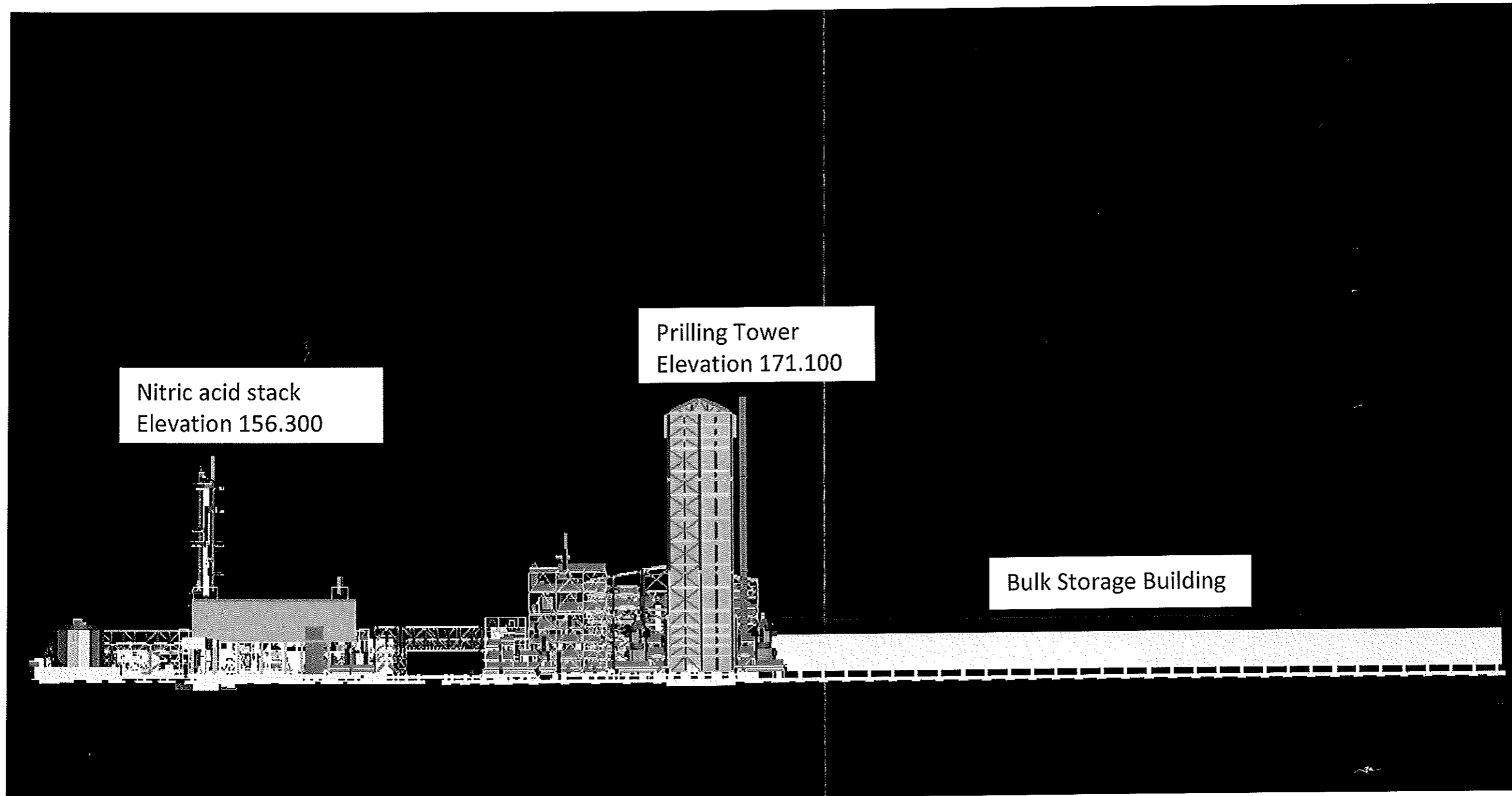
LEGEND

- TOC = TOP OF CHANNEL  
 BOC = BOTTOM OF CHANNEL  
 S = SLOPE  
 TYPE I : CHANNEL TYPE 2 , COVER TYPE D (STD-TRE-3501 SH 9 & 10)  
 TYPE II : CHANNEL TYPE 2 , COVER TYPE C (STD-TRE-3501 SH 9 & 10)
- LINE ABOVE GROUND  
 95-WH : SANITARY SEWER SYSTEM  
 92-WH : SEWER WATER SYSTEM  
 92-RW : DRAIN WATER  
 91-WF : FIRE WATER SYSTEM  
 FB : STORAGE TANK  
 CB : WATER TREATMENT PLANT  
 MH : MANKHOLE  
 Cb : CATCH BASIN  
 VB : VALVE BOX

REV	DATE	DESCRIPTION	PREP.	CHK.	APPR.
07	21-01-2015	AS-BUILT	AAV	JAV	FBH
06	16-01-2015	APPROVED FOR CONSTRUCTION	AAV	JAV	FBH
05	16-01-2015	APPROVED FOR CONSTRUCTION	AAV	JAV	FBH
03	15-01-2015	APPROVED FOR CONSTRUCTION	AAV	JAV	FBH
02	11-01-2015	APPROVED FOR DESIGN	AAV	JAV	FBH

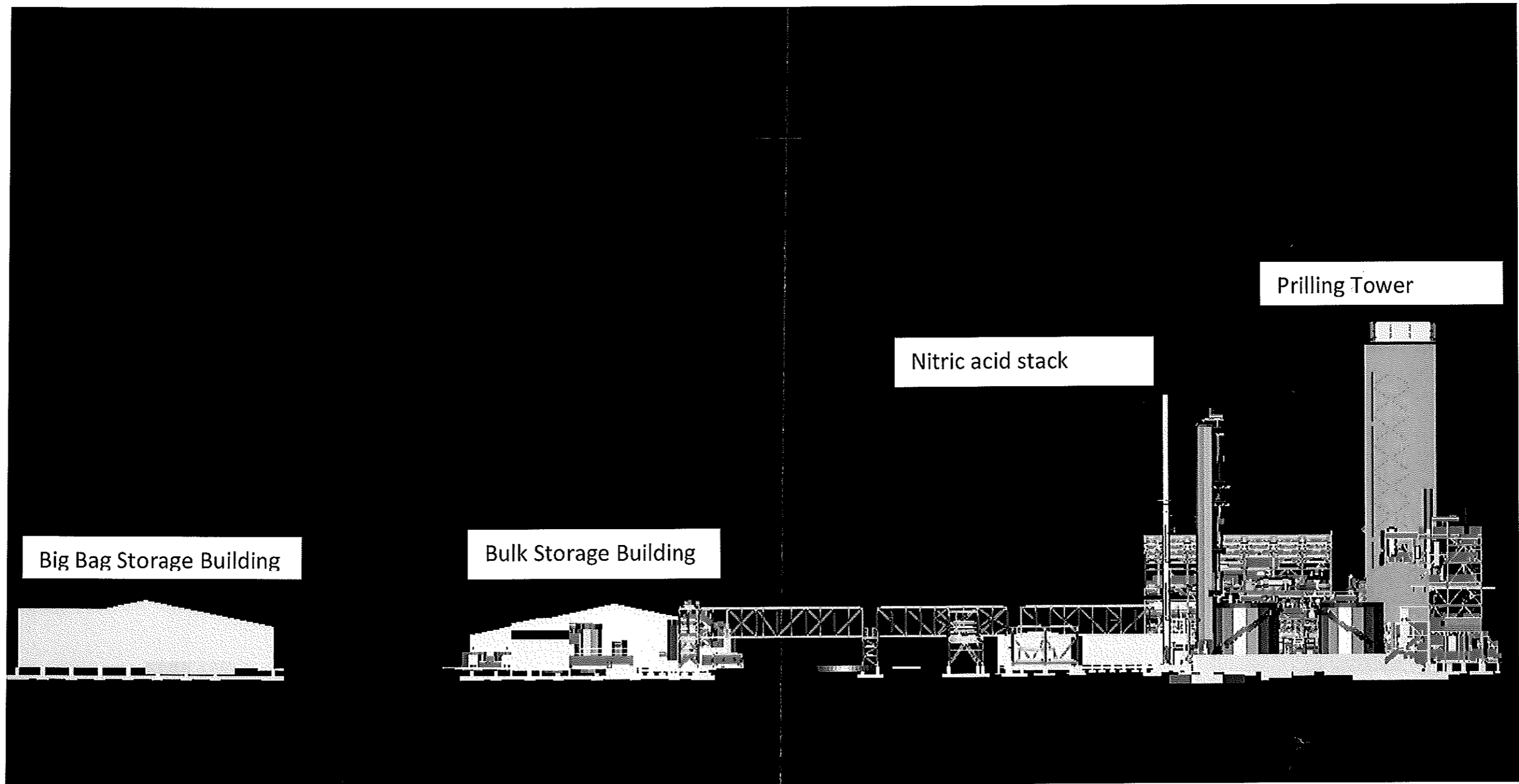
<b>TAN BURRUP PROJECT</b> YARRA PULSARA NITRATES PTY. LTD. BURRUP PENINSULA, WESTERN AUSTRALIA 915 MTPD TAN PLANT			SCALE : 1:250 TYPICAL : 2-300-329-DWG-TRE-3004
THE INFORMATION CONTAINED HEREIN IS THE PROPERTY OF BURRUP PENINSULA NITRATES PTY. LTD. AND IS TO BE USED ONLY FOR THE PROJECT AND SITE SPECIFICALLY IDENTIFIED. IT IS NOT TO BE REPRODUCED OR TRANSMITTED IN ANY FORM OR BY ANY MEANS, ELECTRONIC OR MECHANICAL, INCLUDING PHOTOCOPYING, RECORDING, OR BY ANY INFORMATION STORAGE AND RETRIEVAL SYSTEM, WITHOUT THE WRITTEN PERMISSION OF BURRUP PENINSULA NITRATES PTY. LTD.			FILE NO : 2-300-329-DWG-TRE-3004

UNDERGROUND RAIN WATER  
UNITS 31 & 32



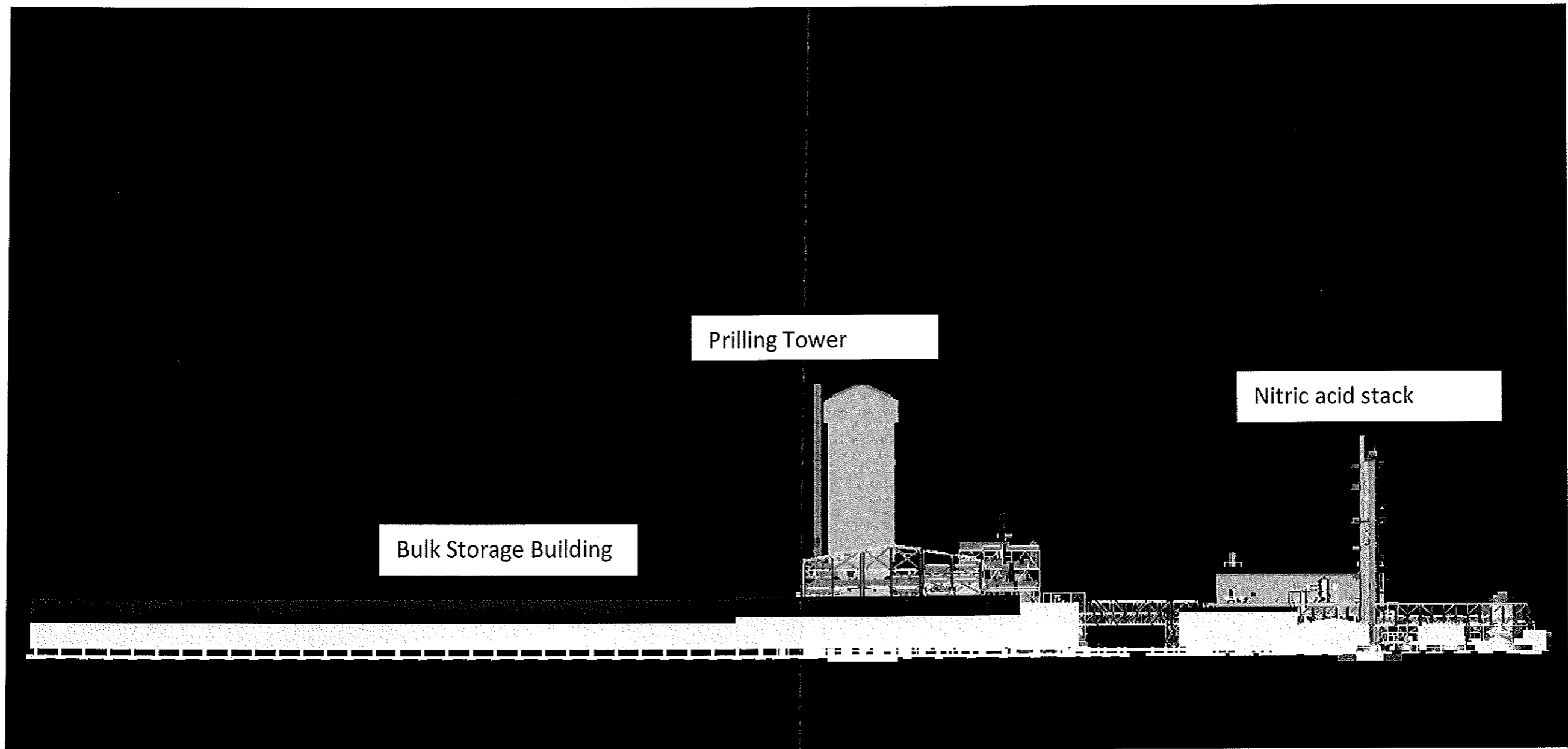
TAN Burrup Project – North view

<b>SHIRE OF ROEBOURNE</b>	
<b>TOWN PLANNING APPROVAL</b>	
THIS IS THE PLAN REFERRED TO BY	
CONDITION	<u>1</u>
OF APPROVAL No	<u>P2958</u>
SIGNED	<u><i>[Signature]</i></u>
DATE	<u>23/5/2013</u>



TAN Burrup Project – East view

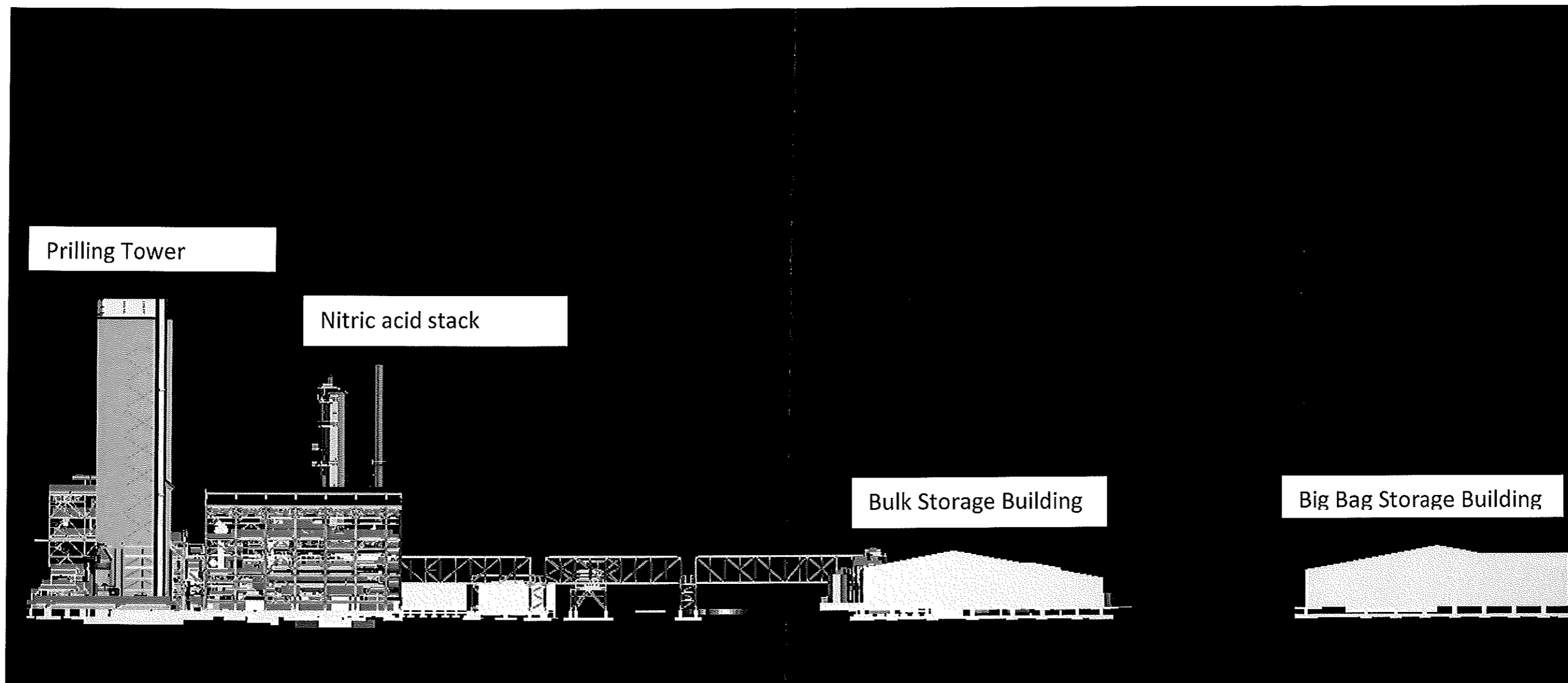
SHIRE OF ROEBOURNE  
TOWN PLANNING APPROVAL  
THIS IS THE PLAN REFERRED TO BY  
CONDITION 1  
OF APPROVAL No P2958  
SIGNED [Signature]  
DATE 23/5/2013



TAN Burrup Project – South view

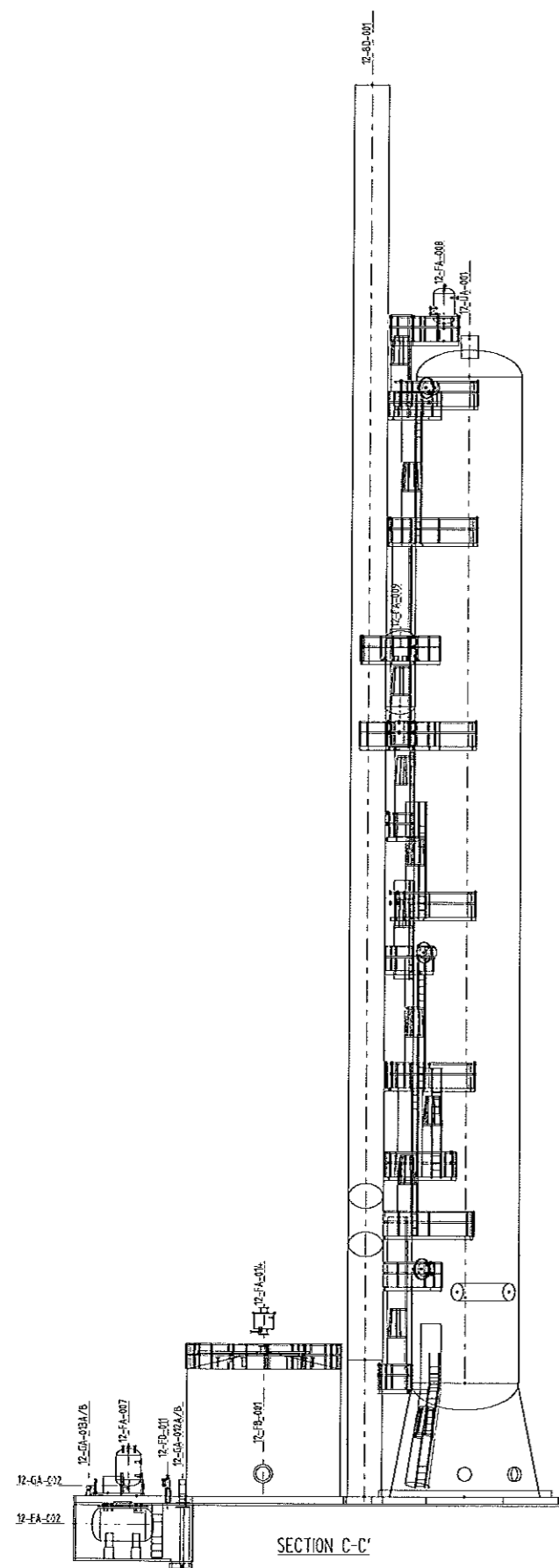
SHIRE OF ROEBOURNE	
TOWN PLANNING APPROVAL	
THIS IS THE PLAN REFERRED TO BY	
CONDITION	<u>1</u>
OF APPROVAL No	<u>P2958</u>
SIGNED	<u><i>J. Hawley</i></u>
DATE	<u>23/5/2013</u>



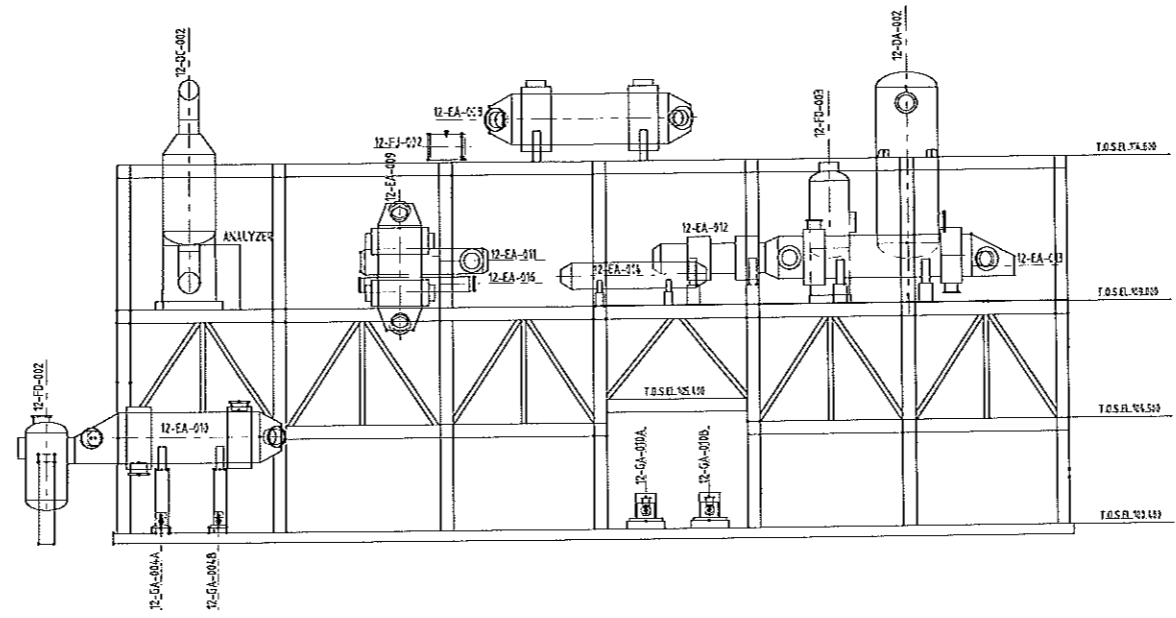


TAN Burrup Project – West view

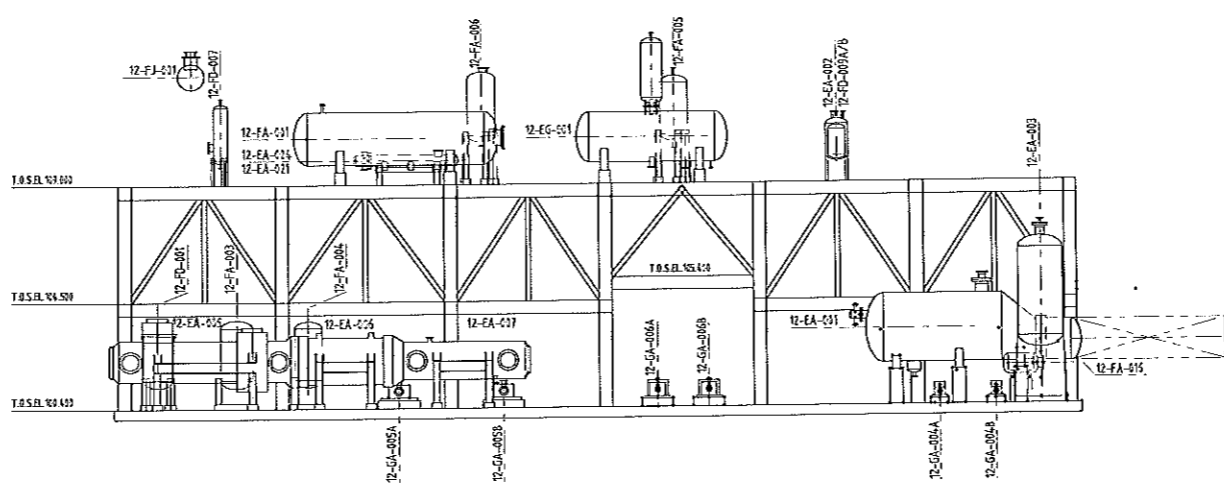
<b>SHIRE OF ROEBOURNE</b>	
<b>TOWN PLANNING APPROVAL</b>	
THIS IS THE PLAN REFERRED TO BY	
CONDITION	_____ 1 _____
OF APPROVAL No	_____ P2958 _____
SIGNED	_____ <i>[Signature]</i> _____
DATE	_____ 23/5/2013 _____



SECTION C-C'



SECTION B-B'

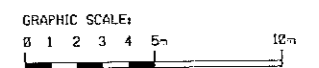


SECTION A-A'

EQUIPMENT LIST			REFERENCE Dwg.	NO.
ITEM NUMBER	DESCRIPTION	ELEVATION	OVERALL PLOT PLAN BURRUP AMMONIA NITRIC PLAN	2-302-329-CVS-TRE-0005
12-00-001	STACK POLE	EL. 153.372	PLOT PLAN GROUND LEVEL NITRIC ACID PROCESS UNIT 12	2-302-329-CVS-TRE-0009
12-04-001	ABSORPTION TOWER	EL. 153.312	PLOT PLAN EL. 153.320 8-BOVE NITRIC ACID PROCESS UNIT 12	2-302-329-CVS-TRE-0014
12-04-002	BLENDING TOWER	EL. 153.320		
12-0C-002	GENC REACTOR	EL. 152.338		
12-EA-001	AMMONA VAPORIZER	EL. 152.400		
12-EA-002	AMMONA GENC VAPORIZER	EL. 150.020		
12-EA-003	AMMONA AUXILIAR VAPORIZER	EL. 152.515		
12-EA-004	RECOVERY COOLER	EL. 152.232		
12-EA-007	ECONOMIZER	EL. 152.232		
12-EA-008	TAIL GAS HEATER I	EL. 156.350		
12-EA-009	TAIL GAS HEATER II	EL. 155.520		
12-EA-010	LP GAS COOLER CONDENSER	EL. 151.048		
12-EA-011	BOILER WATER HEATER	EL. 150.820		
12-EA-012	TAIL GAS PFDHEATER	EL. 150.250		
12-EA-013	HP GAS COOLER CONDENSER	EL. 150.820		
12-EA-014	TAIL GAS START-UP HEATER	EL. 150.252		
12-EA-016	SECONDARY AIR COOLER	EL. 150.922		
12-EA-021	COOLER P-PHOS COOLER	EL. 150.925		
12-EG-001	DRABATOR	EL. 150.820		
12-FA-001	STEAM DR-Y	EL. 150.820		
12-FA-002	ACID DRAIN VESSEL	EL. 150.325		
12-FA-003	OXYGEN SCAVENGER DOSSING VESSEL	EL. 150.520		
12-FA-004	PHOSPHATES DOSSING VESSEL	EL. 150.520		
12-FA-005	CONCENTRATES FLUSH VESSEL	EL. 150.820		
12-FA-006	ACID P-PHOS VESSEL	EL. 150.820		
12-FA-007	12-FD-011 VENT WASHING VESSEL	EL. 150.020		
12-FA-008	COOLED WATER EXPANSION DR-Y	EL. 152.020		
12-FA-009	CHILLED WATER EXPANSION DR-Y	EL. 150.020		
12-FA-010	NITRIC ACID VENT SEALS VESSEL	EL. 150.320		
12-FA-015	AMMONA STRIPPER	EL. 150.825		
12-FB-001	START UP TANK	EL. 150.320		
12-FD-001	STEAM TURBINE DR-YLET SEPARATOR	EL. 150.520		
12-FD-002	PROCESS GAS DR-YLET SEPARATOR	EL. 150.520		
12-FD-003	TAIL GAS DR-YLET SEPARATOR	EL. 150.250		
12-FD-007	AMMONA GAS FILTER	EL. 150.020		
12-FD-008A	LIQUID AMMONA FILTER	EL. 150.020		
12-FD-008B	LIQUID AMMONA FILTER	EL. 150.020		
12-FD-011	NITRIC ACID FILTER	EL. 150.520		
12-FJ-001	AMMONA GAS/AIR MOVER	EL. 150.220		
12-FJ-002	AMMONA GAS/TAIL GAS MOVER	EL. 150.220		
12-GA-001	START-UP ACID P-P	EL. 150.725		
12-GA-001A	DILUTED ACID P-P A	EL. 150.822		
12-GA-001B	DILUTED ACID P-P B	EL. 150.822		
12-GA-005A	BW REGRULATION P-P A	EL. 151.222		
12-GA-005B	BW REGRULATION P-P B	EL. 151.222		
12-GA-006A	BW P-P A	EL. 151.022		
12-GA-006B	BW P-P B	EL. 151.022		
12-GA-008A	OXYGEN SCAVENGER P-P A	EL. 150.820		
12-GA-008B	OXYGEN SCAVENGER P-P B	EL. 150.820		
12-GA-009A	PHOSPHATES P-P A	EL. 150.922		
12-GA-009B	PHOSPHATES P-P B	EL. 150.922		
12-GA-010A	CHILLED WATER P-P A	EL. 151.022		
12-GA-010B	CHILLED WATER P-P B	EL. 151.022		
12-GA-012A	ACID DRAIN P-P A	EL. 151.022		
12-GA-012B	ACID DRAIN P-P B	EL. 151.022		
12-GA-018A	12-FB-011 VENT WASHING ACID P-P A	EL. 150.020		
12-GA-018B	12-FB-011 VENT WASHING ACID P-P B	EL. 150.020		
12-GA-020A	AMMONA DOSSING P-P A	EL. 150.822		
12-GA-020B	AMMONA DOSSING P-P B	EL. 150.822		

NOTES  
 1. ALL COORDINATES ARE IN METERS, ELEVATION AND ELEVATION ARE IN MILLIMETERS.  
 2. ELEVATIONS ARE REFERRED TO ALIENEST TANGENT LINE FOR COLLING REACTORS AND VERTICAL VESSELS.  
 3. CENTER LINE FOR HORIZONTAL VESSELS AND COMPRESSORS.  
 4. CENTER LINE DRYLINE FOR HORIZONTAL SHT EQUIPMENT.  
 5. BOTTOM OF SUPPORT FOR VERTICAL SHT EQUIPMENT.  
 6. CENTER LINE/SECTION FOR PUMPS.  
 7. TAIL FOR SHT MOUNTED BRACKET.  
 8. DIAL FOR STORAGE TANKS.

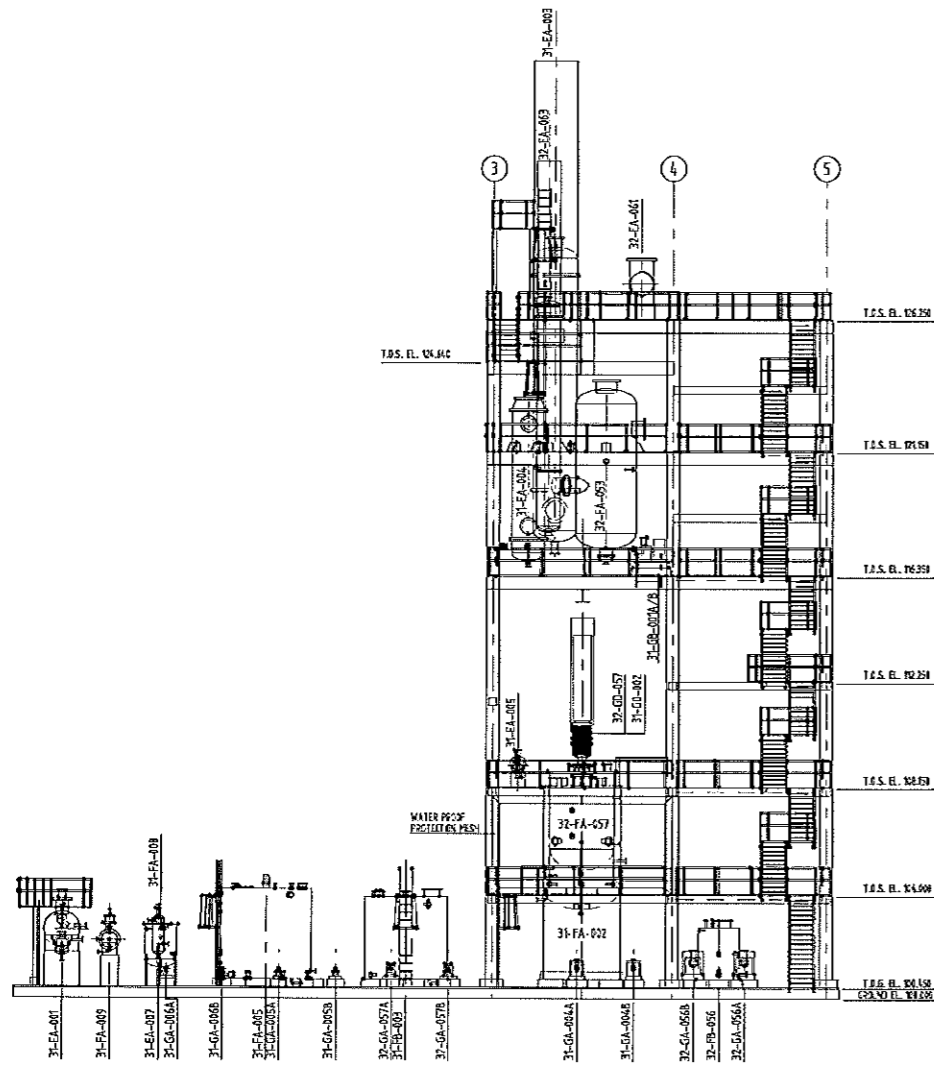
**SHIRE OF ROEBOURNE**  
**TOWN PLANNING APPROVAL**  
 THIS IS THE PLAN REFERRED TO BY  
 CONDITION 1  
 OF APPROVAL No P2958  
 SIGNED [Signature]  
 DATE 23/5/2013



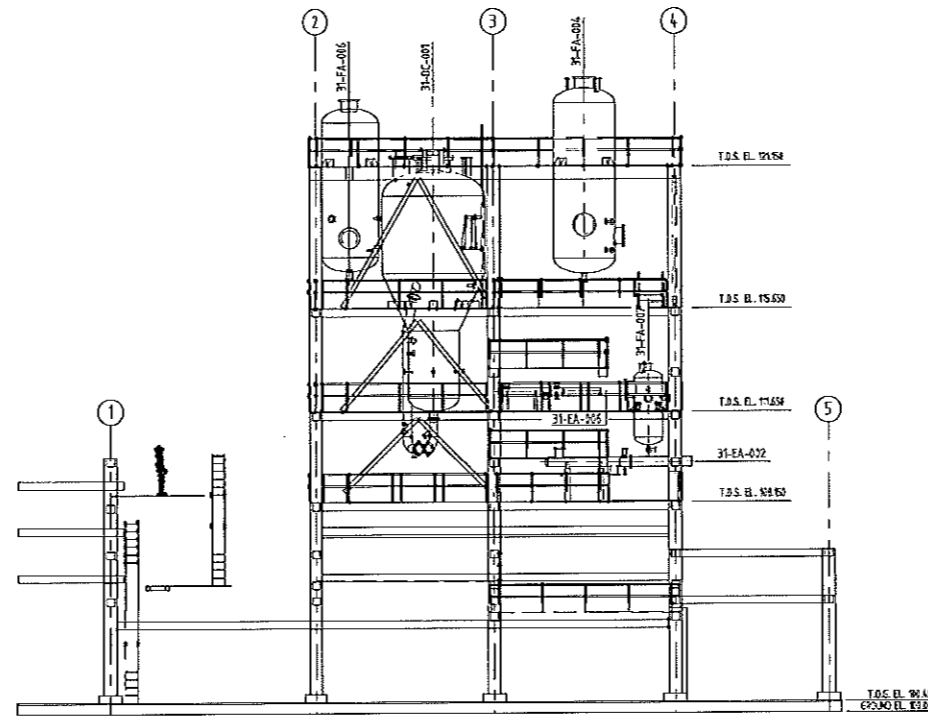
REV	DATE	DESCRIPTION	BY	CHK	APP
01	11-22-12	APPROVED FOR DESIGN	FW	FW	FW
02	02-29-12	APPROVED FOR DESIGN	FW	FW	FW
03	12-27-12	ISSUED FOR APPROVAL	FW	FW	FW
04			FW	FW	FW

TAN BURRUP PROJECT  
 BURRUP NITRATES PTY LTD  
 BURRUP PENINSULA WESTERN AUSTRALIA  
 825 MIDO TAN PLANT

YARA TAN BURRUP  
 ELEVATION SECTIONS  
 NITRIC ACID PROCESS UNIT 12



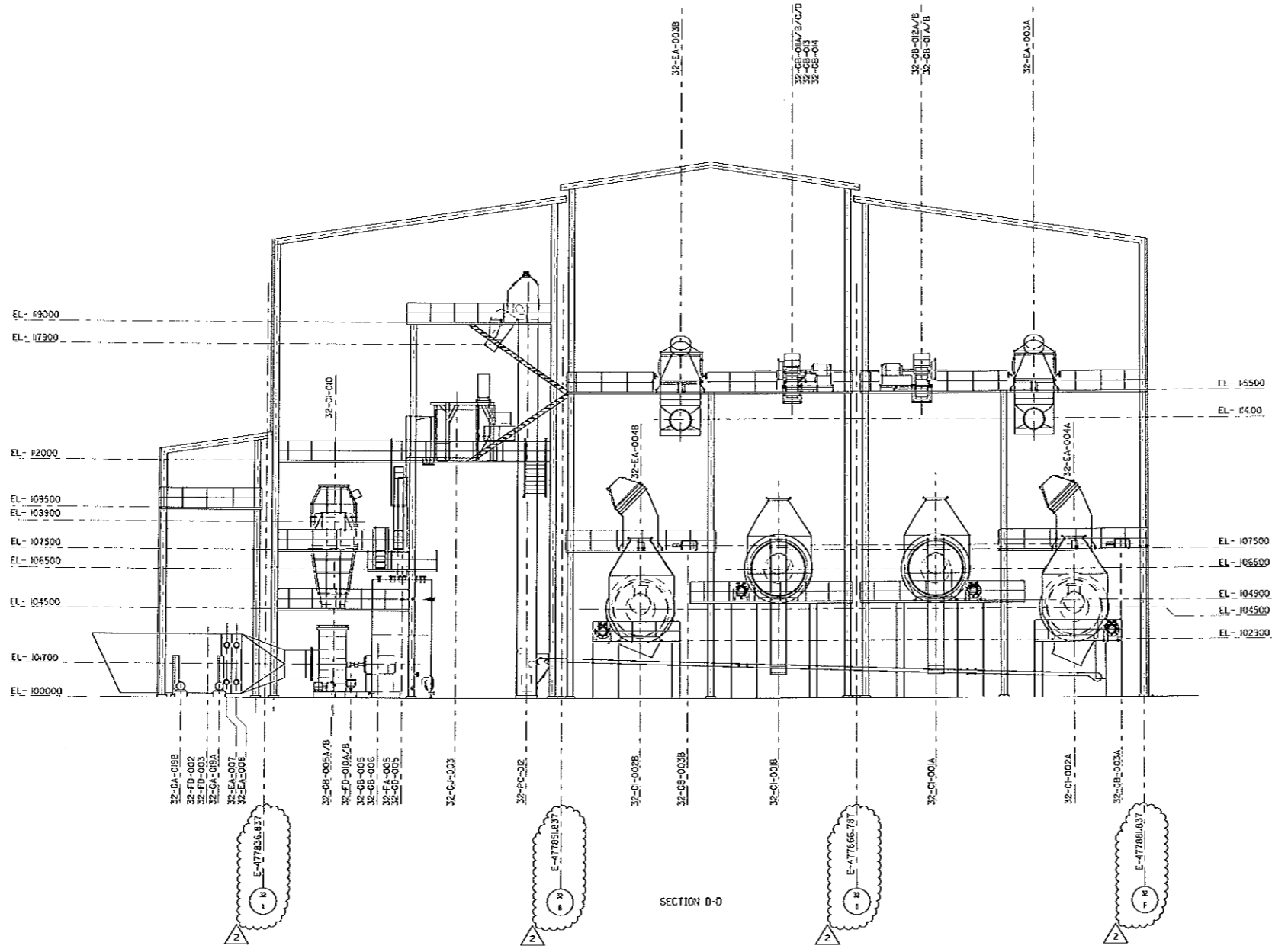
SECTION 1-1



ITEM NUMBER	EQUIPMENT LIST DESCRIPTION	ELEVATION
32-CI-221A/B	PREDRYER A/B	E.L. 105500
32-CI-222A/B	DRYER A/B	E.L. 104500
32-CI-210	FLUIDIZED BED COOLER	E.L. 106500
32-EA-223A/B	PREDRYER AIR HEATER A/B	E.L. 114200
32-EA-224A/B	DRYER AIR HEATER A/B	E.L. HOLD
32-EA-227	FLUIDIZATION AIR CHILLER	E.L. 101700
32-EA-228	FLUIDIZATION AIR HEATER	E.L. HOLD
32-FA-225	AN DISSOLVING TANK	E.L. 103200
32-FD-222	AIR INTAKE FILTER	E.L. HOLD
32-FD-223	DROPLET SEPARATOR	E.L. 104400
32-FD-210A/B	DISSOLUTION TANK FILTER	E.L. 103300
32-CB-233A/B	DRYER FAN A/B	E.L. HOLD
32-CB-226	FLUIDIZED BED COOLER FAN 2	E.L. 101700
32-CB-228	FLUIDIZED BED COOLER FAN 1	E.L. 101700
32-CB-211A/B/C/D	PREDRYER OUTLET FAN A/B/C/D	E.L. 105500
32-CB-212A/B/C/D	DRYER OUTLET FAN A/B/C/D	E.L. 106500
32-CB-213	VENTILATION FAN	E.L. 101500
32-CB-214	DEDUSTING FAN	E.L. 101500
32-OD-225	AN DISSOLVING TANK AGITATOR	E.L. HOLD
32-OJ-203	SCREEN	E.L. 102200
32-PC-212	SCREEN FEEDING ELEVATOR	E.L. HOLD

REFERENCE Dwg.	NO.
GENERAL PLOT PLAN	2-30-2010-17E-200
PLOT PLAN FOUND LEVEL, 1/2500	2-30-2010-17E-203
PLOT PLAN ELEV. 1/2000	2-30-2010-17E-204
PLOT PLAN ELEV. 1/500	2-30-2010-17E-205
PLOT PLAN ELEV. AT TOP ROOF	2-30-2010-17E-206

- NOTES**
1. ALL COORDINATES ARE INCORPORATED IN METERS, COORDINATE AND ELEVATION ARE IN METERS.
  2. REFERENCES ARE REFERRED TO:
    - A. LATEST TENDR LINE FOR GULANS REACTOR AND VERTICAL VESSELS.
    - B. CENTER LINE FOR HORIZONTAL VESSELS AND COMPRESSORS.
    - C. CENTER LINE FOR HORIZONTAL VESSELS AND COMPRESSORS.
    - D. CENTER LINE FOR HORIZONTAL VESSELS AND COMPRESSORS.
    - E. BOTTOM OF SUPPORT FOR VERTICAL VESSEL BOOMERS.
    - F. TAG FOR 300 MOUNTED FRAME.
    - G. TAG FOR 300 MOUNTED FRAME.
    - H. CENTER SECTION LINE FOR PUMPS.
  3. RESERVED SPACE FOR MEDIANAL CONVEYER SUPPORTS & OFF SPEL OFF. SEE 2D BULK MATERIAL ELEV.



**SHIRE OF ROEBOURNE  
TOWN PLANNING APPROVAL**

THIS IS THE PLAN REFERRED TO BY  
CONDITION \_\_\_\_\_

OF APPROVAL No P2958

SIGNED [Signature]

DATE 23/5/2013

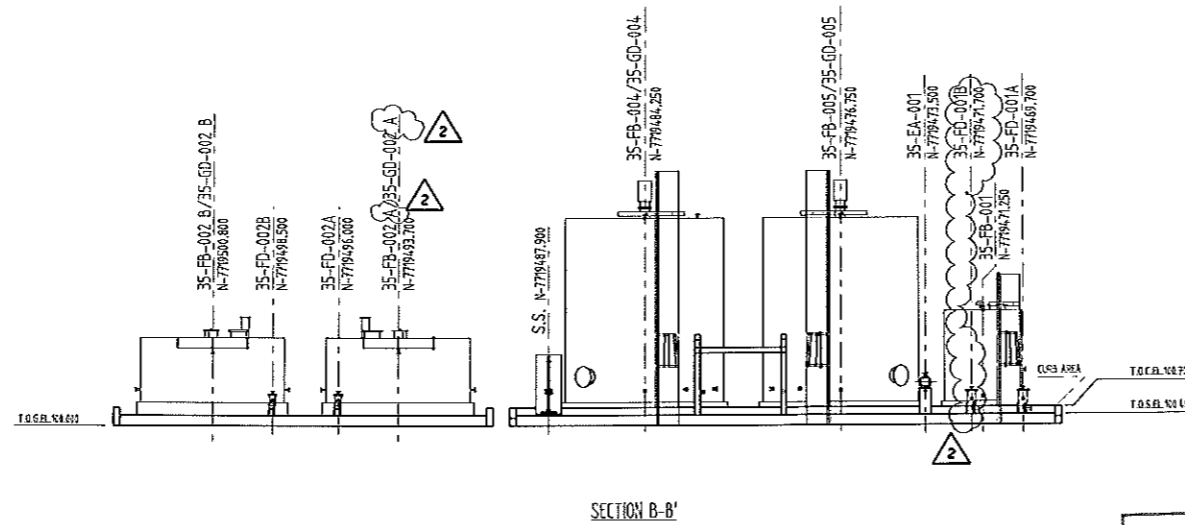
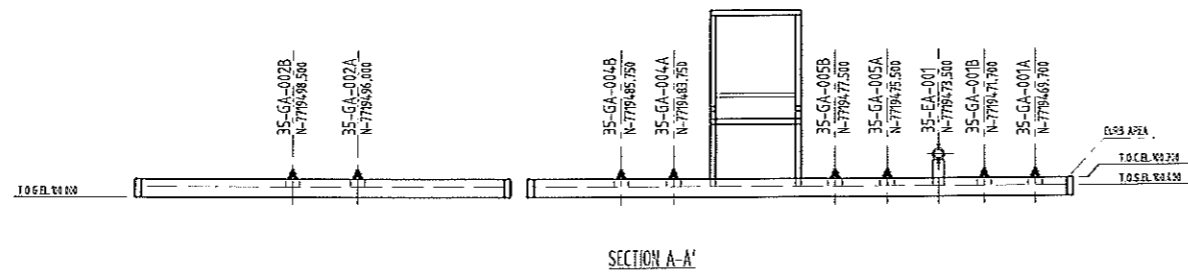
REV	DATE	DESCRIPTION	BY	CHK	APP
01	10/02/12	ISSUED FOR DESIGN	DR	RS	FB
02	12/02/12	ISSUED FOR DESIGN	DR	RS	FB
03	23/07/12	ISSUED FOR APPROVAL	DR	RS	FB
04		ISSUED FOR APPROVAL	DR	RS	FB

TAN BURRUP PROJECT

BURRUP NITRATE FACILITY  
BURRUP, WESTERN AUSTRALIA  
955 TONN TON PLANT

SCALE: 1:100  
DATE: 23/05/2013

TECHNICAL AMMONIUM NITRATE PROCESS UNIT 32  
PLOT PLAN SECTION-4 N-7719342852



EQUIPMENT LIST			REFERENCE Dwg.	
ITEM NUMBER	DESCRIPTION	ELEVATION	OVERALL PLOT PLAN B.P.P.P AND/OR NITRATE PLAN	NO.
35-EA-001	DISSOLVING WATER HEATER	EL. 103.00	2-200-323-DWG-TRE-003	
35-FB-001	DISSOLVING WATER TANK	EL. 103.50	AN SOLUTION OFF-SPEC TREATMENT UNIT PLOT PLAN	2-200-323-DWG-TRE-003
35-FB-002 A	OFF SPEC DISSOLVING TANK	EL. 103.50		
35-FB-002 B	OFF SPEC DISSOLVING TANK	EL. 103.50		
35-FB-004	DILUTED AN TANK	EL. 103.50		
35-FB-005	DILUTED AN OPS. ACC. TANK	EL. 103.50		
35-FD-001 A/B	DISSOLVING WATER FILTER	EL. 103.00		
35-FD-002A	OFF SPEC SOLUTION FILTER	EL. 103.00		
35-FD-002B	OFF SPEC SOLUTION FILTER	EL. 103.00		
35-GA-001 A	DISSOLVING WATER PUMP	EL. 111.25		
35-GA-001 B	DISSOLVING WATER PUMP	EL. 111.25		
35-GA-002 A	OFF SPEC DISSOLVING PUMP	EL. 111.25		
35-GA-002 B	OFF SPEC DISSOLVING PUMP	EL. 111.25		
35-GA-004 A	DILUTED AN PUMP	EL. 111.25		
35-GA-004 B	DILUTED AN PUMP	EL. 111.25		
35-GA-005 A	DILUTED AN PUMP	EL. 111.25		
35-GA-005 B	DILUTED AN PUMP	EL. 111.25		
35-GD-001 A	OFF SPEC DSS. TANK AGITATOR	EL. 103.00		
35-GD-001 B	OFF SPEC DSS. TANK AGITATOR	EL. 103.00		
35-GD-002 A	OFF SPEC DSS. TANK AGITATOR	EL. 103.00		
35-GD-002 B	OFF SPEC DSS. TANK AGITATOR	EL. 103.00		
35-GD-004	DILUTED AN TANK AGITATOR	EL. 103.00		
35-GD-005	DILUTED AN OPS. ACC. TANK AGITATOR	EL. 103.00		
35-G-001	OFF SPEC COPPER/LUMP CRUSHER	EL. 103.00		
35-PC-001	OFF SPEC CONVEYOR	EL. 103.00		
35-PC-004	OFF SPEC ELEVATOR	EL. 103.00		
35-PC-005	OFF SPEC CROSS CONVEYOR	EL. 103.00		

2

**NOTES**

1. ALL DIMENSIONS ARE ACCEPTED IN METERS, DIMENSION AND ELEVATION ARE IN MILLIMETERS.

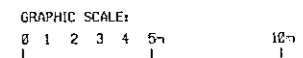
2. ELEVATIONS ARE REFERRED TO HIGHEST FINISH LINE FOR COLUMNS, REACTORS AND HEAT EXCHANGERS. CENTER LINE FOR HORIZONTAL VESSELS AND COMPRESSORS. CENTER LINE FOR VERTICAL VESSELS. CENTER LINE FOR VERTICAL SHUT DOWNERS. CENTER LINE FOR PUMPS. CENTER LINE FOR SHUT DOWNERS. CENTER LINE FOR STORAGE TANKS.

**LEGEND**

SS & ELEVATOR POWER & ELEVATOR

**SHIRE OF ROEBOURNE**  
**TOWN PLANNING APPROVAL**

THIS IS THE PLAN REFERRED TO BY  
 CONDITION \_\_\_\_\_  
 OF APPROVAL No P2958  
 SIGNED J. Hawley  
 DATE 23/5/2013



REV	DATE	DESCRIPTION	DESIGNER	CHECKED	APPROVED
1	12-12-12	APPROVED FOR DESIGN	PSA	PSA	PSA
2	27-09-12	APPROVED FOR DESIGN	PSA	PSA	PSA
3	24-02-12	ISSUED FOR APPROVAL	PSA	PSA	PSA

TAN BURRUP PROJECT

8. SUPPLY NITRATES P.L.L.T.O.  
 BURRUP PENINSULA WESTERN AUSTRALIA  
 150 MTPD TAN PLANT

DESIGNED BY: [Signature]  
 CHECKED BY: [Signature]  
 APPROVED BY: [Signature]

AN SOLUTION OFF-SPEC TREATMENT SECTIONS AND ELEVATION

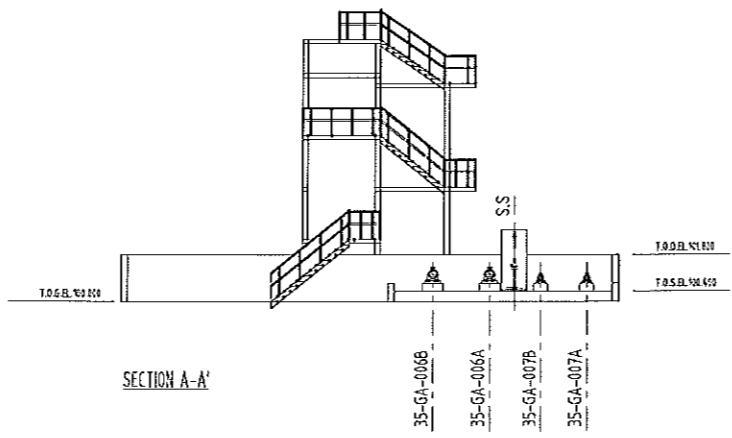
EQUIPMENT LIST			REFERENCE Dwg.	
ITEM NUMBER	DESCRIPTION	ELEVATION	OVERALL FLOOT PLAN BURRUP PROCESS NITRATE PLAN	NO.
35-EA-002	AIR SOLUTION HEATER	EL. 110.32		2-200-323-015-TPE-0025
35-FB-004	AIR SOLUTION TANK	EL. 109.92	AN SOLUTION HANDLING LAST FLOOT PLAN	2-200-323-015-TPE-0043
35-FB-007	PROCESS CONDENSATE TANK	EL. 109.92		
35-FJ-005	STATIC MIXER AIR SOLUTION PREPARATION	EL. 114.73		
35-GA-005 A	AIR SOLUTION LOADING PUMP	EL. 114.75		
35-GA-005 B	AIR SOLUTION LOADING PUMP	EL. 114.75		
35-GA-007 A	PROCESS CONDENSATE PUMP	EL. 109.95		
35-GA-007 B	PROCESS CONDENSATE PUMP	EL. 109.95		

**NOTES**

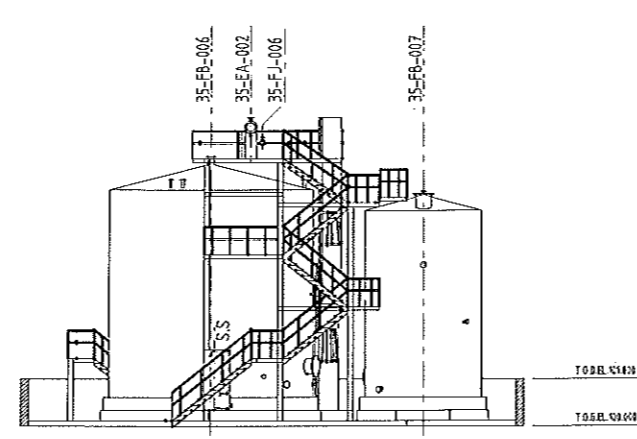
1. ALL DIMENSIONS ARE IN METERS, UNLESS OTHERWISE SPECIFIED AND ELEVATION ARE IN METERS.

2. ELEVATIONS ARE REFERRED TO:  
 - WILKES TANGENT LINE FOR LOANS  
 - REACTORS AND VERTICAL VESSELS  
 - BENTON LINE FOR HORIZONTAL VESSELS AND COMPRESSORS  
 - CENTER LINE CORNER FOR HORIZONTAL SHUT DOWNERS  
 - BOTTOM OF SUPPORT FOR VERTICAL SHUT DOWNERS  
 - CENTER LINE SECTION FOR PUMPS  
 - CENTER LINE SECTION FOR PACKS  
 - CENTER LINE SECTION FOR TANKS

3. RING WALL DESIGN ACCORDING TO AS 452-2003 TO BE REVIEWED.



SECTION A-A'



SECTION B-B'

**SHIRE OF ROEBOURNE  
TOWN PLANNING APPROVAL**

THIS IS THE PLAN REFERRED TO BY  
 CONDITION 1  
 OF APPROVAL No P2956  
 SIGNED [Signature]  
 DATE 23/5/2013

**LEGEND**

SS & EV SAFETY COVER & ELEVATION



NO.	DATE	DESCRIPTION	BY	CHKD.	APPD.
1	19-12-12	APPROVED FOR DESIGN	TRU	TRU	TRU
2	13-12-12	APPROVED FOR DESIGN	TRU	TRU	TRU
3	27-12-12	APPROVED FOR DESIGN	TRU	TRU	TRU
4	24-01-13	ISSUED FOR APPROVAL	TRU	TRU	TRU

TAN BURRUP PROJECT  
 BURRUP NITRATES PTY LTD.  
 BURRUP, WESTONIA, WESTERN AUSTRALIA  
 353 MFD TAN PLANT

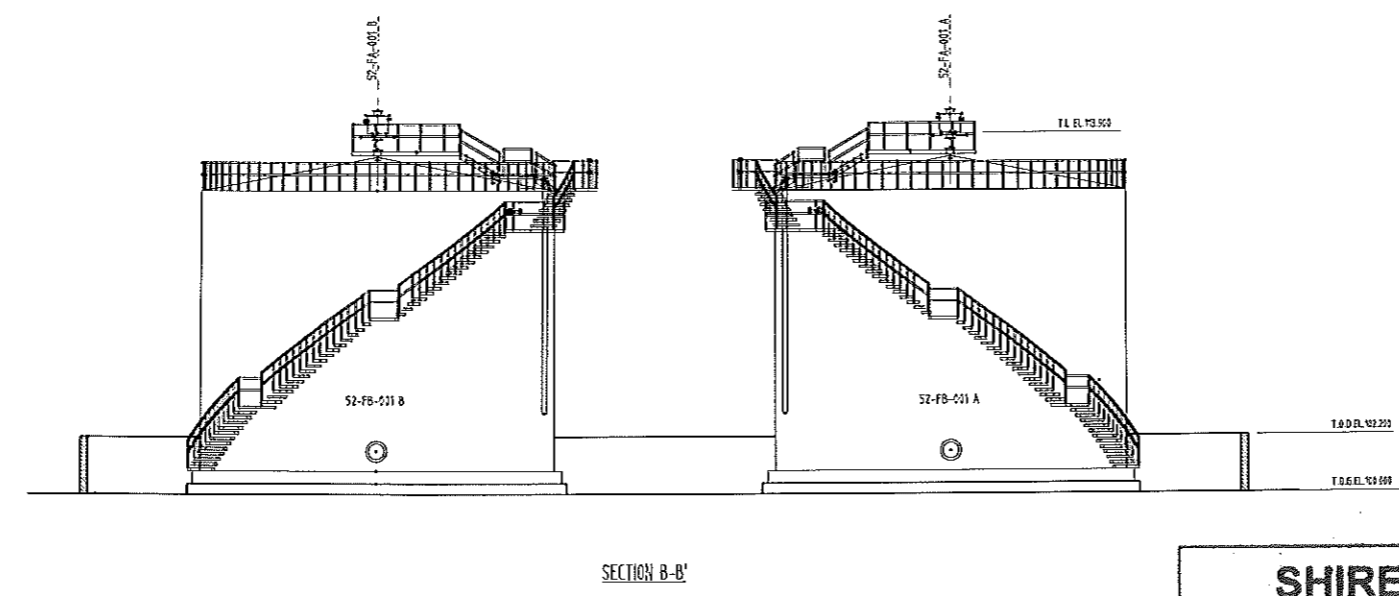
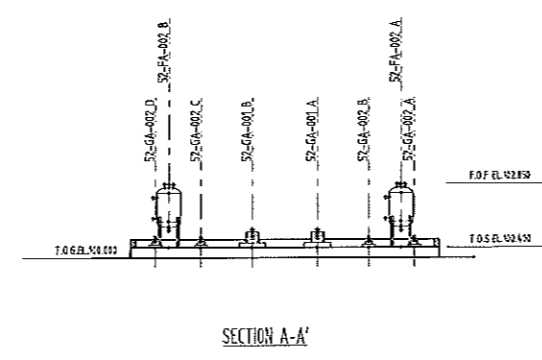
AN SOLUTION HANDLING  
SECTIONS AND ELEVATION



EQUIPMENT LIST			REFERENCE Dwg.	IC
ITEM NUMBER	DESCRIPTION	ELEVATION	OVERALL PLOT PLAN BURRUP AND OASIS NITRATE PLAN	2-200-203-DWG-TRE-0526
S2-FA-012A	VENT SEALING VESSEL	EL. 110.500	PLOT PLAN NITRIC ACID STORAGE UNIT 52	2-200-203-DWG-TRE-0667
S2-FA-012B	VENT SEALING VESSEL	EL. 110.500		
S2-FA-012A	VENT WASHING VESSEL	EL. 110.450		
S2-FA-012B	VENT WASHING VESSEL	EL. 110.450		
S2-FB-012A	NITRIC ACID STORAGE TANK	EL. 109.550		
S2-FB-012B	NITRIC ACID STORAGE TANK	EL. 109.550		
S2-GA-012A	NITRIC ACID PUMP	EL. 109.830		
S2-GA-012B	NITRIC ACID PUMP	EL. 109.830		
S2-GA-021A	VENT WASHING ACID PUMP	EL. 109.640		
S2-GA-021B	VENT WASHING ACID PUMP	EL. 109.640		
S2-GA-021C	VENT WASHING ACID PUMP	EL. 109.640		
S2-GA-021D	VENT WASHING ACID PUMP	EL. 109.640		
S2-GA-021E	VENT WASHING ACID PUMP	EL. 109.640		

**NOTES**

1. ALL DIMENSIONS ARE INDICATED IN METERS, EXCEPT AS NOTED OTHERWISE.
2. DIMENSIONS ARE REFERRED TO:
  - CENTER LINE FOR VESSELS
  - CENTER LINE FOR VERTICAL VESSELS
  - CENTER LINE FOR HORIZONTAL VESSELS AND COMPRESSORS
  - CENTER LINE FOR VERTICAL SHUT DOWNERS
  - CENTER LINE FOR PUMPS
  - FACE FOR SHEET PILE PILING
  - FACE FOR STRUCTURE
3. ROAD WALL DESIGN ACCORDING TO AS 4320-2003 TO BE REVIEWED.



**SHIRE OF ROEBOURNE  
TOWN PLANNING APPROVAL**

THIS IS THE PLAN REFERRED TO BY  
CONDITION 1  
OF APPROVAL No P2958  
SIGNED J. Henley  
DATE 23/5/2013

GRAPHIC SCALE: 0 1 2 3 4 5m 10m

REV	DATE	DESCRIPTION	BY	CHK	APPV
01	11-09-12	APPROVED FOR DESIGN	TFJ	PSA	FB
02	11-09-12	APPROVED FOR DESIGN	TFJ	PSA	FB
03	02-02-13	ISSUED FOR APPROVAL	TFJ	PSA	FB

TAN BURRUP PROJECT  
 BURRUP NITRATES PTY LTD  
 BURRUP PENINSULA, WESTERN AUSTRALIA  
 95 MITO TAN PLANT

YARA TAN BURRUP  
ELEVATION SECTIONS  
NITRIC ACID STORAGE UNIT 52

EQUIPMENT LIST		
ITEM NUMBER	DESCRIPTION	ELEVATION
87-CE-001	METASULPHITE DOSING PACKAGE	EL. 103.410
87-CE-002	ELECTRO-OXIDATION PACKAGE	EL. 103.410
87-EF-001 A	COOLING TOWER	EL. 103.410
87-EF-001 B	COOLING TOWER	EL. 103.410
87-EF-001 C	COOLING TOWER	EL. 103.410
87-EF-002	SEAWATER BLOWDOWN COOLING TOWER	EL. 103.410
87-GA-001 A	COOLING TOWER PUMP	EL. 101.300
87-GA-001 B	COOLING TOWER PUMP	EL. 101.300
87-GA-001 C	COOLING TOWER PUMP	EL. 101.300
87-GA-002 A	SEAWATER BLOWDOWN PUMP	EL. 101.100
87-GA-002 B	SEAWATER BLOWDOWN PUMP	EL. 101.100

REFERENCE Dwg.		NO.
CORPALL PLOT PLAN BURRUP ANODUM NITRATE PLANT		2-322-321-CVS-FRE-0005
COOLING TOWER UNIT PLOT PLAN		2-322-321-CVS-FRE-0017

**NOTES**

1. ALL DIMENSIONS ARE INCORPORATED IN METERS, DIMENSION AND ELEVATION ARE IN MILLIMETERS.

2. ELEVATIONS ARE REFERRED TO MLLWS (MEAN LOW WATER SURFACE).

3. REACTORS AND VERTICAL RESERVOIRS ARE VERTICAL.

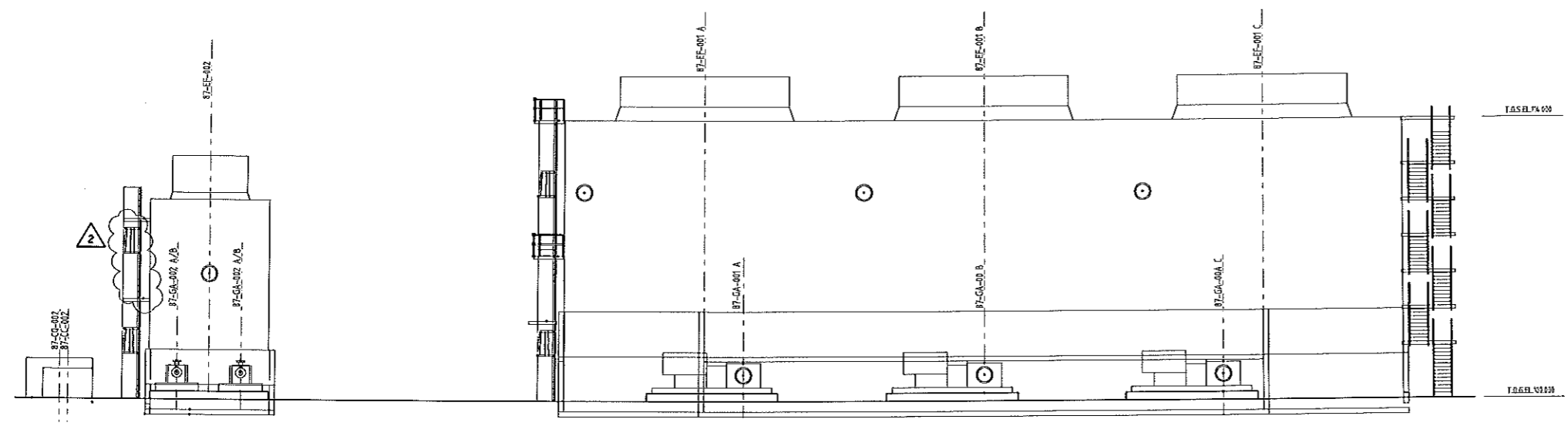
4. CENTER LINE FOR VERTICAL VESSELS AND COMPRESSORS.

5. CENTER LINE DIMENSION FOR HORIZONTAL VERTICAL EXCHANGERS.

6. CENTER LINE SECTION FOR PIPES.

7. FITTING FOR 90° ELBOWED PACKAGE.

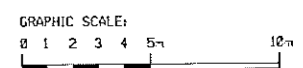
8. DIMENSIONS FOR STORAGE TANKS.



SECTION A-A'

**SHIRE OF ROEBOURNE  
TOWN PLANNING APPROVAL**

THIS IS THE PLAN REFERRED TO BY  
CONDITION 1  
OF APPROVAL No P2258  
SIGNED [Signature]  
DATE 23/5/2013



REV	DATE	DESCRIPTION	DESIGNER	CHECKED	APPROVED
1	15-12-12	APPROVED FOR DESIGN	PSJ	PSJ	PSJ
2	22-07-12	APPROVED FOR DESIGN	PSJ	PSJ	PSJ
3	24-07-12	ISSUED FOR APPROVAL	PSJ	PSJ	PSJ

TAN BURRUP PROJECT

BURRUP METALS PTY. LTD.  
BURRUP PENINSULA WESTERN AUSTRALIA  
100 BURRUP TOWN PLANT

DATE: 15/12/12  
DWG NO: 2-322-321-CVS-FRE-0017  
REV: 1  
FILE NO: 1

COOLING TOWER  
SECTION AND ELEVATION



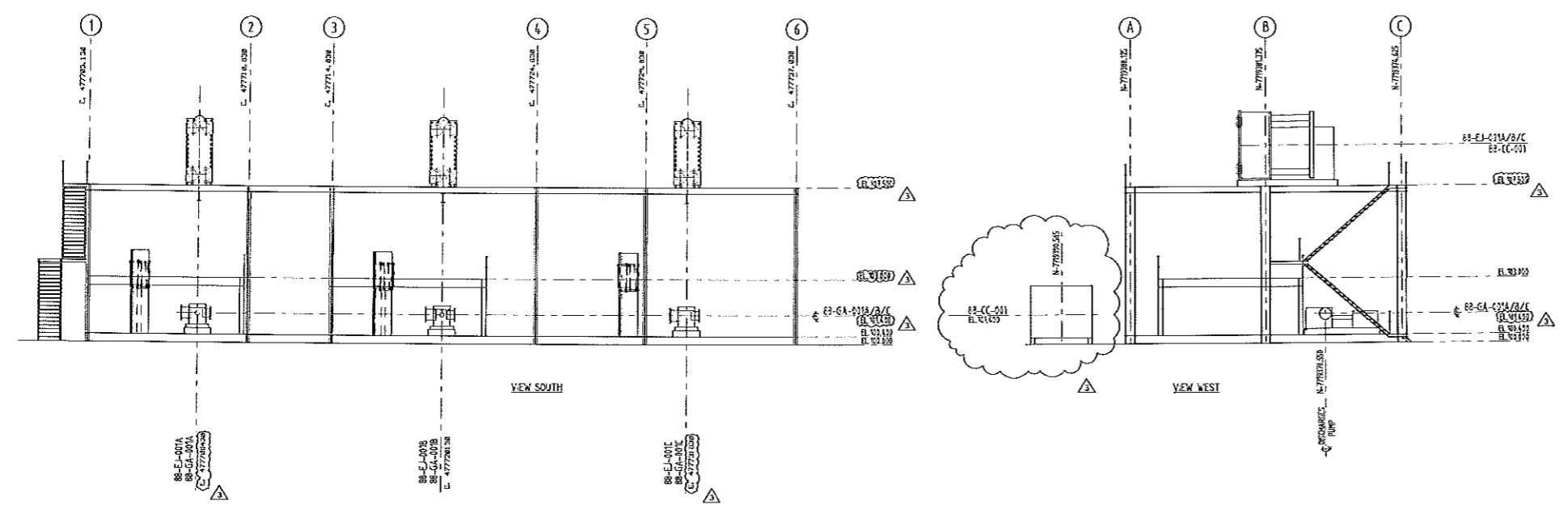
EQUIPMENT LIST		
ITEM NUMBER	DESCRIPTION	ELEVATION
ES-CC-001	CLOSED COOLING WATER TREATMENT PACKAGE	EL. 153.810
ES-EJ-001A/B/C	SEA WATER PLATE EXCHANGERS	EL. 153.455
ES-GA-001A/B/C	COOLING WATER PUMPS	EL. 153.455

REFERENCE Dwg.		NO.
OVERALL PLOT PLAN BURRUP ANOMOL NITRATE PLANT		2-200-329-ENG-TPE-0525
CLOSED COOLING WATER SECTION AND ELEVATION		2-200-329-ENG-TPE-0524

PLOT PLAN

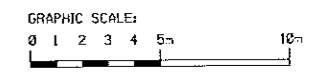
NOTES

1. ALL COORDINATES ARE INDICATED IN METERS, EMISSION AND ELEVATION ARE IN MILLIMETERS.  
 2. DIMENSIONS ARE REFERRED TO:  
 A. LINES/TANGENT LINE FOR COLUMNS  
 B. CENTER LINE FOR VERTICAL VESSELS  
 C. CENTER LINE FOR HORIZONTAL VESSELS/SHAFT COMPRESSORS  
 D. CENTER LINE ORIGIN FOR HORIZONTAL SBT EQUIPMENTS  
 E. BOTTOM OF SUPPORT FOR VERTICAL SBT EQUIPMENTS  
 F. FACE FOR PUMPS AND SBT MOUNTED FACILITIES  
 G. FACE FOR STORAGE TANKS



**SHIRE OF ROEBOURNE  
TOWN PLANNING APPROVAL**

THIS IS THE PLAN REFERRED TO  
CONDITION 1  
OF APPROVAL No P2958  
SIGNED [Signature]  
DATE 23/5/2013



NO.	DATE	DESCRIPTION	DESIGNER	CHECKED	APPROVED
1	18/03/12	APPROVED FOR DESIGN	KYAU	JINNA	HTG
2	18/03/12	APPROVED FOR DESIGN	DF	JIN	HT
3	18/03/12	APPROVED FOR DESIGN	DF	PS	HT
4	18/03/12	ISSUED FOR APPROVAL	DF	PS	HT

TAN BURRUP PROJECT

150A FULBRIA NITRATES PTY LTD  
BURRUP PENINSULA WESTERN AUSTRALIA  
825 MTIO TAN PLANT

SCALE: 1:500  
DATE: 2-200-329-ENG-TPE-0524  
SHEET NO: 10 of 10  
DRAWN BY: [Name]  
CHECKED BY: [Name]  
APPROVED BY: [Name]

CLOSED COOLING WATER SECTION AND ELEVATION

EQUIPMENT LIST		
ITEM NUMBER	DESCRIPTION	ELEVATION
93-CA-001	JOCKEY PUMPS	EL. 103.650
93-CA-002A/B	FIRE WATER PUMP	EL. 103.650
93-CA-003	SAFETY SHOWER PACKAGE	100.0
93-FB-001A/B	DESALINATED WATER STORAGE TANKS	EL. 103.300
93-FB-002	CONDENSATE WATER STORAGE TANKS	EL. 103.300
93-FB-003	FOUL-WATER CONCENTRATE STORAGE TANK	EL. 103.300
93-CA-004A/B	DESALINATED WATER SUPPLY PUMPS	EL. 103.650
93-CA-005A/B	HP CONDENSATE WATER PUMPS	EL. 103.650
93-CA-006A/B	LP CONDENSATE WATER PUMPS	EL. 103.650
93-CA-007A/B	FOUL-WATER CONCENTRATE STORAGE TANK	EL. 103.650

REFERENCE DRS.		NO.
ANNOXIM NITRATE PLAN OVERALL PLOT PLAN	2-200-201-010-110-1000	
91, 92 & 93 UNIT PLOT PLAN	2-200-201-010-110-1001	

**NOTES**

1. ALL COORDINATES ARE INDICATED IN METERS, DIMENSION AND ELEVATION ARE IN MILLIMETERS.

2. ELEVATIONS ARE REFERRED TO:

A. HIGHEST FINISH LINE FOR COLUMNS

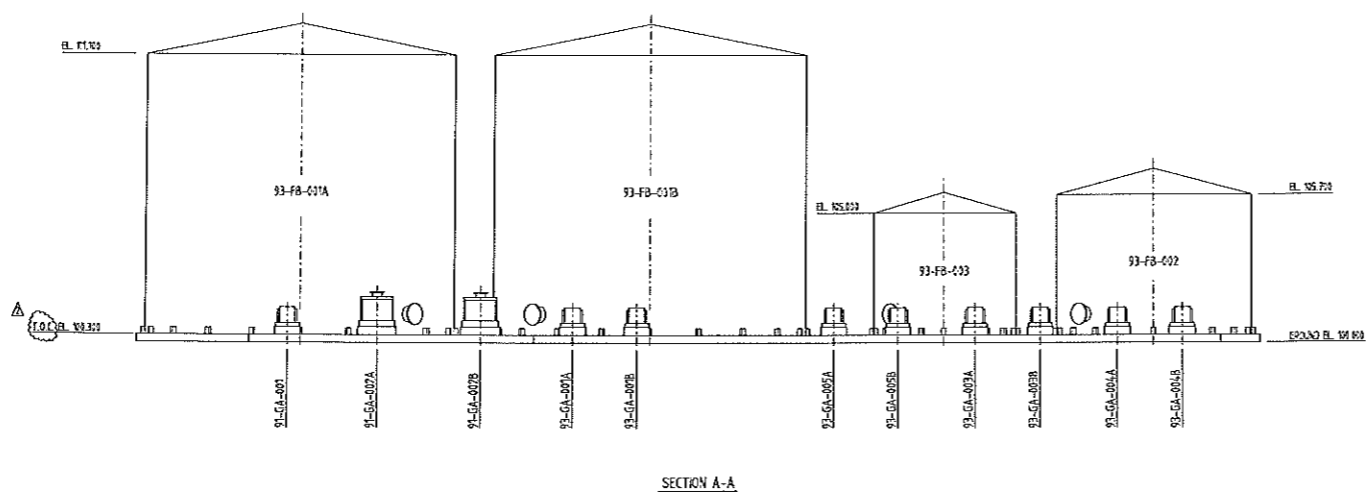
B. REACTORS AND VERTICAL VESSELS

C. CENTER LINE FOR HORIZONTAL VESSELS AND COMPRESSORS

D. CENTER LINE PANEL FOR VERTICAL SHT EXCHANGERS

E. TIE-INS FOR PUMPS AND SIZED HEATED TANKS

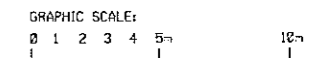
F. TIE-INS FOR STORAGE TANKS



SECTION A-A

**SHIRE OF ROEBOURNE  
TOWN PLANNING APPROVAL**

THIS IS THE PLAN REFERRED TO IN  
CONDITION 1  
OF APPROVAL No P2258  
SIGNED [Signature]  
DATE 23/5/2013



NO.	DATE	DESCRIPTION	APP.	CHK.	APP.
1		APPROVED FOR DESIGN	CT	PS	FB
2		APPROVED FOR DESIGN	CT	PS	FB
3		ISSUE FOR APPROVAL	CT	PS	FB

TAN BURRUP PROJECT

BURRUP NITRATES PTY. LTD.  
BURRUP PENINSULA, WESTERN AUSTRALIA  
525 MIDO TAY PLAN

91, 92 & 93 UNIT  
SECTION AND ELEVATIONS